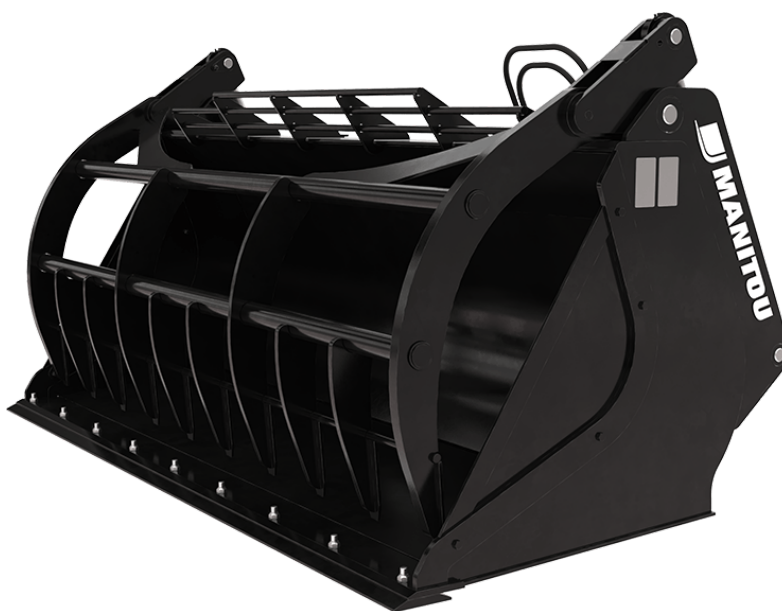


Technical sheet :

ENVIRONMENT GRAB BUCKET







Customer benefits

- Allows a massive work output in waste handling.
- Ideal attachment for the handling of bulk materials (paper, crushed green waste, etc.).
- Perfect for work on concrete, asphalt etc.
- Reinforced bucket for intensive waste applications.





Technical characteristics

- Strong welded teeth.
- Handling bulk materials with a density ≤ 1000 kg/m³.
- 500 HB bolted cutting edge.
- Additional welded plate on grab's teeth (WB: Welded Blade reference).
- Additional cutting blade, for paper applications, on grab's teeth (WBP: Welded Blade Paper reference).

[The 3D picture at the top of this page is the reference CBG 2450 / 1600 EN - 52000563].

| Technical characteristics | | CBG 2450 / 1600 EN | CBG 2450 / 1600 EN WB | CBG 2480 / 2200 EN | CBG 2480 / 2200 EN WBP |
|------------------------------------|-----|---|---|---|---|
| Distance to center of gravity (mm) | | - | 609 | 652 | 652 |
| Capacities | | | | | |
| Capacity (kg) | | 1568 | 1568 | 2200 | 2200 |
| Heaped capacity (l) | | 1568 | 1568 | 2200 | 2200 |
| Struck capacity (l) | | 1262 | 1262 | 1500 | 1500 |
| Weight | | | | | |
| Overall weight (kg) | | 926 | 947 | 1300 | 1340 |
| Weight and dimensions | | | | | |
| Overall length (mm) | l1 | 1259 | 1259 | 1545 | 1545 |
| Width (mm) | | 2450 | 2450 | 2480 | 2480 |
| Opened grab height (mm) | h34 | 1868 | 1868 | 2390 | 2390 |
| Working Parameters | | | | | |
| Machine Equipment | |  |  |  |  |
| Teeth | | 10 | 10 | 5 | 5 |
| Other Data for Attachments | | | | | |
| Bolted wearplate (LDR) | | Standard | Standard | Standard | Standard |
| Wear plate hardness | | 500 | 500 | 500 | 500 |

| Machines compatibility | CBG 2450 / 1600 EN | CBG 2450 / 1600 EN WB | CBG 2480 / 2200 EN | CBG 2480 / 2200 EN WBP |
|--------------------------------|--------------------|-----------------------|--------------------|------------------------|
| Reference number | 52000563 | 52000766 | 790657 | 52704532 |
| ALT950 | X | - | - | - |
| MHT 790 Mining ST5 | - | - | X | - |
| MHT 790 ST5 | - | - | X | - |
| MHT-X 790 ST3A | - | - | X | - |
| MLA-T 533-145 V+ - ST5 | X | - | - | - |
| MLT 635-130 PS+ | X | X | - | - |
| MLT 635-140 V+ | X | X | - | - |
| MLT 733-115 LSU | X | X | - | - |
| MLT 737-130 PS+ | X | X | - | - |
| MLT 741-130 PS+ | X | X | - | - |
| MLT 741-140 V+ | X | X | - | - |
| MLT 841-145 PS+ | X | X | - | - |
| MLT 850-145 V+ | X | - | X | X |
| MLT 940-140 V+ | X | X | - | - |
| MLT 961-160 V+ L | - | - | X | X |
| MLT 1041-145 PS+L | X | X | - | - |
| MLFX 737-130 PS+ | X | X | - | - |
| MLFX 741 T LSU | X | - | - | - |
| MLFX 841 - 145 PS+ | X | X | - | - |
| MLFX 850-145 V+ | X | - | X | X |
| MLFX 961-160 V+ L | - | - | X | X |
| MLFX 1041-145 PS+L | X | X | - | - |
| MHT 790 OLD | - | - | - | X |
| MHT-X 790 OLD | - | - | X | X |
| MHT-X 790 Mining OLD | - | - | X | - |
| MLT 635-130 PS+ ST4 OLD | X | X | - | - |
| MLT 635-140 V+ ST4 OLD | X | - | - | - |
| MLT 733-115 OLD | X | X | - | - |
| MLT 733-115 LSU ST4 OLD | X | X | - | - |
| MLT 733-115 ST4 OLD | X | X | - | - |
| MLT 737-130 PS+ ST4 OLD | X | X | - | - |
| MLT 741-140 V+ ST4 OLD | X | X | - | - |
| MLT 840-145 PS+ OLD | X | - | - | - |
| MLT 845-100 H OLD | - | X | - | - |
| MLT 845-120 OLD | - | X | - | - |
| MLT 961-145 V+ L OLD | - | - | X | - |
| MLFX 737-130 PS+ OLD | X | X | - | - |
| MLFX 741-140 V+ S1 OLD | X | X | - | - |
| MLFX 840-140 PS+ OLD | X | - | - | - |
| MLFX 845-120 OLD | X | X | - | - |
| MLFX 845-120 H OLD | X | X | - | - |
| MLFX 961-145 V+ L OLD | - | - | X | - |

| TABLE SYMBOL | | | | | |
|---|----------------------------|---|-------------------------|---|---|
|  | No predisposition required |  | Hydraulic line |  | Return piping to hydraulic oil tank |
|  | Electric predisposition |  | Platform predisposition |  | Tyre handler, cylinder handler predisposition |



Head Office

B.P. 249 - 430 rue de l'Aubinière

44150 Ancenis Cedex - France

Tel: +33 (0)2 40 09 10 11 - Fax: +33 (0)2 40 09 10 97

www.manitou.com



This publication provides a description of the configuration versions and options for Manitou products, which may differ for equipment. The equipment presented in this brochure may be part of a series, as an option, or it may not be available, depending on the versions. Manitou reserves the right, at any time and without notice, to amend the specifications described and represented. The specifications provided do not bind the manufacturer. For more details, please contact your Manitou agent. This is not a contractually binding document. The presentation of the products is not contractually binding. List of specifications non-exhaustive. The logos as well as the visual identity of the company are owned by Manitou and cannot be used without authorisation. All rights reserved. The photos and diagrams contained in this brochure are only provided for consultation and information purposes.

MANITOU BF SA - Limited company with board of directors - Share capital: 39,668,399 euros - 857 802 508 RCS Nantes