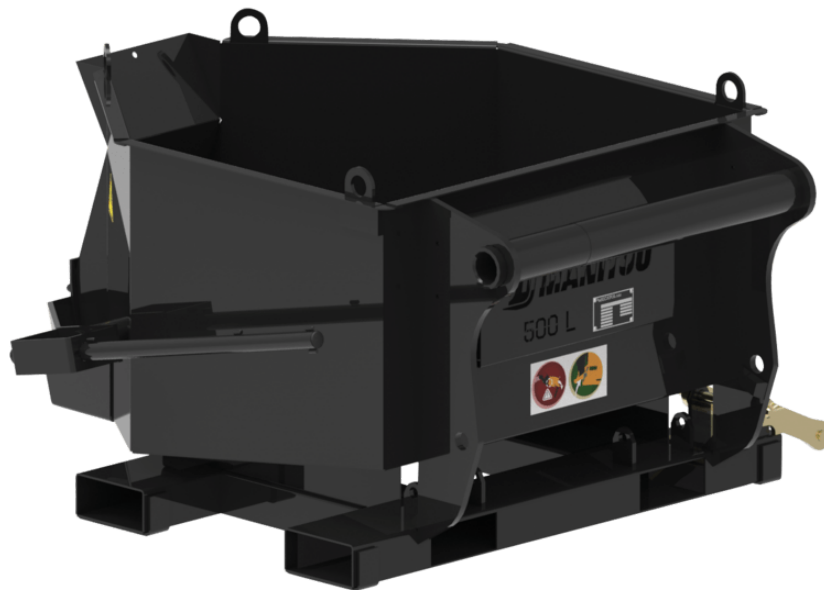


Technical sheet :

CONCRETE SKIP



Customer benefits

- Skip adapted to the needs of construction professionals.
- Compact attachment allowing work in window openings.
- Multi-purpose, for concrete and mortar.
- Optional: hydraulic opening for a controlled unloading ("H").
- Optional: flexible tube ("G") (1m, \varnothing 200 mm) for excellent accuracy.







Technical characteristics

- 500 L capacity.
- Carriage mounted (front position) or fork mounted (front and side unloading).
- Fork sleeves: 170 x 75mm.
- Safety: attachment equipped with a fork lock system.
- Well-protected components.
- BBHG 500 MRT: equipped with a counterbalance valve.

| Technical characteristics | | BB 500 | BB 500 MRT | BBG 500 | BBH 500 | BBHG 500 | BBHG 500 MRT |
|------------------------------------|-----|--------|------------|---------|-----------|-----------|--------------|
| Distance to center of gravity (mm) | | 556 | 555 | 598 | 578 | 618 | 621 |
| Capacities | | | | | | | |
| Capacity (kg) | | 1200 | 1200 | 1200 | 1200 | 1200 | 1200 |
| Heaped capacity (l) | | 500 | 500 | 500 | 500 | 500 | 500 |
| Weight | | | | | | | |
| Overall weight (kg) | | 191 | 191 | 201 | 200 | 210 | 211 |
| Weight and dimensions | | | | | | | |
| Overall height (mm) | h17 | 776 | 776 | 776 | 776 | 776 | 776 |
| Overall length (mm) | l1 | 1466 | 1466 | 1466 | 1466 | 1466 | 1466 |
| Width (mm) | | 1216 | 1216 | 1220 | 1110 | 1110 | 1110 |
| Working Parameters | | | | | | | |
| Machine Equipment | | | | | | | |
| Opening | | Manual | Manual | Manual | Hydraulic | Hydraulic | Hydraulic |
| Flexible tube | | No | No | Yes | No | Yes | Yes |

| Machines compatibility | BB 500 | BB 500 MRT | BBG 500 | BBH 500 | BBHG 500 | BBHG 500 MRT |
|-------------------------------------|----------|------------|----------|----------|----------|--------------|
| Reference number | 52000637 | - | 52000639 | 52000638 | 52000640 | - |
| MT 420 H | X | - | - | X | - | - |
| MT 625 H | X | - | X | X | X | - |
| MT 625 H Comfort | X | - | X | X | X | - |
| MT 625 HA | X | - | X | X | X | - |
| MT 730 H | X | - | X | X | X | - |
| MT 735 75D ST5 | X | - | X | X | X | - |
| MT 930 H | X | - | X | X | X | - |
| MT 930 HA | X | - | X | X | X | - |
| MT 935 75D ST5 | X | - | X | X | X | - |
| MT 1135 75 D | X | - | X | X | X | - |
| MT 1135 H 100D | X | - | X | X | X | - |
| MT 1335 75D ST5 | X | - | X | X | X | - |
| MT 1335 100D ST5 | X | - | X | X | X | - |
| MT 1335 H 75D ST5 | X | - | X | X | X | - |
| MT 1335 H 100D ST5 | X | - | X | X | X | - |
| MT-X 1440 | X | - | X | X | X | - |
| MT-X 1440 A | X | - | X | X | X | - |
| MT-X 1840 | X | - | X | X | X | - |
| MT-X 1840 A | X | - | X | X | X | - |
| MXT 840 K | X | - | - | - | - | - |
| MXT 840 P | X | - | - | - | - | - |
| MXT 1740 K | X | - | - | - | - | - |
| MXT 1740 P | X | - | - | - | - | - |
| MT 733 Easy OLD | X | - | X | X | X | - |
| MT 933 Easy OLD | X | - | - | - | X | - |
| MT 1033 easy OLD | X | - | X | X | X | - |
| MT 1135 OLD | X | - | X | X | X | - |
| MT 1135 H easy ST5 OLD | X | - | X | X | X | - |
| MT 1135 ST5 OLD | X | - | X | X | X | - |
| MT 1335 OLD | X | - | X | X | X | - |
| MT 1335 ST5 OLD | X | - | X | X | X | - |
| MT 1440 OLD | X | - | X | X | X | - |
| MT 1440 A OLD | X | - | X | X | X | - |
| MT 1440 HA OLD | X | - | X | X | X | - |
| MT 1840 OLD | X | - | X | X | X | - |
| MT 1840 A OLD | X | - | X | X | X | - |
| MT 1840 HA OLD | X | - | X | X | X | - |
| Reference number E-RECO | - | 52000642 | - | - | - | 52000643 |
| MRT 1645 75 | - | X | - | - | - | X |
| MRT 1645 115 | - | X | - | - | - | X |
| MRT 1845 75 | - | X | - | - | - | X |
| MRT 1845 115 | - | X | - | - | - | X |
| MRT 2145 115 | - | X | - | - | - | X |
| MRT 2260 | - | X | - | - | - | X |
| MRT 2260 e | - | X | - | - | - | X |
| MRT 2545 115 | - | X | - | - | - | X |
| MRT 2570 | - | X | - | - | - | X |
| MRT 2660 | - | X | - | - | - | X |
| MRT 2660 e | - | X | - | - | - | X |
| MRT 3060 | - | X | - | - | - | X |
| MRT 3570 | - | X | - | - | - | X |
| MRT 3570 ES | - | X | - | - | - | X |
| MRT-X 1645 | - | X | - | - | - | X |
| MRT-X 1845 | - | X | - | - | - | X |
| MRT-X 2145 | - | X | - | - | - | X |
| MRT-X 2260 | - | X | - | - | - | X |
| MRT-X 2545 | - | X | - | - | - | X |
| MRT-X 2570 | - | X | - | - | - | X |
| MRT-X 2660 | - | X | - | - | - | X |
| MRT-X 3060 | - | X | - | - | - | X |
| MRT-X 3570 | - | X | - | - | - | X |
| MRT-X 3570 ES | - | X | - | - | - | X |

| Machines compatibility | BB 500 | BB 500 MRT | BBG 500 | BBH 500 | BBHG 500 | BBHG 500 MRT |
|--------------------------------------|--------|------------|---------|---------|----------|--------------|
| MRT 1640 Easy T4 S2 360° OLD | - | X | - | - | - | X |
| MRT 1840 Easy T4 S2 360° OLD | - | X | - | - | - | X |
| MRT 1840 Easy T4 S2 400° OLD | - | X | - | - | - | X |
| MRT 2145 Easy T4 S2 360° OLD | - | X | - | - | - | X |
| MRT 2145 Easy T4 S2 400° OLD | - | X | - | - | - | X |
| MRT 2150 Privilege Plus OLD | - | X | - | - | - | X |
| MRT 2470 Privilege Plus OLD | - | X | - | - | - | X |
| MRT 2545 Easy T4 S2 360° OLD | - | X | - | - | - | X |
| MRT 2545 Easy T4 S2 400° OLD | - | X | - | - | - | X |
| MRT 2550 Privilege Plus OLD | - | X | - | - | - | X |
| MRT 3050 Privilege Plus OLD | - | X | - | - | - | X |
| MRT-X 1840 Easy 360° OLD | - | X | - | - | - | X |
| MRT-X 1840 Easy 400° OLD | - | X | - | - | - | X |
| MRT-X 2150 Privilege Plus OLD | - | X | - | - | - | X |
| MRT-X 2470 Privilege Plus OLD | - | X | - | - | - | X |
| MRT-X 2545 Easy 360° OLD | - | X | - | - | - | X |
| MRT-X 2545 Easy 400° OLD | - | X | - | - | - | X |
| MRT-X 2550 Privilege Plus OLD | - | X | - | - | - | X |
| MRT-X 3050 Privilege Plus OLD | - | X | - | - | - | X |

| TABLE SYMBOL | | | | | |
|---|----------------------------|---|-------------------------|---|---|
|  | No predisposition required |  | Hydraulic line |  | Return piping to hydraulic oil tank |
|  | Electric predisposition |  | Platform predisposition |  | Tyre handler, cylinder handler predisposition |



Head Office

B.P. 249 - 430 rue de l'Aubinière

44150 Ancenis Cedex - France

Tel: +33 (0)2 40 09 10 11 - Fax: +33 (0)2 40 09 10 97

www.manitou.com



This publication provides a description of the configuration versions and options for Manitou products, which may differ for equipment. The equipment presented in this brochure may be part of a series, as an option, or it may not be available, depending on the versions. Manitou reserves the right, at any time and without notice, to amend the specifications described and represented. The specifications provided do not bind the manufacturer. For more details, please contact your Manitou agent. This is not a contractually binding document. The presentation of the products is not contractually binding. List of specifications non-exhaustive. The logos as well as the visual identity of the company are owned by Manitou and cannot be used without authorisation. All rights reserved. The photos and diagrams contained in this brochure are only provided for consultation and information purposes.

MANITOU BF SA - Limited company with board of directors - Share capital: 39,668,399 euros - 857 802 508 RCS Nantes