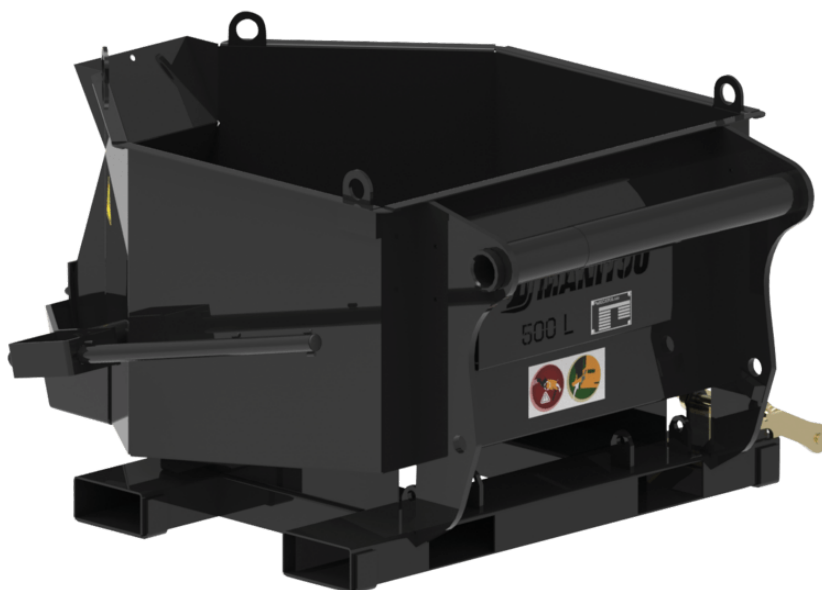


Fiche technique :

CONCRETE SKIP



Customer benefits

- Skip adapted to the needs of construction professionals.
- Compact attachment allowing work in window openings.
- Multi-purpose, for concrete and mortar.
- Optional: hydraulic opening for a controlled unloading ("H").
- Optional: flexible tube ("G") (1m, \varnothing 200 mm) for excellent accuracy.







Technical characteristics

- 500 L capacity.
- Carriage mounted (front position) or fork mounted (front and side unloading).
- Fork sleeves: 170 x 75mm.
- Safety: attachment equipped with a fork lock system.
- Well-protected components.
- BBHG 500 MRT: equipped with a counterbalance valve.

| Technical characteristics | | BB 500 | BB 500 MRT | BBG 500 | BBH 500 | BBHG 500 | BBHG 500 MRT |
|------------------------------------|-----|--------|------------|---------|-----------|-----------|--------------|
| Distance to center of gravity (mm) | | 556 | 555 | 598 | 578 | 618 | 621 |
| Capacities | | | | | | | |
| Capacity (kg) | | 1200 | 1200 | 1200 | 1200 | 1200 | 1200 |
| Heaped capacity (l) | | 500 | 500 | 500 | 500 | 500 | 500 |
| Weight | | | | | | | |
| Overall weight (kg) | | 191 | 191 | 201 | 200 | 210 | 211 |
| Weight and dimensions | | | | | | | |
| Overall height (mm) | h17 | 776 | 776 | 776 | 776 | 776 | 776 |
| Overall length (mm) | l1 | 1466 | 1466 | 1466 | 1466 | 1466 | 1466 |
| Width (mm) | | 1216 | 1216 | 1220 | 1110 | 1110 | 1110 |
| Working Parameters | | | | | | | |
| Machine Equipment | | | | | | | |
| Opening | | Manual | Manual | Manual | Hydraulic | Hydraulic | Hydraulic |
| Flexible tube | | Non | Non | Oui | Non | Oui | Oui |

| Compatibilité machine | BB 500 | BB 500 MRT | BBG 500 | BBH 500 | BBHG 500 | BBHG 500 MRT |
|-------------------------------------|----------|------------|----------|----------|----------|--------------|
| Reference number | 52000637 | - | 52000639 | 52000638 | 52000640 | - |
| MT 420 H | X | - | - | X | - | - |
| MT 625 H | X | - | X | X | X | - |
| MT 625 H Comfort | X | - | X | X | X | - |
| MT 625 HA | X | - | X | X | X | - |
| MT 730 H | X | - | X | X | X | - |
| MT 735 75D ST5 | X | - | X | X | X | - |
| MT 930 H | X | - | X | X | X | - |
| MT 930 HA | X | - | X | X | X | - |
| MT 935 75D ST5 | X | - | X | X | X | - |
| MT 1135 75 D | X | - | X | X | X | - |
| MT 1135 H 100D | X | - | X | X | X | - |
| MT 1335 75D ST5 | X | - | X | X | X | - |
| MT 1335 100D ST5 | X | - | X | X | X | - |
| MT 1335 H 75D ST5 | X | - | X | X | X | - |
| MT 1335 H 100D ST5 | X | - | X | X | X | - |
| MT-X 1440 | X | - | X | X | X | - |
| MT-X 1440 A | X | - | X | X | X | - |
| MT-X 1840 | X | - | X | X | X | - |
| MT-X 1840 A | X | - | X | X | X | - |
| MXT 840 K | X | - | - | - | - | - |
| MXT 840 P | X | - | - | - | - | - |
| MXT 1740 K | X | - | - | - | - | - |
| MXT 1740 P | X | - | - | - | - | - |
| MT 733 Easy OLD | X | - | X | X | X | - |
| MT 933 Easy OLD | X | - | - | - | X | - |
| MT 1033 easy OLD | X | - | X | X | X | - |
| MT 1135 OLD | X | - | X | X | X | - |
| MT 1135 H easy ST5 OLD | X | - | X | X | X | - |
| MT 1135 ST5 OLD | X | - | X | X | X | - |
| MT 1335 OLD | X | - | X | X | X | - |
| MT 1335 ST5 OLD | X | - | X | X | X | - |
| MT 1440 OLD | X | - | X | X | X | - |
| MT 1440 A OLD | X | - | X | X | X | - |
| MT 1440 HA OLD | X | - | X | X | X | - |
| MT 1840 OLD | X | - | X | X | X | - |
| MT 1840 A OLD | X | - | X | X | X | - |
| MT 1840 HA OLD | X | - | X | X | X | - |
| Reference number E-RECO | - | 52000642 | - | - | - | 52000643 |
| MRT 1645 75 | - | X | - | - | - | X |
| MRT 1645 115 | - | X | - | - | - | X |
| MRT 1845 75 | - | X | - | - | - | X |
| MRT 1845 115 | - | X | - | - | - | X |
| MRT 2145 115 | - | X | - | - | - | X |
| MRT 2260 | - | X | - | - | - | X |
| MRT 2260 e | - | X | - | - | - | X |
| MRT 2545 115 | - | X | - | - | - | X |
| MRT 2570 | - | X | - | - | - | X |
| MRT 2660 | - | X | - | - | - | X |
| MRT 2660 e | - | X | - | - | - | X |
| MRT 3060 | - | X | - | - | - | X |
| MRT 3570 | - | X | - | - | - | X |
| MRT 3570 ES | - | X | - | - | - | X |
| MRT-X 1645 | - | X | - | - | - | X |
| MRT-X 1845 | - | X | - | - | - | X |
| MRT-X 2145 | - | X | - | - | - | X |
| MRT-X 2260 | - | X | - | - | - | X |
| MRT-X 2545 | - | X | - | - | - | X |
| MRT-X 2570 | - | X | - | - | - | X |
| MRT-X 2660 | - | X | - | - | - | X |
| MRT-X 3060 | - | X | - | - | - | X |
| MRT-X 3570 | - | X | - | - | - | X |
| MRT-X 3570 ES | - | X | - | - | - | X |

| Compatibilité machine | BB 500 | BB 500 MRT | BBG 500 | BBH 500 | BBHG 500 | BBHG 500 MRT |
|--------------------------------------|--------|------------|---------|---------|----------|--------------|
| MRT 1640 Easy T4 S2 360° OLD | - | X | - | - | - | X |
| MRT 1840 Easy T4 S2 360° OLD | - | X | - | - | - | X |
| MRT 1840 Easy T4 S2 400° OLD | - | X | - | - | - | X |
| MRT 2145 Easy T4 S2 360° OLD | - | X | - | - | - | X |
| MRT 2145 Easy T4 S2 400° OLD | - | X | - | - | - | X |
| MRT 2150 Privilège Plus OLD | - | X | - | - | - | X |
| MRT 2470 Privilège Plus OLD | - | X | - | - | - | X |
| MRT 2545 Easy T4 S2 360° OLD | - | X | - | - | - | X |
| MRT 2545 Easy T4 S2 400° OLD | - | X | - | - | - | X |
| MRT 2550 Privilège Plus OLD | - | X | - | - | - | X |
| MRT 3050 Privilège Plus OLD | - | X | - | - | - | X |
| MRT-X 1840 Easy 360° OLD | - | X | - | - | - | X |
| MRT-X 1840 Easy 400° OLD | - | X | - | - | - | X |
| MRT-X 2150 Privilège Plus OLD | - | X | - | - | - | X |
| MRT-X 2470 Privilège Plus OLD | - | X | - | - | - | X |
| MRT-X 2545 Easy 360° OLD | - | X | - | - | - | X |
| MRT-X 2545 Easy 400° OLD | - | X | - | - | - | X |
| MRT-X 2550 Privilège Plus OLD | - | X | - | - | - | X |
| MRT-X 3050 Privilège Plus OLD | - | X | - | - | - | X |

| TABLEAU DES SYMBOLES | | | | | |
|---|-------------------------------|---|-------------------------------------|---|--|
|  | Aucune prédisposition requise |  | Ligne hydraulique en tête de flèche |  | Retour hydraulique au réservoir |
|  | Prédisposition électrique |  | Prédisposition nacelle |  | Prédisposition pinces à pneus, pinces à vérins |



 **MANITOU**
HANDLING YOUR WORLD

Siège Social

B.P. 249 - 430 rue de l'Aubinière
44150 Ancenis Cedex - France

Tel: +33 (0)2 40 09 10 11 - Fax: +33 (0)2 40 09 10 97

www.manitou.com



Cette publication présente le descriptif des versions et possibilités de configuration des produits Manitou qui peuvent différer en équipement. Les équipements présentés dans cette brochure peuvent être de série, en option, ou non disponibles suivant les versions. Manitou se réserve le droit, à tout moment et sans préavis, de modifier les spécifications décrites et représentées. Les spécifications portées n'engagent pas le constructeur. Pour plus de détails, contactez votre concessionnaire Manitou. Document non contractuel. Présentation des produits non contractuelle. Liste des spécifications non exhaustive. Les logos ainsi que l'identité visuelle de l'entreprise sont la propriété de Manitou et ne peuvent être utilisés sans autorisation. Tous droits réservés. Les photos et schémas contenus dans la présente brochure ne sont fournis qu'à des fins de consultation et à titre indicatif.

Manitou BF SA - Société anonyme à conseil d'administration - Capital social : 39 668 399 euros - 857 802 508 RCS Nantes