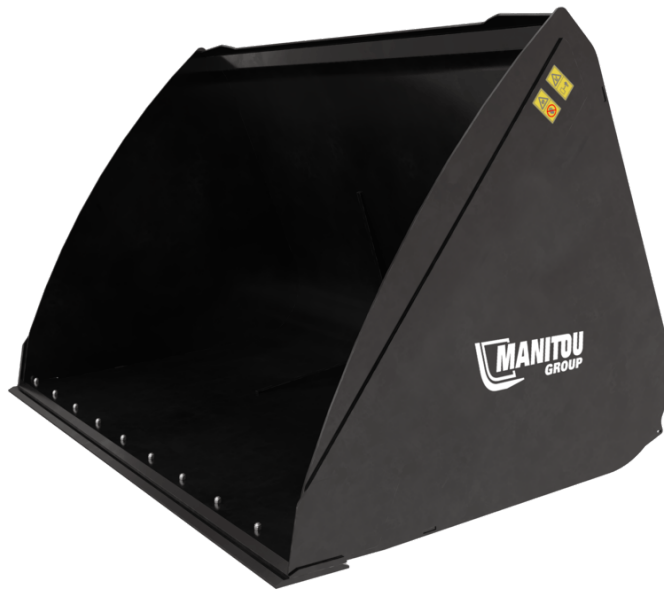


Technical sheet :

HIGH CAPACITY AGRICULTURAL BUCKET



Customer benefits

- Ideal bucket for bulk products (cereals, woodchip, mineral feed etc.)
- Modern design with maximal rigidity and resistance.
- Shape designed with 3° angle for quick loading and unloading operation.
- 500HB bolt-on cutting edge (LDR) for more longevity.

Technical characteristics

- Bulk product bucket suitable for handling materials with a density $\leq 1000 \text{ kg/m}^3$ / 62 lb/ft³.
- Reinforced structure (base, blade and sides).

[The 3D picture at the top of this page is the reference CBA 2700 / 4500 LDR - 52000508].

 **ATTACHMENTS**

Technical characteristics		CBA 2500 / 4000 LDR		CBA 2700 / 4500 LDR	
Distance to center of gravity (mm)		621		595	
Capacities					
Capacity (kg)		3205		3640	
Heaped capacity (l)		4007		4550	
Struck capacity (l)		3195		3617	
Weight					
Overall weight (kg)		1310		1400	
Weight and dimensions					
Overall height (mm)		h17		1677	
Overall length (mm)		l1		1896	
Width (mm)		2500		2700	
Depth (mm)		p5		1700	
Working Parameters					
Required machine equipment		✕		✕	
Other Data for Attachments					
Wear plate hardness		500		500	

Machines compatibility		CBA 2500 / 4000 LDR		CBA 2700 / 4500 LDR	
Reference number with bolted wearplate (WP)		52603178		52000508	
MLT 850-145 V+		X		X	
MLT 961-160 V+ L		X		X	
MLTX 850-145 V+		X		X	
MLTX 961-160 V+ L		X		X	
MLT 961-145 V+ L OLD		X		X	
MLTX 961-145 V+ L OLD		X		X	

TABLE SYMBOL					
	No predisposition required		Hydraulic line		Return piping to hydraulic oil tank
	Electric predisposition		Platform predisposition		Tyre handler, cylinder handler predisposition



Head Office

B.P. 249 - 430 rue de l'Aubinière

44150 Ancenis Cedex - France

Tel: +33 (0)2 40 09 10 11 - Fax: +33 (0)2 40 09 10 97

www.manitou.com



This publication provides a description of the configuration versions and options for Manitou products, which may differ for equipment. The equipment presented in this brochure may be part of a series, as an option, or it may not be available, depending on the versions. Manitou reserves the right, at any time and without notice, to amend the specifications described and represented. The specifications provided do not bind the manufacturer. For more details, please contact your Manitou agent. This is not a contractually binding document. The presentation of the products is not contractually binding. List of specifications non-exhaustive. The logos as well as the visual identity of the company are owned by Manitou and cannot be used without authorisation. All rights reserved. The photos and diagrams contained in this brochure are only provided for consultation and information purposes.

MANITOU BF SA - Limited company with board of directors - Share capital: 39,668,399 euros - 857 802 508 RCS Nantes