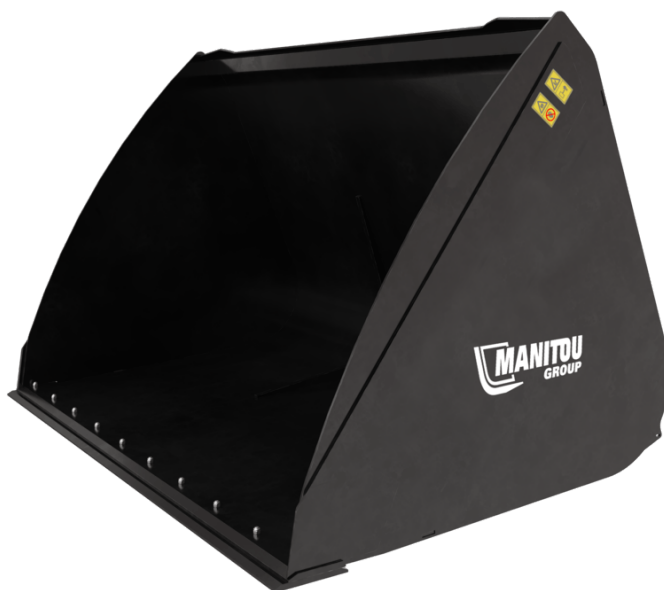


Technical sheet :

# HIGH CAPACITY AGRICULTURAL BUCKET



## Customer benefits

- Ideal bucket for bulk products (cereals, woodchip, mineral feed etc.)
- Modern design with maximal rigidity and resistance.
- Shape designed with 3° angle for quick loading and unloading operation.
- 500HB bolt-on cutting edge (LDR) for more longevity.

## Technical characteristics







- Bulk product bucket suitable for handling materials with a density  $\leq 1$ .
- Reinforced structure (base, blade and sides).

[The 3D picture at the top of this page is the reference CBA 2700 / 4500 LDR - 52000508].

**MANITOU GROUP ATTACHMENTS**

Technical characteristics		CBA 2500 / 4000 LDR	CBA 2700 / 4500 LDR
Distance to center of gravity (mm)		621	595
Capacities			
Capacity (kg)		3205	3640
Heaped capacity (l)		4007	4550
Struck capacity (l)		3195	3617
Weight			
Overall weight (kg)		1310	1400
Weight and dimensions			
Overall height (mm)	h17	1617	1677
Overall length (mm)	l1	1896	1896
Width (mm)		2500	2700
Depth (mm)	p5	1700	1700
Working Parameters			
Machine Equipment		✕	✕
Other Data for Attachments			
Wear plate hardness		500	500

Machines compatibility	CBA 2500 / 4000 LDR	CBA 2700 / 4500 LDR
Reference number with bolted wearplate (WP)	52603178	52000508
MLT 850-145 V+	X	X
MLT 961-160 V+ L	X	X
MLTX 850-145 V+	X	X
MLTX 961-160 V+ L	X	X
MLT 961-145 V+ L <span>OLD</span>	X	X
MLTX 961-145 V+ L <span>OLD</span>	X	X

TABLE SYMBOL					
	No predisposition required		Hydraulic line		Return piping to hydraulic oil tank
	Electric predisposition		Platform predisposition		Tyre handler, cylinder handler predisposition



**Head Office**

B.P. 249 - 430 rue de l'Aubinière

44150 Ancenis Cedex - France

Tel: +33 (0)2 40 09 10 11 - Fax: +33 (0)2 40 09 10 97

[www.manitou.com](http://www.manitou.com)



This publication provides a description of the configuration versions and options for Manitou products, which may differ for equipment. The equipment presented in this brochure may be part of a series, as an option, or it may not be available, depending on the versions. Manitou reserves the right, at any time and without notice, to amend the specifications described and represented. The specifications provided do not bind the manufacturer. For more details, please contact your Manitou agent. This is not a contractually binding document. The presentation of the products is not contractually binding. List of specifications non-exhaustive. The logos as well as the visual identity of the company are owned by Manitou and cannot be used without authorisation. All rights reserved. The photos and diagrams contained in this brochure are only provided for consultation and information purposes.

MANITOU BF SA - Limited company with board of directors - Share capital: 39,668,399 euros - 857 802 508 RCS Nantes