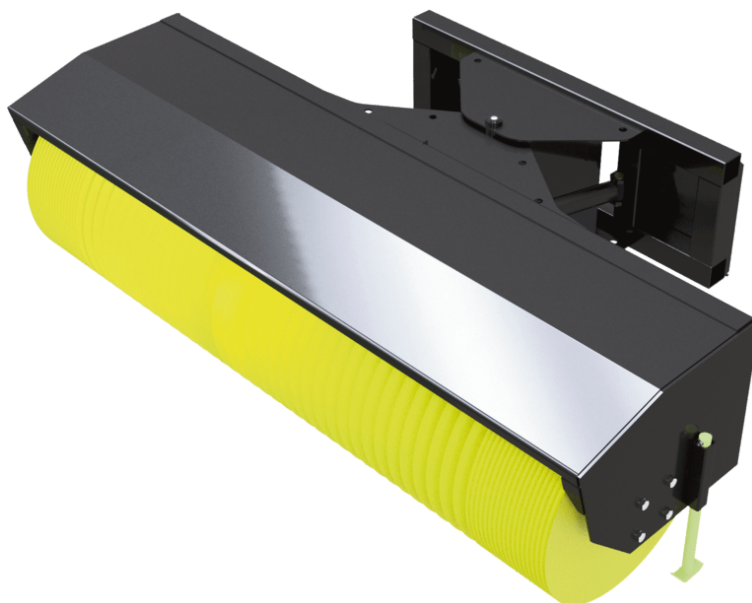


Technical sheet :

ANGLE BROOM (COMPACT MACHINES)







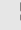
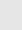
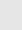


Customer benefits

- Based on a bucket: cutting edge can be used to scrap packed material.

Technical characteristics

- Sweeps and picks-up in one operation.
- Strong construction with well-protected components.
Polypropylene broom sections

| Weight | | SCA 1330 | SCA 1530 | SCA 1680 | SCA 1750 | SCA 1850 | SCA 1900 | SCA 2080 (a) | SCA 2080 (b) | SCA 2140 |
|-----------------------|-----|---|---|---|---|---|---|---|---|---|
| Overall weight (kg) | | 360 | 400 | 410 | 390 | 420 | 400 | 410 | 410 | - |
| Weight and dimensions | | | | | | | | | | |
| Overall height (mm) | h17 | 684 | 684 | 684 | 684 | 684 | 684 | 684 | 684 | - |
| Width (mm) | | 1448 | 1753 | 1908 | 1753 | 2078 | 1908 | 2078 | 2078 | 2140 |
| Depth (mm) | p5 | 1331 | 1331 | 1331 | 1331 | 1331 | 1331 | 1331 | 1331 | - |
| Working Parameters | | | | | | | | | | |
| Machine Equipment | |  |  |  |  |  |  |  |  |  |
| Horizontal angle (°) | | 30 | 30 | 30 | 30 | 30 | 30 | 30 | 30 | - |

| Machines compatibility | SCA 1330 | SCA 1530 | SCA 1680 | SCA 1750 | SCA 1850 | SCA 1900 | SCA 2080 (a) | SCA 2080 (b) | SCA 2140 |
|------------------------|-----------|-----------|-----------|-----------|-----------|-----------|--------------|--------------|-----------|
| All-Tach® Narrow | N004039 | N004040 | - | - | - | - | - | - | - |
| All-Tach® | - | N004041 | N004042 | N51502366 | N004043 | N51502367 | N51502370 | N51502496 | N51502055 |
| 4 point Carriage | N51502376 | N51502377 | N51502378 | - | N51502379 | - | - | - | - |
| Euro Carriage | N51502380 | N51502381 | N51502382 | - | N51502383 | - | - | - | - |
| 1050RT | - | - | - | X | - | X | - | - | - |
| 1350R NXT2 | - | - | - | X | - | X | - | - | - |
| 1350RT | - | - | - | X | - | X | - | - | - |
| 1650R | - | - | - | - | - | X | - | - | - |
| 1650RT | - | - | - | X | - | X | - | - | - |
| 1950RT | - | - | - | X | - | X | - | - | - |
| 1950RT | - | - | - | X | - | X | - | - | - |
| 1950RT | - | - | - | X | - | X | - | - | - |
| 1950RT | - | - | - | X | - | X | - | - | - |
| AL230 | X | X | - | - | - | - | - | - | - |
| AL320 | X | X | - | - | - | - | - | - | - |
| AL330 | X | X | - | - | - | - | - | - | - |
| AL420 | X | X | X | - | - | - | - | - | - |
| AL430 | X | X | X | - | - | - | - | - | - |
| AL530 | - | X | X | - | - | - | - | - | - |
| AL550 | - | X | X | - | X | - | - | - | - |
| MLA 2-25 H | X | X | - | - | - | - | - | - | - |
| MLA 3-25 H | X | X | - | - | - | - | - | - | - |
| MLA 3-25 H-C | X | X | - | - | - | - | - | - | - |
| MLA 4-50 H | X | X | X | - | - | - | - | - | - |
| MLA 4-50 H-C | X | X | X | - | - | - | - | - | - |
| MLA 5-50 H | - | X | X | - | - | - | - | - | - |
| MLA 5-60 H-Z | - | X | X | - | X | - | - | - | - |
| R165 | - | - | - | - | - | X | - | - | - |
| RT105 | - | - | - | X | - | X | - | - | - |
| RT135 | - | - | - | X | - | X | - | - | - |
| RT165 | - | - | - | X | - | X | - | - | - |
| RT195 - NEW | - | - | - | X | - | X | - | - | - |
| RT195 - NEW | - | - | - | X | - | X | - | - | - |
| RT195 - NEW | - | - | - | X | - | X | - | - | - |
| 1850RT OLD | - | - | - | - | - | - | - | - | X |
| 1900R OLD | - | - | - | - | - | - | - | X | - |
| 2150RT OLD | - | - | - | - | - | - | - | - | X |
| 2200R OLD | - | - | - | - | - | - | - | X | - |
| 2600R OLD | - | - | - | - | - | - | - | X | - |
| 2700V NXT2 OLD | - | - | - | - | - | - | X | - | - |
| AL140 OLD | X | X | - | - | - | - | - | - | - |
| AL340 OLD | X | X | - | - | - | - | - | - | - |
| AL440 OLD | - | X | X | - | - | - | - | - | - |
| MLA 1-25 H OLD | X | X | - | - | - | - | - | - | - |
| MLA 3-35 H OLD | X | X | - | - | - | - | - | - | - |
| MLA 4-50 H OLD | X | X | X | - | - | - | - | - | - |
| R220 OLD | - | - | - | - | - | - | - | X | - |
| R260 OLD | - | - | - | - | - | - | - | X | - |
| RT185 OLD | - | - | - | - | - | - | - | - | X |
| RT215 OLD | - | - | - | - | - | - | - | - | X |
| V270 OLD | - | - | - | - | - | - | X | - | - |

| TABLE SYMBOL | | | | | |
|---|----------------------------|---|-------------------------|---|---|
|  | No predisposition required |  | Hydraulic line |  | Return piping to hydraulic oil tank |
|  | Electric predisposition |  | Platform predisposition |  | Tyre handler, cylinder handler predisposition |



Head Office

B.P. 249 - 430 rue de l'Aubinière

44150 Ancenis Cedex - France

Tel: +33 (0)2 40 09 10 11 - Fax: +33 (0)2 40 09 10 97

www.manitou.com



This publication provides a description of the configuration versions and options for Manitou products, which may differ for equipment. The equipment presented in this brochure may be part of a series, as an option, or it may not be available, depending on the versions. Manitou reserves the right, at any time and without notice, to amend the specifications described and represented. The specifications provided do not bind the manufacturer. For more details, please contact your Manitou agent. This is not a contractually binding document. The presentation of the products is not contractually binding. List of specifications non-exhaustive. The logos as well as the visual identity of the company are owned by Manitou and cannot be used without authorisation. All rights reserved. The photos and diagrams contained in this brochure are only provided for consultation and information purposes.

MANITOU BF SA - Limited company with board of directors - Share capital: 39,668,399 euros - 857 802 508 RCS Nantes