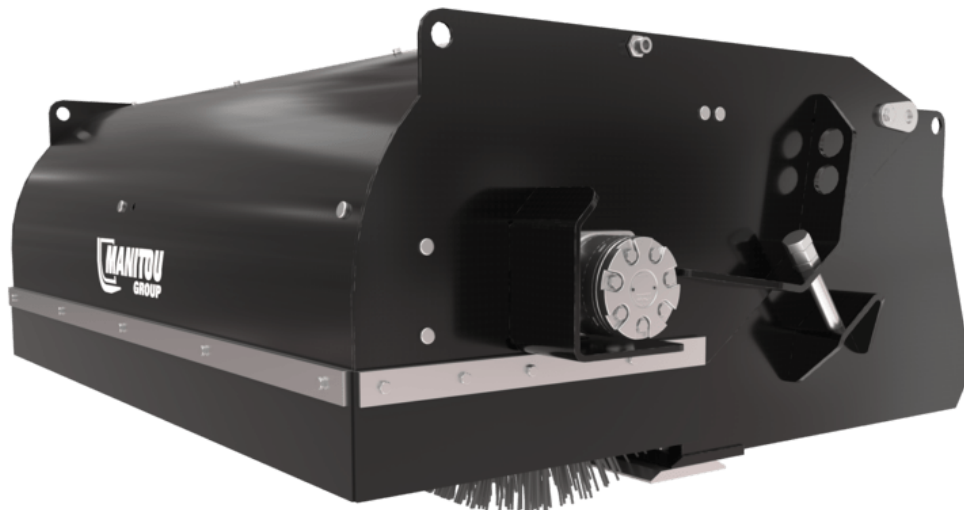


# BROOMBUCKET (COMPACT MACHINES)

# SWEEPER & CLEANER



# GEHL®

## Customer benefits

- Sweeps and picks-up in one operation.
- Based on a bucket: cutting edge can be used to scrap packed material.




## Technical characteristics

- Strong construction with well-protected components : polypropylene broom sections







[The 3D picture at the top of this page is the reference SCB 1525 - 52715996].

**MANITOU GROUP ATTACHMENTS**



Weight		SCB 1850 (b)	SCB 2080	SCB 2140
Overall weight (kg)		460	525	610
Weight and dimensions				
Overall height (mm)	h17	690	690	690
Width (mm)		2103	2330	2393
Depth (mm)	p5	1308	1308	1308
Working Parameters				
Machine Equipment				
Working width - angled (mm)		1850	2080	2140

Machines compatibility	SCB 1850 (b)	SCB 2080	SCB 2140
All-Tach® Narrow	-	-	-
All-Tach®	N51502050	N700266	N51502051
4 point Carriage	-	-	-
Euro Carriage	-	-	-
1850RT	X	-	-
2150RT	X	-	X
2600R	-	X	-
2700V NXT2	-	X	-
3300V NXT2	-	X	-
4200V	-	X	-
R260	-	X	-
RT185	X	-	-
RT215	X	-	X
V330 GEN:2	-	X	-
V330 GEN:2	-	X	-
V270 <b>OLD</b>	-	X	-

TABLE SYMBOL					
	No predisposition required		Hydraulic line		Return piping to hydraulic oil tank
	Electric predisposition		Platform predisposition		Tyre handler, cylinder handler predisposition



# GEHL®

Siège Social  
P.O. Box 179 - One Gehl Way - West Bend, WI, USA 53095  
Tel: (262) 334-9461 - Fax: (262) 338-7517  
[www.gehl.com](http://www.gehl.com)



This brochure describes versions and configuration options for Gehl products which may be fitted with different equipment. The equipment described in this brochure may be standard, optional or not available depending on version. Gehl reserves the right to change the specifications shown and described at any time and without prior warning. The manufacturer is not liable for the specifications given. For more information, contact your Gehl dealer. Non-contractual document. Product descriptions may differ from actual products. List of specifications is not comprehensive. The logos and visual identity of the company are the property of Gehl and may not be used without authorization. All rights reserved. The photos and diagrams contained in this brochure are provided for information only.

MANITOU EQUIPMENT AMERICAS, LLC - Limited company with board of directors - Share capital: 39,668,399 euros - 857 802 508 RCS West Bend