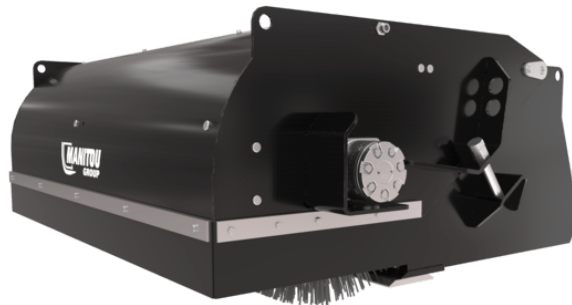


Technical sheet :

# **BROOM BUCKET (COMPACT MACHINES)**

---



## **Technical characteristics**




- Strong construction with well-protected components : polypropylene broom sections

[The 3D picture at the top of this page is the reference SCB 1525 - 52715996].







## **Customer benefits**

- Sweeps and picks-up in one operation.
- Based on a bucket: cutting edge can be used to scrap packed material.



Weight		SCB 1850 (b)	SCB 2080	SCB 2140
Overall weight (kg)		460	525	610
Weight and dimensions				
Overall height (mm)	h17	690	690	690
Width (mm)		2103	2330	2393
Depth (mm)	p5	1308	1308	1308
Working Parameters				
Required machine equipment				
Working width - angled (mm)		1850	2080	2140

Machines compatibility	SCB 1850 (b)	SCB 2080	SCB 2140
All-Tach® Narrow	-	-	-
All-Tach®	N51502050	N700266	N51502051
4 point Carriage	-	-	-
Euro Carriage	-	-	-
3300V NXT2	-	X	-
V330 GEN:2	-	X	-
V330 GEN:2	-	X	-
1850RT <b>OLD</b>	X	-	-
2150RT <b>OLD</b>	X	-	X
2600R <b>OLD</b>	-	X	-
2700V NXT2 <b>OLD</b>	-	X	-
4200V <b>OLD</b>	-	X	-
R260 <b>OLD</b>	-	X	-
RT185 <b>OLD</b>	X	-	-
RT215 <b>OLD</b>	X	-	X
V270 <b>OLD</b>	-	X	-

TABLE SYMBOL					
	No predisposition required		Hydraulic line		Return piping to hydraulic oil tank
	Electric predisposition		Platform predisposition		Tyre handler, cylinder handler predisposition



**Head Office**

B.P. 249 - 430 rue de l'Aubinière  
44150 Ancenis Cedex - France

Tel: +33 (0)2 40 09 10 11 - Fax: +33 (0)2 40 09 10 97

[www.manitou.com](http://www.manitou.com)



This publication provides a description of the configuration versions and options for Manitou products, which may differ for equipment. The equipment presented in this brochure may be part of a series, as an option, or it may not be available, depending on the versions. Manitou reserves the right, at any time and without notice, to amend the specifications described and represented. The specifications provided do not bind the manufacturer. For more details, please contact your Manitou agent. This is not a contractually binding document. The presentation of the products is not contractually binding. List of specifications non-exhaustive. The logos as well as the visual identity of the company are owned by Manitou and cannot be used without authorisation. All rights reserved. The photos and diagrams contained in this brochure are only provided for consultation and information purposes.

MANITOU BF SA - Limited company with board of directors - Share capital: 39,668,399 euros - 857 802 508 RCS Nantes