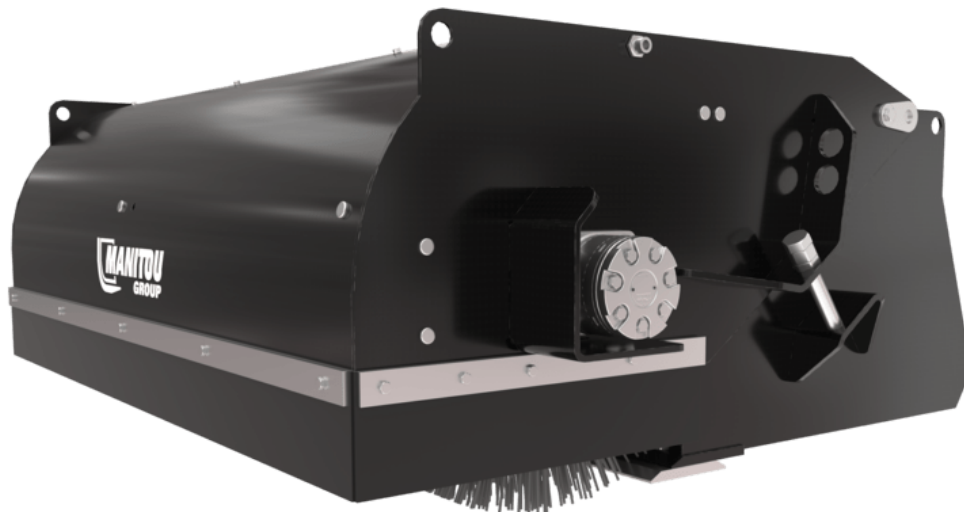


# BROOMBUCKET (COMPACT MACHINES)

# スィーパー&クリーナ ー



# GEHL®

## お客様のメリット

- Sweeps and picks-up in one operation.
- Based on a bucket: cutting edge can be used to scrap packed material.




## 諸元

- Strong construction with well-protected components : polypropylene broom sections

[The 3D picture at the top of this page is the reference SCB 1525 - 52715996].

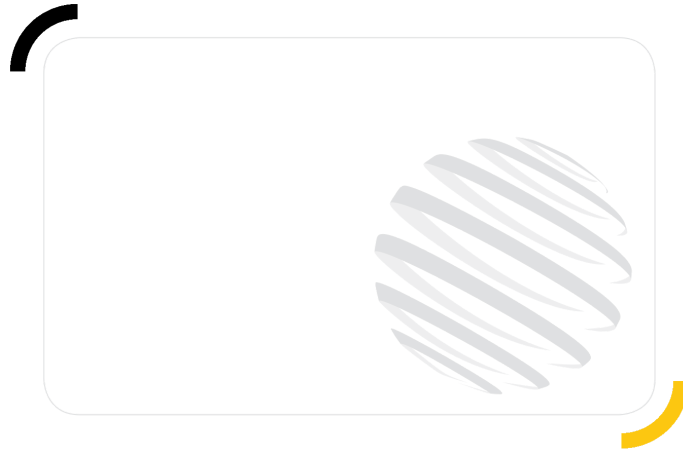
 **ATTACHMENTS**



重量		SCB 1850 (b)	SCB 2080	SCB 2140
重量 (kg)		460	525	610
仕様				
全高 (mm)	h17	690	690	690
幅 (mm)		2103	2330	2393
深さ (mm)	p5	1308	1308	1308
ワーキング パラメーター				
機械設備				
作業時幅・角度 (mm)		1850	2080	2140

マシンの互換性	SCB 1850 (b)	SCB 2080	SCB 2140
All-Tach® 幅狭	-	-	-
All-Tach®	N51502050	N700266	N51502051
4点キャリッジ	-	-	-
欧州キャリッジ	-	-	-
1850RT	X	-	-
2150RT	X	-	X
2600R	-	X	-
2700V NXT2	-	X	-
3300V NXT2	-	X	-
4200V	-	X	-
R260	-	X	-
RT185	X	-	-
RT215	X	-	X
V330 GEN:2	-	X	-
V330 GEN:2	-	X	-
V270 <b>OLD</b>	-	X	-

記号の表					
	前処理が不要		油圧ライン		タンクへの油圧リターン
	電気要素		プラットフォーム要素		タイヤクランプ、シリンダークランプ要素



# GEHL®

Siège Social  
P.O. Box 179 - One Gehl Way - West Bend, WI, USA 53095  
Tel: (262) 334-9461 - Fax: (262) 338-7517  
[www.gehl.com](http://www.gehl.com)



This brochure describes versions and configuration options for Gehl products which may be fitted with different equipment. The equipment described in this brochure may be standard, optional or not available depending on version. Gehl reserves the right to change the specifications shown and described at any time and without prior warning. The manufacturer is not liable for the specifications given. For more information, contact your Gehl dealer. Non-contractual document. Product descriptions may differ from actual products. List of specifications is not comprehensive. The logos and visual identity of the company are the property of Gehl and may not be used without authorization. All rights reserved. The photos and diagrams contained in this brochure are provided for information only.

MANITOU EQUIPMENT AMERICAS, LLC - Limited company with board of directors - Share capital: 39,668,399 euros - 857 802 508 RCS West Bend