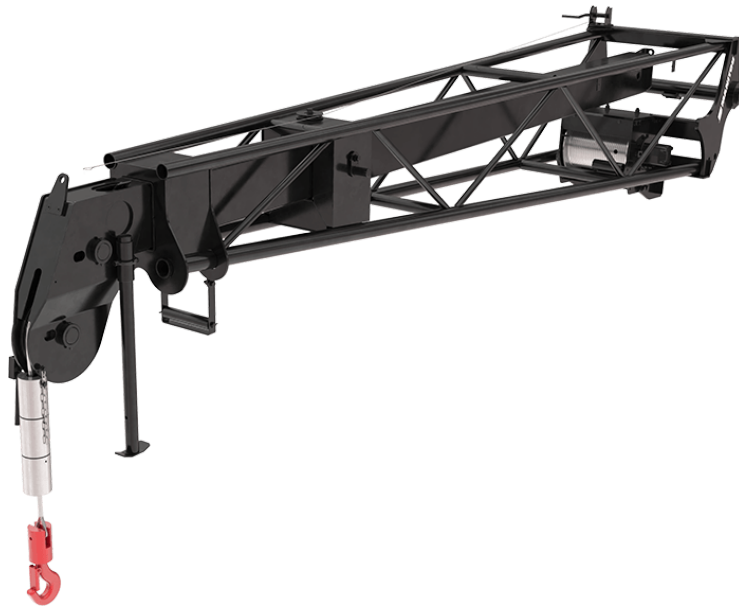


Technical sheet :

EXTENSIBLE JIB WITH WINCH



Customer benefits

- Suspended load handling solution for all type of building sites.
- Perfect for transporting and placing beams, frames and other light and bulky elements.
- Its telescopic boom allows to gain greater flexibility while keeping an important forward reach.
- Tubular structure designed for an optimal weight / rigidity ratio
- Excellent adaptability.

Technical characteristics

- Oil immersed negative brake.
- Safety: homologated swivel self locking hook.
- Safety: end of cable/hook upper position automatic movement stop.
- Manual extension (manual winch) with adjustable jib length.
- Adjustable length for an excellent polyvalence (extension: manual jib).

Technical characteristics		JWE 7000 / 800 39M	PT 800
Distance to center of gravity (mm)		1791	1791
Working height (mm)	h21	41000	32000
Capacities			
Capacity (kg)		800	800
Capacity 2 (kg)		1000	1000
Weight			
Overall weight (kg)		605	605
Dimensions			
Max. outreach (mm)		4525	4525
Max @ outreach 2 (mm)		7183	7183
Weight and dimensions			
Overall length (mm)	l1	4632	4632
Width (mm)		870	870
Cable length (mm)		49000	37000
Working Parameters			
Machine Equipment			
Hook Speed (m/mn)		30	30

Machines compatibility	JWE 7000 / 800 39M	PT 800
Reference number E-RECO	52717860	921323
MRT 1845 75	X	-
MRT 1845 115	X	-
MRT 2145 115	X	-
MRT 2260	X	-
MRT 2260 e	X	-
MRT 2545 115	X	-
MRT 2570	X	-
MRT 2660	X	-
MRT 2660 e	X	-
MRT 3060	X	-
MRT 3570	X	-
MRT 3570 ES	X	-
MRT-X 1845	X	-
MRT-X 2145	X	-
MRT-X 2260	X	-
MRT-X 2545	X	-
MRT-X 2570	X	-
MRT-X 2660	X	-
MRT-X 3060	X	-
MRT-X 3570	X	-
MRT-X 3570 ES	X	-
MRT 2150 Privilege Plus OLD	-	X
MRT 2470 Privilege Plus OLD	-	X
MRT 2550 Privilege Plus OLD	-	X
MRT 3050 Privilege Plus OLD	-	X
MRT 3255 Privilege Plus OLD	-	X
MRT-X 2150 Privilege Plus OLD	-	X
MRT-X 2470 Privilege Plus OLD	-	X
MRT-X 2550 Privilege Plus OLD	-	X
MRT-X 3050 Privilege Plus OLD	-	X
MRT-X 3255 Privilege Plus OLD	-	X

TABLE SYMBOL					
	No predisposition required		Hydraulic line		Return piping to hydraulic oil tank
	Electric predisposition		Platform predisposition		Tyre handler, cylinder handler predisposition



Head Office

B.P. 249 - 430 rue de l'Aubinière

44150 Ancenis Cedex - France

Tel: +33 (0)2 40 09 10 11 - Fax: +33 (0)2 40 09 10 97

www.manitou.com



This publication provides a description of the configuration versions and options for Manitou products, which may differ for equipment. The equipment presented in this brochure may be part of a series, as an option, or it may not be available, depending on the versions. Manitou reserves the right, at any time and without notice, to amend the specifications described and represented. The specifications provided do not bind the manufacturer. For more details, please contact your Manitou agent. This is not a contractually binding document. The presentation of the products is not contractually binding. List of specifications non-exhaustive. The logos as well as the visual identity of the company are owned by Manitou and cannot be used without authorisation. All rights reserved. The photos and diagrams contained in this brochure are only provided for consultation and information purposes.

MANITOU BF SA - Limited company with board of directors - Share capital: 39,668,399 euros - 857 802 508 RCS Nantes