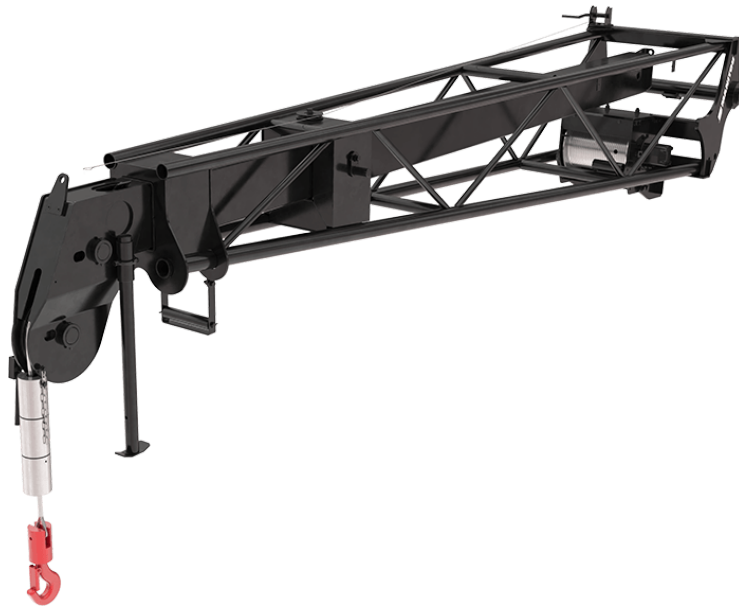


Technical sheet :

# EXTENSIBLE JIB WITH WINCH



## Customer benefits

- Suspended load handling solution for all type of building sites.
- Perfect for transporting and placing beams, frames and other light and bulky elements.
- Its telescopic boom allows to gain greater flexibility while keeping an important forward reach.
- Tubular structure designed for an optimal weight / rigidity ratio
- Excellent adaptability.

## Technical characteristics

- Oil immersed negative brake.
- Safety: homologated swivel self locking hook.
- Safety: end of cable/hook upper position automatic movement stop.
- Manual extension (manual winch) with adjustable jib length.
- Adjustable length for an excellent polyvalence (extension: manual jib).

| Technical characteristics          |     | JWE 7000 / 800 39M  | PT 800  |
|------------------------------------|-----|---|---|
| Distance to center of gravity (mm) |     | 1791  | 1791  |
| Working height (mm)                | h21 | 41000   | 32000   |
| Capacities                         |     |   |   |
| Capacity (kg)                      |     | 800   | 800   |
| Capacity 2 (kg)                    |     | 1000  | 1000  |
| Weight                             |     |   |   |
| Overall weight (kg)                |     | 605   | 605   |
| Dimensions                         |     |   |   |
| Max. outreach (mm)                 |     | 4525  | 4525  |
| Max @ outreach 2 (mm)              |     | 7183  | 7183  |
| Weight and dimensions              |     |   |   |
| Overall length (mm)                | l1  | 4632  | 4632  |
| Width (mm)                         |     | 870   | 870   |
| Cable length (mm)                  |     | 49000   | 37000   |
| Working Parameters                 |     |   |   |
| Machine Equipment                  |     |  |  |
| Hook Speed (m/mn)                  |     | 30  | 30  |

| Machines compatibility               | JWE 7000 / 800 39M | PT 800 |
|--------------------------------------|--------------------|--------|
| Reference number E-RECO              | 52717860           | 921323 |
| MRT 1845 75                          | X                  | -      |
| MRT 1845 115                         | X                  | -      |
| MRT 2145 115                         | X                  | -      |
| MRT 2260                             | X                  | -      |
| MRT 2260 e                           | X                  | -      |
| MRT 2545 115                         | X                  | -      |
| MRT 2570                             | X                  | -      |
| MRT 2660                             | X                  | -      |
| MRT 2660 e                           | X                  | -      |
| MRT 3060                             | X                  | -      |
| MRT 3570                             | X                  | -      |
| MRT 3570 ES                          | X                  | -      |
| MRT-X 1845                           | X                  | -      |
| MRT-X 2145                           | X                  | -      |
| MRT-X 2260                           | X                  | -      |
| MRT-X 2545                           | X                  | -      |
| MRT-X 2570                           | X                  | -      |
| MRT-X 2660                           | X                  | -      |
| MRT-X 3060                           | X                  | -      |
| MRT-X 3570                           | X                  | -      |
| MRT-X 3570 ES                        | X                  | -      |
| MRT 2150 Privilege Plus <b>OLD</b>   | -                  | X      |
| MRT 2470 Privilege Plus <b>OLD</b>   | -                  | X      |
| MRT 2550 Privilege Plus <b>OLD</b>   | -                  | X      |
| MRT 3050 Privilege Plus <b>OLD</b>   | -                  | X      |
| MRT 3255 Privilege Plus <b>OLD</b>   | -                  | X      |
| MRT-X 2150 Privilege Plus <b>OLD</b> | -                  | X      |
| MRT-X 2470 Privilege Plus <b>OLD</b> | -                  | X      |
| MRT-X 2550 Privilege Plus <b>OLD</b> | -                  | X      |
| MRT-X 3050 Privilege Plus <b>OLD</b> | -                  | X      |
| MRT-X 3255 Privilege Plus <b>OLD</b> | -                  | X      |

| TABLE SYMBOL  |                            |   |                         |   |   |
|---|----------------------------|---|-------------------------|---|---|
|  | No predisposition required |  | Hydraulic line          |  | Return piping to hydraulic oil tank           |
|  | Electric predisposition    |  | Platform predisposition |  | Tyre handler, cylinder handler predisposition |



**Head Office**

B.P. 249 - 430 rue de l'Aubinière

44150 Ancenis Cedex - France

Tel: +33 (0)2 40 09 10 11 - Fax: +33 (0)2 40 09 10 97

[www.manitou.com](http://www.manitou.com)



This publication provides a description of the configuration versions and options for Manitou products, which may differ for equipment. The equipment presented in this brochure may be part of a series, as an option, or it may not be available, depending on the versions. Manitou reserves the right, at any time and without notice, to amend the specifications described and represented. The specifications provided do not bind the manufacturer. For more details, please contact your Manitou agent. This is not a contractually binding document. The presentation of the products is not contractually binding. List of specifications non-exhaustive. The logos as well as the visual identity of the company are owned by Manitou and cannot be used without authorisation. All rights reserved. The photos and diagrams contained in this brochure are only provided for consultation and information purposes.

MANITOU BF SA - Limited company with board of directors - Share capital: 39,668,399 euros - 857 802 508 RCS Nantes