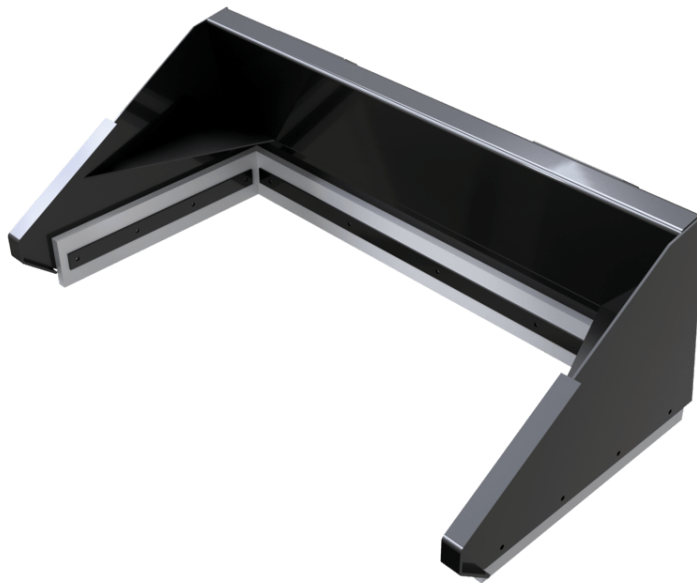


Technical sheet :

FARM YARD SCRAPER (COMPACT MACHINES)



Customer benefits







- Farm yard cleaning made easy.
- Very simple and efficient attachment.

Technical characteristics

- Bottom fitted with a rubber protection.

Weight		BLSS 1800 (a)	BLSS 1800 (b)	BLSS 1890 (a)	BLSS 1890 (b)
Overall weight (kg)		124	124	138	138
Weight and dimensions					
Overall height (mm)	h17	611	611	611	611
Width (mm)		1800	1800	1890	1890
Depth (mm)	p5	900	900	900	900
Working Parameters					
Machine Equipment		×	×	×	×

Machines compatibility	BLSS 1800 (a)	BLSS 1800 (b)	BLSS 1890 (a)	BLSS 1890 (b)
All-Tach®	N757036	N51502498	N757037	N51502499
2300V	-	X	-	-
2600R	-	X	-	X
2700V NXT2	X	-	X	-
2750V	X	-	X	X
R260	-	X	-	X
V230 - NEW	-	X	-	-
V275 - NEW	X	-	X	X

TABLE SYMBOL					
	No predisposition required		Hydraulic line		Return piping to hydraulic oil tank
	Electric predisposition		Platform predisposition		Tyre handler, cylinder handler predisposition



Head Office

B.P. 249 - 430 rue de l'Aubinière

44150 Ancenis Cedex - France

Tel: +33 (0)2 40 09 10 11 - Fax: +33 (0)2 40 09 10 97

www.manitou.com



This publication provides a description of the configuration versions and options for Manitou products, which may differ for equipment. The equipment presented in this brochure may be part of a series, as an option, or it may not be available, depending on the versions. Manitou reserves the right, at any time and without notice, to amend the specifications described and represented. The specifications provided do not bind the manufacturer. For more details, please contact your Manitou agent. This is not a contractually binding document. The presentation of the products is not contractually binding. List of specifications non-exhaustive. The logos as well as the visual identity of the company are owned by Manitou and cannot be used without authorisation. All rights reserved. The photos and diagrams contained in this brochure are only provided for consultation and information purposes.

MANITOU BF SA - Limited company with board of directors - Share capital: 39,668,399 euros - 857 802 508 RCS Nantes