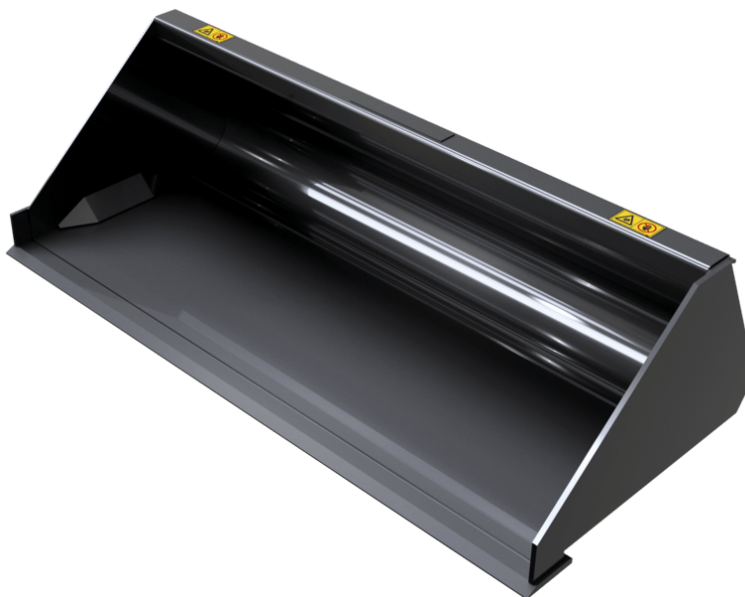


ŁYŻKA WYBURZENIOWA O WYSOKIEJ ODPORNOCI (MASZYNY KOMPAKTOWE)

ŁYŻKI



GEHL®

Korzyści dla klienta

- Bardzo wytrzymała łyżka do ciężkiej pracy: wyburzenia, trzymowanie statków, itp..

Charakterystyka techniczna

- Wzmocniona konstrukcja: boki, część górna, itp..
- Nóż i krawędzie boczne stal 400 HB.
- łyżka niskoprofilowa: bardzo dobra penetracja materiałów i łatwy dostęp do kabiny.







MANITOU GROUP ATTACHMENTS

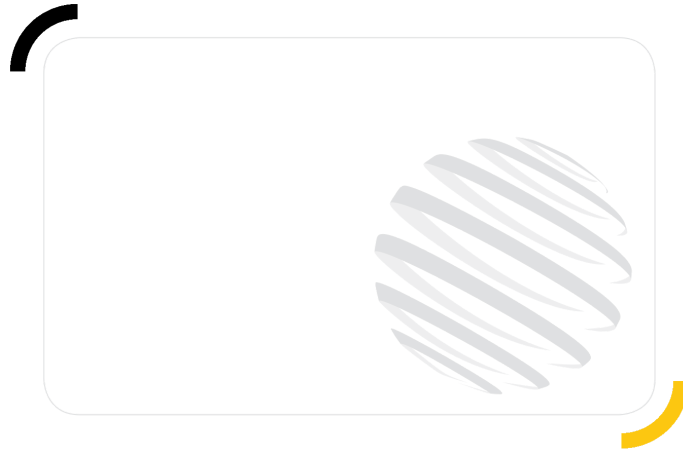
| Pojemność | | BD 1080 / 180 | BD 1380 / 320 | BD 1520 / 350 | BD 1680 / 670 | BD 1760 / 500 | BD 1760 / 580 | BD 1760 / 700 | BD 1830 / 520 | BD 1830 / 600 | BD 1850 / 740 |
|--------------------------|-----|---------------|---------------|---------------|---------------|---------------|---------------|---------------|---------------|---------------|---------------|
| Pojemność kopuły (l) | | 180 | 320 | 350 | 670 | 580 | 500 | 700 | 600 | 520 | 740 |
| Weight | | | | | | | | | | | |
| Masa całkowita (kg) | | 68 | 137 | 143 | 295 | 190 | 190 | 305 | 220 | 206 | 315 |
| Waga i wymiary | | | | | | | | | | | |
| Wysokość całkowita (mm) | h17 | 427 | 470 | 470 | 600 | 501 | 502 | 600 | 501 | 502 | 600 |
| Szerokość (mm) | | 1080 | 1380 | 1520 | 1680 | 1760 | 1760 | 1760 | 1830 | 1830 | 1850 |
| Głębokość (mm) | p5 | 700 | 841 | 841 | 1100 | 916 | 924 | 1100 | 916 | 924 | 1100 |
| Parametry robocze | | | | | | | | | | | |
| Wyposażenie maszyny | | × | × | × | × | × | × | × | × | × | × |
| Rura elastyczna | | Nie | Nie | Nie | Nie | Nie | Nie | Nie | Nie | Nie | Nie |

| Kompatybilność maszyn | BD 1080 / 180 | BD 1380 / 320 | BD 1520 / 350 | BD 1680 / 670 | BD 1760 / 500 | BD 1760 / 580 | BD 1760 / 700 | BD 1830 / 520 | BD 1830 / 600 | BD 1850 / 740 |
|-----------------------|----------------|----------------|----------------|------------------|------------------|----------------|------------------|------------------|----------------|------------------|
| All-Tach® | N726005 | N736008 | N736009 | N51502029 | N51502464 | N757007 | N51502030 | N51502465 | N757008 | N51502031 |
| 1050R | - | X | - | - | - | - | - | - | - | - |
| 1050RT | - | X | - | - | - | - | - | - | - | - |
| 1350R NXT2 | - | X | X | - | - | - | - | - | - | - |
| 1350RT | - | X | X | - | - | - | - | - | - | - |
| 1640 E | X | - | - | - | - | - | - | - | - | - |
| 1650R | - | - | - | - | - | X | - | - | - | - |
| 1650RT | - | - | - | - | - | X | - | - | - | - |
| 1850RT | - | - | - | X | - | - | X | - | - | X |
| 1900R | - | - | - | - | X | - | - | - | - | - |
| 1950RT | - | - | - | - | - | X | - | - | - | - |
| 1950RT | - | - | - | - | - | X | - | - | - | - |
| 1950RT | - | - | - | - | - | X | - | - | - | - |
| 1950RT | - | - | - | - | - | X | - | - | - | - |
| 2100V | - | - | - | - | X | - | - | - | - | - |
| 2100VT | - | - | - | X | - | - | X | - | - | X |
| 2150RT | - | - | - | - | - | - | - | - | - | X |
| 2200R | - | - | - | - | X | - | - | - | X | - |
| 2300V | - | - | - | - | X | - | - | X | - | - |
| 2300VT | - | - | - | - | - | - | - | - | - | X |
| 2600R | - | - | - | - | - | - | - | - | X | - |
| 2700V NXT2 | - | - | - | - | - | X | - | X | - | - |
| 2750V | - | - | - | - | - | X | - | X | X | - |
| 2750VT | - | - | - | - | - | - | - | - | - | X |
| R105 | - | X | - | - | - | - | - | - | - | - |
| R165 | - | - | - | - | - | X | - | - | - | - |
| R220 | - | - | - | - | X | - | - | - | X | - |
| R260 | - | - | - | - | - | - | - | - | X | - |
| RT105 | - | X | - | - | - | - | - | - | - | - |
| RT135 | - | X | X | - | - | - | - | - | - | - |
| RT165 | - | - | - | - | - | X | - | - | - | - |
| RT185 | - | - | - | X | - | - | X | - | - | X |
| RT195 - NEW | - | - | - | - | - | X | - | - | - | - |
| RT195 - NEW | - | - | - | - | - | X | - | - | - | - |
| RT195 - NEW | - | - | - | - | - | X | - | - | - | - |
| RT215 | - | - | - | - | - | - | - | - | - | X |
| V210 - NEW | - | - | - | - | X | - | - | - | - | - |
| V230 - NEW | - | - | - | - | X | - | - | X | - | - |
| V275 - NEW | - | - | - | - | - | X | - | X | X | - |
| VT210 - NEW | - | - | - | X | - | - | X | - | - | X |
| VT230 - NEW | - | - | - | - | - | - | - | - | - | X |
| VT275 - NEW | - | - | - | - | - | - | - | - | - | X |
| VT275 - NEW | - | - | - | - | - | - | - | - | - | X |
| V270 OLD | - | - | - | - | - | X | - | X | - | - |

| Pojemność | | BD 1880 / 750 | BD 2140 / 870 (a) | BD 2140 / 870 (b) |
|--------------------------|-----|---------------|-------------------|-------------------|
| Pojemność kopuły (l) | | 750 | 870 | 870 |
| Weight | | | | |
| Masa całkowita (kg) | | 315 | 320 | 330 |
| Waga i wymiary | | | | |
| Wysokość całkowita (mm) | h17 | 600 | 600 | 600 |
| Szerokość (mm) | | 1880 | 2140 | 2140 |
| Głębokość (mm) | p5 | 1100 | 1100 | 1100 |
| Parametry robocze | | | | |
| Wyposażenie maszyny | | ✗ | ✗ | ✗ |
| Rura elastyczna | | Nie | Nie | Nie |

| Kompatybilność maszyn | | BD 1880 / 750 | BD 2140 / 870 (a) | BD 2140 / 870 (b) |
|-----------------------|--|---------------|-------------------|-------------------|
| All-Tach® | | N51502073 | N700246 | N51502032 |
| 2150RT | | - | - | X |
| 2600R | | X | - | - |
| 2750V | | X | - | - |
| 2750VT | | - | - | X |
| 3300V NXT2 | | X | X | - |
| 4200V | | - | X | - |
| R260 | | X | - | - |
| RT215 | | - | - | X |
| V275 - NEW | | X | - | - |
| V330 GEN:2 | | X | X | - |
| V330 GEN:2 | | X | X | - |
| VT275 - NEW | | - | - | X |

| TABELA SYMBOLI | | | | | |
|--|---------------------------------|--|-------------------------|--|---|
|  | Nie jest wymagana predyspozycja |  | Przewód hydrauliczny |  | Powrót oleju hydraulicznego do zbiornika |
|  | Predyspozycja elektryczna |  | Predyspozycja platformy |  | Predyspozycja zacisków opon, zacisków cylindrów |



GEHL®

Siège Social
P.O. Box 179 - One Gehl Way - West Bend, WI, USA 53095
Tel: (262) 334-9461 - Fax: (262) 338-7517
www.gehl.com



This brochure describes versions and configuration options for Gehl products which may be fitted with different equipment. The equipment described in this brochure may be standard, optional or not available depending on version. Gehl reserves the right to change the specifications shown and described at any time and without prior warning. The manufacturer is not liable for the specifications given. For more information, contact your Gehl dealer. Non-contractual document. Product descriptions may differ from actual products. List of specifications is not comprehensive. The logos and visual identity of the company are the property of Gehl and may not be used without authorization. All rights reserved. The photos and diagrams contained in this brochure are provided for information only.

MANITOU EQUIPMENT AMERICAS, LLC - Limited company with board of directors - Share capital: 39,668,399 euros - 857 802 508 RCS West Bend