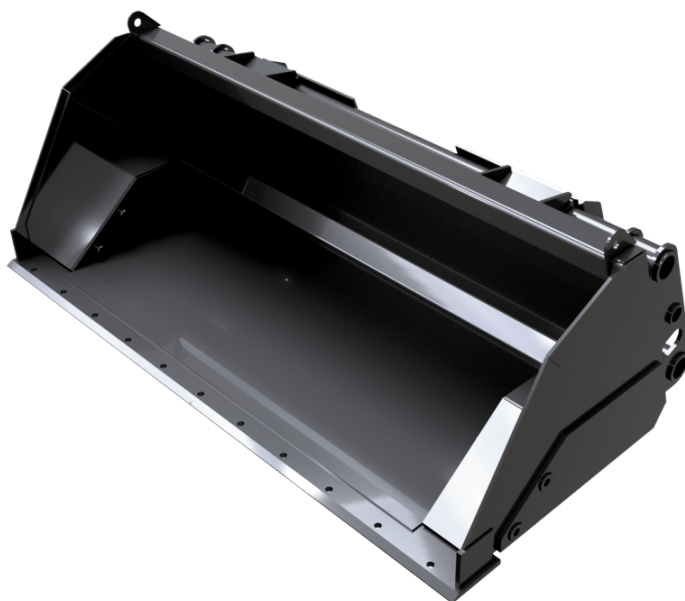


Technical sheet :

# **HIGH TIP BUCKET (COMPACT MACHINES)**

---




---

## **Customer benefits**







- Noticeably increases the machine's lifting height (+ 800 mm / 31 in or more).
- Improves the efficiency of truck/container loading applications.

## **Technical characteristics**

- For materials with a density < 1,8 t/m<sup>3</sup> / 112 lb/ft<sup>3</sup>.

Capacities		BHS 1525 / 550
Capacity (kg)		990
Heaped capacity (l)		550
Weight		
Overall weight (kg)		340
Weight and dimensions		
Overall height (mm)	h17	643
Width (mm)		1525
Depth (mm)	p5	970
Working Parameters		
Required machine equipment		

Machines compatibility	BHS 1525 / 550
All-Tach®	N004050
AL650	X
AL750	X
MLA 6-65 H-Z	X
MLA 4-50 H <span>OLD</span>	X

TABLE SYMBOL					
	No predisposition required		Hydraulic line		Return piping to hydraulic oil tank
	Electric predisposition		Platform predisposition		Tyre handler, cylinder handler predisposition



**Head Office**

B.P. 249 - 430 rue de l'Aubinière

44150 Ancenis Cedex - France

Tel: +33 (0)2 40 09 10 11 - Fax: +33 (0)2 40 09 10 97

[www.manitou.com](http://www.manitou.com)



This publication provides a description of the configuration versions and options for Manitou products, which may differ for equipment. The equipment presented in this brochure may be part of a series, as an option, or it may not be available, depending on the versions. Manitou reserves the right, at any time and without notice, to amend the specifications described and represented. The specifications provided do not bind the manufacturer. For more details, please contact your Manitou agent. This is not a contractually binding document. The presentation of the products is not contractually binding. List of specifications non-exhaustive. The logos as well as the visual identity of the company are owned by Manitou and cannot be used without authorisation. All rights reserved. The photos and diagrams contained in this brochure are only provided for consultation and information purposes.

MANITOU BF SA - Limited company with board of directors - Share capital: 39,668,399 euros - 857 802 508 RCS Nantes