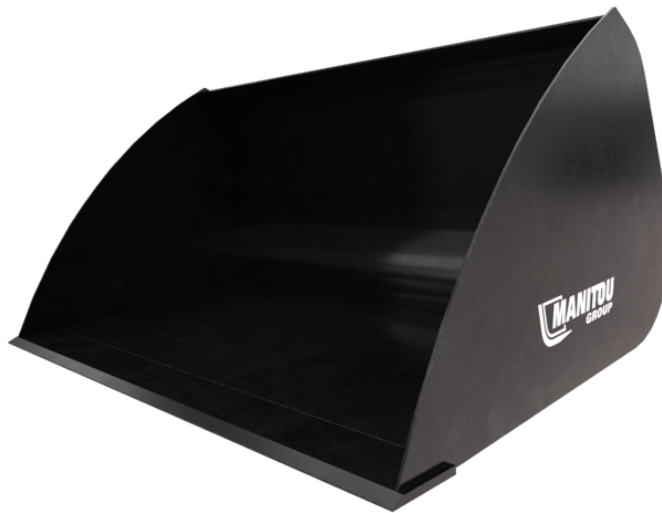


Technical sheet :

LIGHT MATERIAL BUCKET



Customer benefits

- High capacity for efficient loading applications.

Technical characteristics






- Suited for bulk materials with a density $< 0.8 \text{ t/m}^3$ / 50 lb/ft^3 .
- 400 HB cutting edge for more resistance.

[The 3D picture at the top of this page is the reference BLM 1500 / 770 - 52706270].

 **ATTACHMENTS**

Technical characteristics		BLM 1500 / 770
Distance to center of gravity (mm)		481
Capacities		
Capacity (kg)		610
Heaped capacity (l)		763
Struck capacity (l)		613
Weight		
Overall weight (kg)		209
Weight and dimensions		
Overall height (mm)	h17	775
Overall length (mm)	l1	1218
Width (mm)		1500
Working Parameters		
Required machine equipment		✕

Machines compatibility	BLM 1500 / 770
All-Tach®	52706270
4 point Carriage	52723640
Euro Carriage	52723641
AL530	X
GCT 3-14	X
GCT 3-14 +	X
MLA 5-50 H	X
ULM 412 H	X
ULM 412 H	X
ULM 415 H	X
ULM 415 H	X

TABLE SYMBOL					
✕	No predisposition required		Hydraulic line		Return piping to hydraulic oil tank
	Electric predisposition		Platform predisposition		Tyre handler, cylinder handler predisposition



Head Office

B.P. 249 - 430 rue de l'Aubinière

44150 Ancenis Cedex - France

Tel: +33 (0)2 40 09 10 11 - Fax: +33 (0)2 40 09 10 97

www.manitou.com



This publication provides a description of the configuration versions and options for Manitou products, which may differ for equipment. The equipment presented in this brochure may be part of a series, as an option, or it may not be available, depending on the versions. Manitou reserves the right, at any time and without notice, to amend the specifications described and represented. The specifications provided do not bind the manufacturer. For more details, please contact your Manitou agent. This is not a contractually binding document. The presentation of the products is not contractually binding. List of specifications non-exhaustive. The logos as well as the visual identity of the company are owned by Manitou and cannot be used without authorisation. All rights reserved. The photos and diagrams contained in this brochure are only provided for consultation and information purposes.

MANITOU BF SA - Limited company with board of directors - Share capital: 39,668,399 euros - 857 802 508 RCS Nantes