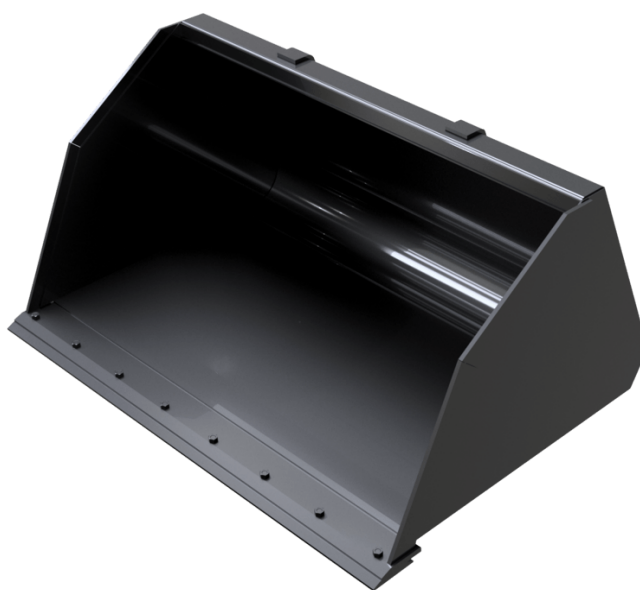


Technical sheet :

LIGHT MATERIAL BUCKET WITH WEAR PLATE (COMPACT MACHINES)



Customer benefits

- Wide range of bucket capacities.
- High capacities for efficient loading applications.

Technical characteristics

- Suited for bulk materials with a density < 1t/m³.
- 400HB cutting edge for more resistance.

Capacities		BLM WP 1650 / 1100	BLM WP 1800 / 1200	BLM WP 1950 / 1300	BLM WP 2150 / 1420
Capacity (kg)		1100	1200	1300	1420
Heaped capacity (l)		1100	1200	1300	1420
Weight					
Overall weight (kg)		342	365	387	417
Weight and dimensions					
Overall height (mm)	h17	810	810	810	810
Width (mm)		1650	1800	1950	2150
Depth (mm)	p5	1271	1271	1271	1271
Working Parameters					
Machine Equipment		×	×	×	×

Machines compatibility	BLM WP 1650 / 1100	BLM WP 1800 / 1200	BLM WP 1950 / 1300	BLM WP 2150 / 1420
All-Tach®	N51502533	N51502532	N51502531	N51502530
4 point Camrage	N51502604	N51502606	N51502608	N51502610
Euro Carriage	N51502563	N51502565	N51502567	N51502569
AL650	X	X	X	-
AL750	X	X	X	X
ALT750	X	X	X	X
MLA 6-65 H-Z	X	X	X	-
MLA-T 516-75 H	X	X	X	X
ALT750 OLD	X	X	X	X
ALT750 OLD	X	X	X	X

TABLE SYMBOL					
	No predisposition required		Hydraulic line		Return piping to hydraulic oil tank
	Electric predisposition		Platform predisposition		Tyre handler, cylinder handler predisposition



Head Office

B.P. 249 - 430 rue de l'Aubinière

44150 Ancenis Cedex - France

Tel: +33 (0)2 40 09 10 11 - Fax: +33 (0)2 40 09 10 97

www.manitou.com



This publication provides a description of the configuration versions and options for Manitou products, which may differ for equipment. The equipment presented in this brochure may be part of a series, as an option, or it may not be available, depending on the versions. Manitou reserves the right, at any time and without notice, to amend the specifications described and represented. The specifications provided do not bind the manufacturer. For more details, please contact your Manitou agent. This is not a contractually binding document. The presentation of the products is not contractually binding. List of specifications non-exhaustive. The logos as well as the visual identity of the company are owned by Manitou and cannot be used without authorisation. All rights reserved. The photos and diagrams contained in this brochure are only provided for consultation and information purposes.

MANITOU BF SA - Limited company with board of directors - Share capital: 39,668,399 euros - 857 802 508 RCS Nantes