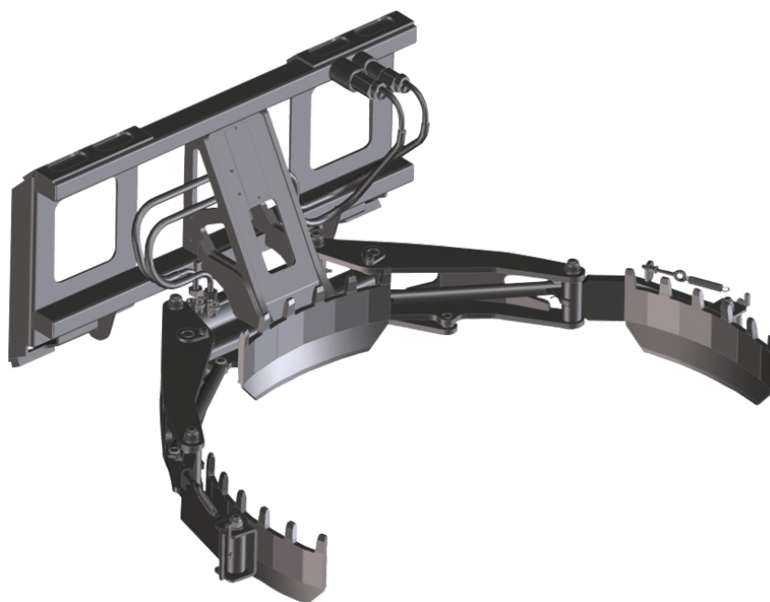


POT CLAMP (COMPACT MACHINES)

CLAMPS



GEHL®


Customer benefits

- Makes the handling of pots and plants easy and efficient.
- Efficiently replaces forks, jibs or human strength.







Technical characteristics

- Articulated handles for a smooth pot clamping.
- Adjustable pressure limiter to prevent from damaging fragile pots (terracotta).

MANITOU
GROUP ATTACHMENTS

Technical characteristics		CLP 1000 / 800	
Distance to center of gravity (mm)		350	
Capacities			
Capacity (kg)		800	
Weight			
Overall weight (kg)		109	
Weight and dimensions			
Overall height (mm)	h17	507	
Overall length (mm)	l1	1106	
Width (mm)		686	
Diameter minimum / Diameter maximum (mm)		400 / 1050	
Working Parameters			
Machine Equipment			
Opening minimum (mm)		400	
Opening maximum (mm)		1000	

Compatibilité machine		CLP 1000 / 800	
All-Tach® Narrow		N51502717	
All-Tach®		N51502716	
4 point Carriage		52742066	
Euro Carriage		52742067	
AL230		X	
AL320		X	
AL330		X	
AL420		X	
AL430		X	
AL530		X	
AL650		X	
AL750		X	
GCT 3-14		X	
GCT 3-14 +		X	
MLA 2-25 H		X	
MLA 3-25 H		X	
MLA 3-25 H-C		X	
MLA 4-50 H		X	
MLA 4-50 H-C		X	
MLA 5-50 H		X	
MLA 6-65 H-Z		X	
ULM 412 H		X	
ULM 412 H		X	
ULM 415 H		X	
ULM 415 H		X	
MLA 1-25 H OLD		X	
MLA 3-35 H OLD		X	
MLA 4-50 H OLD		X	

TABLEAU DES SYMBOLES					
	Aucune prédisposition requise		Ligne hydraulique en tête de flèche		Retour hydraulique au réservoir
	Prédisposition électrique		Prédisposition nacelle		Prédisposition pinces à pneus, pinces à vérins



GEHL®

Siège Social
P.O. Box 179 - One Gehl Way - West Bend, WI, USA 53095
Tel: (262) 334-9461 - Fax: (262) 338-7517
www.gehl.com



This brochure describes versions and configuration options for Gehl products which may be fitted with different equipment. The equipment described in this brochure may be standard, optional or not available depending on version. Gehl reserves the right to change the specifications shown and described at any time and without prior warning. The manufacturer is not liable for the specifications given. For more information, contact your Gehl dealer. Non-contractual document. Product descriptions may differ from actual products. List of specifications is not comprehensive. The logos and visual identity of the company are the property of Gehl and may not be used without authorization. All rights reserved. The photos and diagrams contained in this brochure are provided for information only.

MANITOU EQUIPMENT AMERICAS, LLC - Limited company with board of directors - Share capital: 39,668,399 euros - 857 802 508 RCS West Bend