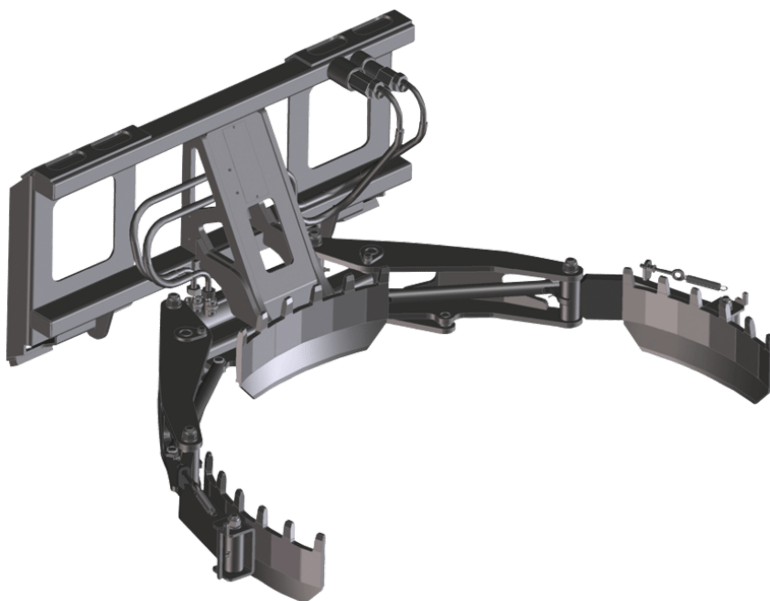


Technical sheet :

POT CLAMP (COMPACT MACHINES)




Customer benefits







- Makes the handling of pots and plants easy and efficient.
- Efficiently replaces forks, jibs or human strength.

Technical characteristics

- Articulated handles for a smooth pot clamping.
- Adjustable pressure limiter to prevent from damaging fragile pots (terracotta).

Technical characteristics		CLP 1000 / 800	
Distance to center of gravity (mm)		350	
Capacities			
Capacity (kg)		800	
Weight			
Overall weight (kg)		109	
Weight and dimensions			
Overall height (mm)	h17	507	
Overall length (mm)	l1	1106	
Width (mm)		686	
Diameter minimum / Diameter maximum (mm)		400 / 1050	
Working Parameters			
Machine Equipment			
Opening minimum (mm)		400	
Opening maximum (mm)		1000	

Machines compatibility		CLP 1000 / 800	
All-Tach® Narrow		N51502717	
All-Tach®		N51502716	
4 point Camiage		52742066	
Euro Camiage		52742067	
AL230		X	
AL320		X	
AL330		X	
AL420		X	
AL430		X	
AL530		X	
AL650		X	
AL750		X	
GCT 3-14		X	
GCT 3-14 +		X	
MLA 2-25 H		X	
MLA 3-25 H		X	
MLA 3-25 H-C		X	
MLA 4-50 H		X	
MLA 4-50 H-C		X	
MLA 5-50 H		X	
MLA 6-65 H-Z		X	
ULM 412 H		X	
ULM 412 H		X	
ULM 415 H		X	
ULM 415 H		X	
MLA 1-25 H OLD		X	
MLA 3-35 H OLD		X	
MLA 4-50 H OLD		X	

TABLE SYMBOL					
	No predisposition required		Hydraulic line		Return piping to hydraulic oil tank
	Electric predisposition		Platform predisposition		Tyre handler, cylinder handler predisposition



Head Office

B.P. 249 - 430 rue de l'Aubinière

44150 Ancenis Cedex - France

Tel: +33 (0)2 40 09 10 11 - Fax: +33 (0)2 40 09 10 97

www.manitou.com



This publication provides a description of the configuration versions and options for Manitou products, which may differ for equipment. The equipment presented in this brochure may be part of a series, as an option, or it may not be available, depending on the versions. Manitou reserves the right, at any time and without notice, to amend the specifications described and represented. The specifications provided do not bind the manufacturer. For more details, please contact your Manitou agent. This is not a contractually binding document. The presentation of the products is not contractually binding. List of specifications non-exhaustive. The logos as well as the visual identity of the company are owned by Manitou and cannot be used without authorisation. All rights reserved. The photos and diagrams contained in this brochure are only provided for consultation and information purposes.

MANITOU BF SA - Limited company with board of directors - Share capital: 39,668,399 euros - 857 802 508 RCS Nantes