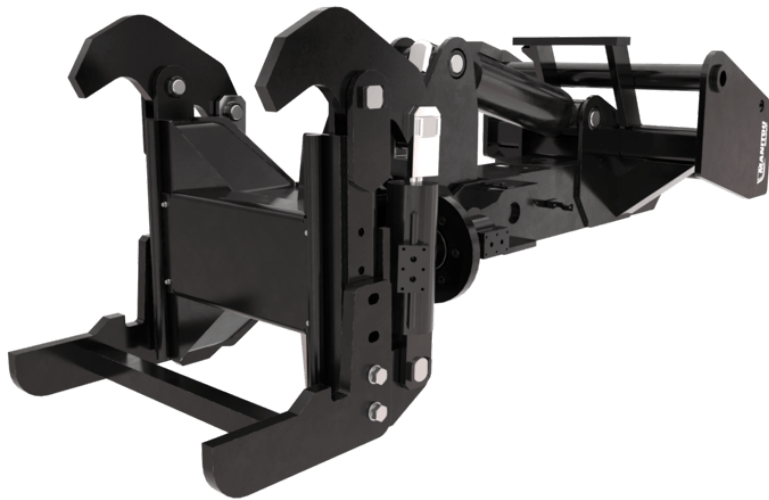
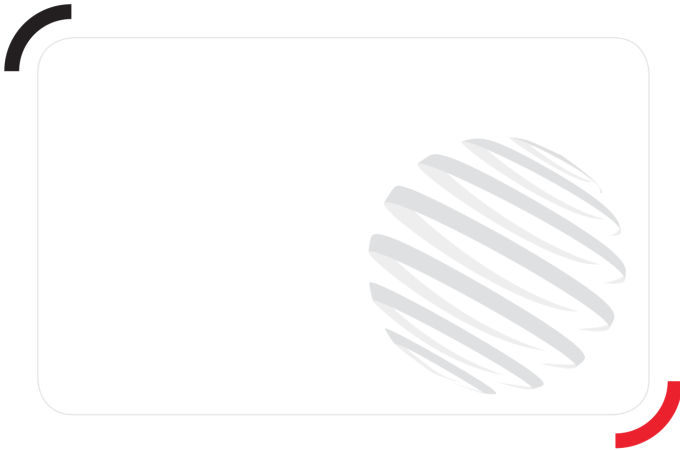


RIB HANDLING CLAMP



-
- THE clamp for all rib handlings & placements.
 - Efficient & accurate rib placement.
 - Safety: prevents from suspending ribs on forks or hooks.
 - To be controlled from the machine's cab or with a remote control.
 - Note: rib placement with a vertical attachment only. Ribs can be grabbed on the ground using the machine's titling.
 - Capacity 4000 kg.
 - 45° hydraulic arm movement.
 - 65°/65° manual head rotation.
 - Wide hydraulic clamp opening: up to 480 mm.
 - MRT Vision/ Vision+: no machine equipment required.
 - MRT Vision/ Vision+: adaptation plug required to use and older model on the machines. Contact the spare part department.
- [The 3D picture at the top of this page is the reference CLR 4000 - 52721819].



 **MANITOU**
HANDLING YOUR WORLD

