

Technical sheet :

# 160 ATJ+



 **MANITOU**  
HANDLING YOUR WORLD

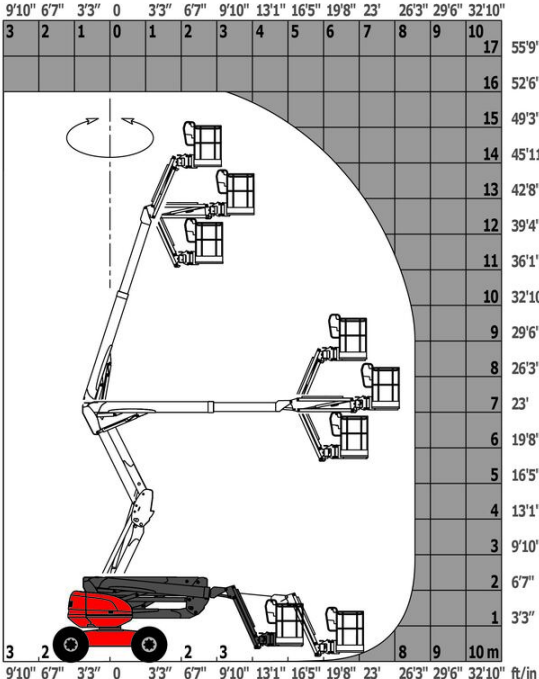
| Capacities                              |         | Metric                                                                                                         |
|-----------------------------------------|---------|----------------------------------------------------------------------------------------------------------------|
| Working height                          | h21     | 16.21 m                                                                                                        |
| Platform height                         | h7      | 14.21 m                                                                                                        |
| Max. outreach                           |         | 8.52 m                                                                                                         |
| Overhang                                |         | 7.59 m                                                                                                         |
| Pendular arm rotation (top / bottom)    |         | +66.50 ° / -65.80 °                                                                                            |
| Platform capacity                       | Q       | 408 kg                                                                                                         |
| Turret rotation                         |         | 350 °                                                                                                          |
| Platform rotation (right / left)        |         | 90 ° / 90 °                                                                                                    |
| Number of people (indoor / outdoor)     |         | 3 / 3                                                                                                          |
| Weight and dimensions                   |         |                                                                                                                |
| Platform weight*                        |         | 7500 kg                                                                                                        |
| Platform dimensions (length x width)    | lp / ep | 2.30 m x 0.90 m                                                                                                |
| Floor height (access)                   | h20     | 0.38 m                                                                                                         |
| Overall length                          | l1      | 7.09 m                                                                                                         |
| Overall width                           | b1      | 2.45 m                                                                                                         |
| Overall height                          | h17     | 2.47 m                                                                                                         |
| Overall length (stowed)                 | l9      | 4.89 m                                                                                                         |
| Overall height (stowed)                 | h18 *** | 2.94 m                                                                                                         |
| Counterweight offset (turret at 90°)    | a7      | 0.15 m                                                                                                         |
| External turning radius                 | Wa3     | 4.09 m                                                                                                         |
| Ground clearance at centre of wheelbase | m2      | 0.40 m                                                                                                         |
| Wheelbase                               | y       | 2.20 m                                                                                                         |
| Performances                            |         |                                                                                                                |
| Drive speed - stowed                    |         | 5 km/h                                                                                                         |
| Drive speed - raised                    |         | 1 km/h                                                                                                         |
| Gradeability                            |         | 45 %                                                                                                           |
| Permissible leveling                    |         | 5 °                                                                                                            |
| Wheels                                  |         |                                                                                                                |
| Tires type                              |         | Foam-filled                                                                                                    |
| Standard tires                          |         | 914 x 370 mm                                                                                                   |
| Drive wheels (front / rear)             |         | 2 / 2                                                                                                          |
| Steering wheels (front / rear)          |         | 2 / 2                                                                                                          |
| Braking wheels (front / rear)           |         | 0 / 2                                                                                                          |
| Engine/Battery                          |         |                                                                                                                |
| Engine brand / model                    |         | Kubota - D1105-E4B                                                                                             |
| Engine nom                              |         | Stage V                                                                                                        |
| I.C. Engine power rating / Power        |         | 24.80 Hp / 18.50 kW                                                                                            |
| Miscellaneous                           |         |                                                                                                                |
| Ground Pressure                         |         | 11.50 dan/cm2                                                                                                  |
| Hydraulic Pressure                      |         | 340 bar                                                                                                        |
| Hydraulic tank capacity                 |         | 53 l                                                                                                           |
| Fuel tank                               |         | 51 l                                                                                                           |
| Noise to environment (LWA)              |         | < 105 dB                                                                                                       |
| Vibration on hands/arms                 |         | < 0.50 m/s <sup>2</sup>                                                                                        |
| Daily consumption **                    |         | 7 l                                                                                                            |
| Standards compliance                    |         |                                                                                                                |
| This machine is in compliance with:     |         | European directives: 2006/42/EC- Machinery (revised EN280:2013) - 2004/108/EC (EMC) - 2006/95/EC (Low voltage) |

\*Varies according to options and standards of the country to which the machine is delivered

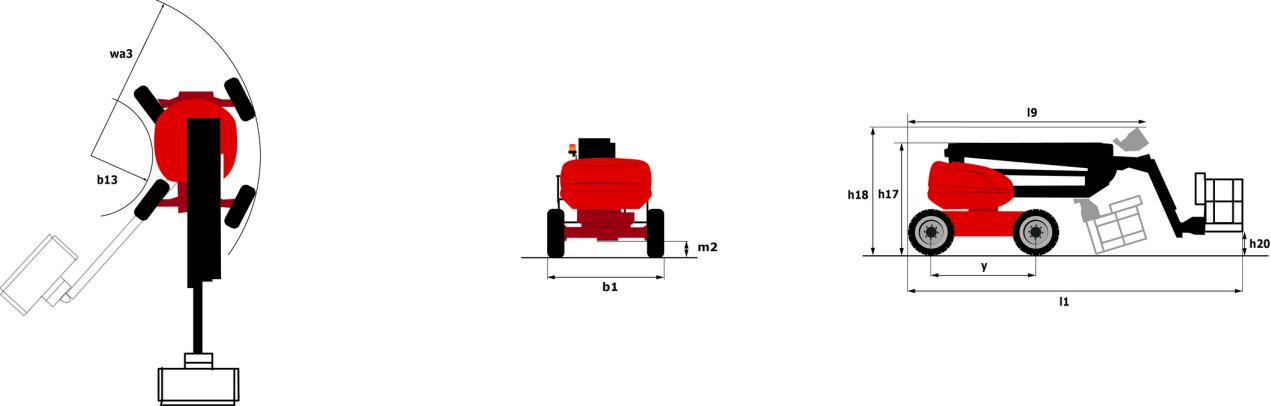
\*\* According to "REDUCE cycle"

# 160 ATJ+ - Load chart

## Load Chart for MEWP Metric



# 160 ATJ+ - Dimensional drawing



# Equipment

## Standard

230V Predisposition  
 4 simultaneous movements  
 4 wheel drive  
 4 wheel steer with crab mode  
 Audible alarm and illuminated indicator lamp (leveling, overload, lowering)  
 Backup electrical pump  
 CAN bus technology  
 Connected machine  
 Dead man pedal  
 Differential locking on rear axle  
 Easy fast slinging system  
 Front axle with limited slip  
 Fuel gauge with low level indicator  
 Horn in the platform  
 Hour meter  
 Integrated diagnostic assistance  
 LED rotating beacon  
 Large basket with three entries  
 Large color screen on turret  
 Leveling unlocking  
 Management via engine speed bearing  
 Oscillating front axle  
 Stop & Go system

## Optional

230V socket with circuit-breaker on boom head  
 Additional storage boxes  
 Battery blanket  
 Battery charger automatic start  
 Biodegradable hydraulic oil - Grade 32  
 Coded anti-start  
 Continuous turret rotation  
 Fuel tank locking cap  
 High capacity starting battery  
 Hydraulic oil heater  
 Key lock on turret cover  
 Large basket 2.30m with lateral door  
 Lockable fuel cap  
 Non-marking tyres  
 On-board generator (3,5 or 5 kW)  
 Painted narrow basket for heavy loads 1800mm (5 ft 11 in.)  
 Panel cradle  
 Personalized paintwork  
 Pipe cradle  
 Protection screen and key lock turret  
 Safety kit - Harness + helmet  
 Safety valve  
 Secondary Protection System (SPS)  
 Socket 230 V + differential circuit breaker  
 Spark arresting muffler  
 Water heater  
 Water predisposition  
 Working light



**Head Office**

B.P. 249 - 430 rue de l'Aubinière

44150 Ancenis Cedex - France

Tel: +33 (0)2 40 09 10 11 - Fax: +33 (0)2 40 09 10 97

[www.manitou.com](http://www.manitou.com)



This publication provides a description of the configuration versions and options for Manitou products, which may differ for equipment. The equipment presented in this brochure may be part of a series, as an option, or it may not be available, depending on the versions. Manitou reserves the right, at any time and without notice, to amend the specifications described and represented. The specifications provided do not bind the manufacturer. For more details, please contact your Manitou agent. This is not a contractually binding document. The presentation of the products is not contractually binding. List of specifications non-exhaustive. The logos as well as the visual identity of the company are owned by Manitou and cannot be used without authorisation. All rights reserved. The photos and diagrams contained in this brochure are only provided for consultation and information purposes.

MANITOU BF SA - Limited company with board of directors - Share capital: 39,668,399 euros - 857 802 508 RCS Nantes