

TH12-55 - NEW

TH



*Specifications subject to change

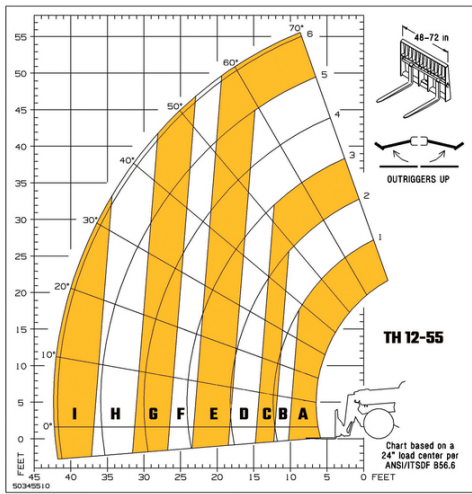
GEHL®

Capacities		Metric	Imperial
Max. capacity		5443.10 kg	12000 lb
Max. lifting height		16.95 m	55 ft 7 in
Max. outreach		12.88 m	42 ft 3 in
Weight and dimensions			
Overall length to carriage	l11	6.40 m	21 ft
Overall length (with forks)	l1	7.62 m	25 ft
Overall width	b1	2.54 m	8 ft 4 in
Overall height	h17	2.59 m	8 ft 6 in
Wheelbase	y	3.50 m	11 ft 6 in
Ground clearance	m4	0.48 m	1 ft 7 in
Overall cab width	b4	0.95 m	3 ft 1 in
Tilt-up angle	a4	34 °	34 °
Tilt-down angle	a5	96 °	96 °
External turning radius	Wa3	3.88 m	12 ft 9 in
Overall weight		14696 kg	32399 lb
Tires type		Pneumatic	Pneumatic
Forks length / width / section	l / e / s	1219 mm x 152 mm x 63.50 mm	48 in x 6 in x 2 in
Frame leveling longitudinal +/-		10 °	10 °
Performances			
Lifting		16 s	16 s
Lowering		11 s	11 s
Extension		18 s	18 s
Retraction		16 s	16 s
Crowd		4 s	4 s
Dump		6 s	6 s
Engine			
Engine brand		Deutz	Deutz
Engine norm		Tier 4 final	Tier 4 final
Engine model		TCD 3.6 L4	TCD 3.6 L4
Number of cylinders / Capacity of cylinders		4 - 3600 cm ³	4 - 220 in ³
I.C. Engine power rating - Power		127 Hp / 95 kW	127 Hp / 95 kW
Max. torque / Engine rotation		500 Nm @ 2300 rpm	369 ft/lbs @ 2300 rpm
Transmission			
Transmission type		Powershift	Powershift
Number of gears (forward / reverse)		5 / 3	5 / 3
Max. travel speed		32 km/h	20 mph
Parking brake		Hydraulic spring release SAHR	Hydraulic spring release SAHR
Service brake		Wet disc brakes	Wet disc brakes
Hydraulics			
Hydraulic pump type		Axial piston	Axial piston
Hydraulic flow / Pressure		151 l/min-275.80 bar	40 US gpm-4000 PSI
Tank capacities			
Engine oil		8.51 l	2 US gal
Hydraulic oil		159 l	42 US gal
Fuel tank		144 l	38 US gal
DEF tank capacity		15.14 l	4 US gal
Noise and vibration			
Noise at driving position (LpA)		80 dB	80 dB
Miscellaneous			
Steering wheels (front / rear)		2 / 2	2 / 2
Drive wheels (front / rear)		2 / 2	2 / 2
Controls		Joystick	Joystick

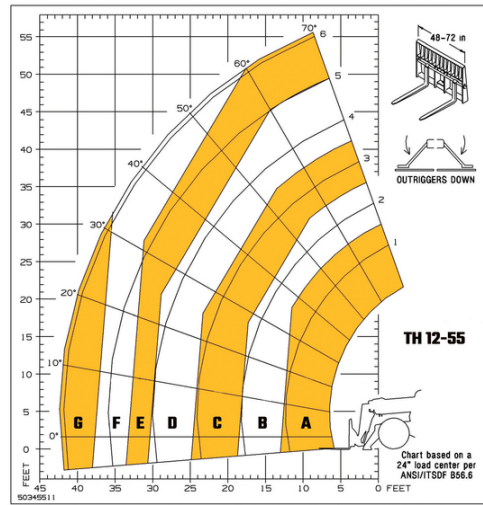
TH12-55 - NEW - Load chart

Machine on tyres with forks Imperial

Machine on lowered stabilisers with forks Imperial



- A** 12,000 lbs
- B** 10,000 lbs
- C** 8,000 lbs
- D** 6,000 lbs
- E** 4,000 lbs
- F** 3,000 lbs
- G** 2,000 lbs
- H** 1,000 lbs
- I** 500 lbs



- A** 12,000 lbs
- B** 10,000 lbs
- C** 8,000 lbs
- D** 6,000 lbs
- E** 5,000 lbs
- F** 4,000 lbs
- G** 3,500 lbs



GEHL®

Siège Social
P.O. Box 179 - One Gehl Way - West Bend, WI, USA 53095
Tel: (262) 334-9461 - Fax: (262) 338-7517
www.gehl.com



This brochure describes versions and configuration options for Gehl products which may be fitted with different equipment. The equipment described in this brochure may be standard, optional or not available depending on version. Gehl reserves the right to change the specifications shown and described at any time and without prior warning. The manufacturer is not liable for the specifications given. For more information, contact your Gehl dealer. Non-contractual document. Product descriptions may differ from actual products. List of specifications is not comprehensive. The logos and visual identity of the company are the property of Gehl and may not be used without authorization. All rights reserved. The photos and diagrams contained in this brochure are provided for information only.

MANITOU EQUIPMENT AMERICAS, LLC - Limited company with board of directors - Share capital: 39,668,399 euros - 857 802 508 RCS West Bend