

# TH10-55

## CONSTRUCTION TELEHANDLERS



### KEY FEATURES

- ✓ SUPERVIEW cab design for increased line of sight to forks and load
- ✓ Simple F-N-R joystick mounted to the seat for ease of use and operator comfort
- ✓ digital display with 50 operator aid messages to assist in correct operation
- ✓ Auxiliary hydraulics and outriggers are standard
- ✓ high visibility orange seat belt to verify operator use
- ✓ stability system for machine re-position within restricted range

### KEY SPECIFICATIONS

- ✓ 10,000 lbs. (4540 kg) maximum lifting capacity
- ✓ 55' 7" (17 m) maximum lifting height
- ✓ 127 hp (95 kW) Deutz diesel engine

		METRIC	IMPERIAL
CAPACITIES	Max. capacity	4535.92 kg	10000 lb
	Max. lifting height	16.95 m	55 ft 7 in
	Maximum outreach	12.88 m	42 ft 3 in
WEIGHT AND DIMENSIONS	Overall length to carriage	6.40 m	21 ft
	Overall length (with forks)	7.62 m	25 ft
	Overall width	2.54 m	8 ft 4 in
	Overall height	2.59 m	8 ft 6 in
	Wheelbase	3.50 m	11 ft 6 in
	Ground clearance	0.48 m	1 ft 7 in
	Overall cab width	0.95 m	3 ft 1 in
	Tilt-up angle	34 °	
	Tilt-down angle	96 °	
	External turning radius	3.88 m	12 ft 9 in
	Overall weight	13744 kg	30300 lb
	Tires type	Pneumatic	
	Forks length / width / section	1219 mm x 127 mm x 50.80 mm	48 in x 5 in x 2 in
PERFORMANCES	Frame leveling longitudinal +/-	10 °	
	Lifting	16 s	
	Lowering	11 s	
	Extension	18 s	
	Retraction	16 s	
	Crowd	4 s	
	Dump	6 s	
	Engine brand	Deutz	
	Engine norm	Tier 4 final	
ENGINE	Engine model	TCD 3.6 L4	
	Number of cylinders / Capacity of cylinders	4 - 3600 cm³	4 - 220 in³
	Engine power (Hp/kW)	127 Hp / 95 kW	
	Max. torque / Engine rotation	500 Nm @ 2300 rpm	369 ft/lbs @ 2300 rpm
	Transmission type	Powershift	
TRANSMISSION	Number of gears (forward / reverse)	5 / 3	
	Max. travel speed	32 km/h	20 mph
	Parking brake	Hydraulic spring release SAHR	
	Service brake	Wet disc brakes	
	Hydraulic pump type	Axial piston	
HYDRAULICS	Hydraulic flow / Pressure	151 l/min-275.80 bar	40 US gpm-4000 PSI
	Engine oil	8.51 l	2 US gal
TANK CAPACITIES	Hydraulic oil	159 l	42 US gal
	Diesel Exhaust fluid (AdBlue® type)	15.14 l	4 US gal
	Fuel	144 l	38 US gal
	Noise at driving position (LpA)	80 dB	
MISCELLANEOUS	Steering wheels (front / rear)	2 / 2	
	Drive wheels (front / rear)	2 / 2	
	Controls	Joystick	

GEHL Company reminds users to read and understand the operator's manual before operating any equipment. Also, make sure all safety devices and shields are in place and functioning properly. GEHL reserves the right to add improvements or make changes in specifications at any time without notice or obligation.

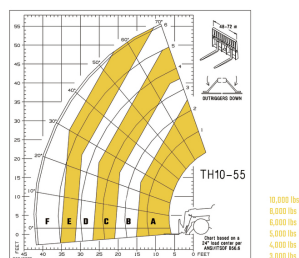
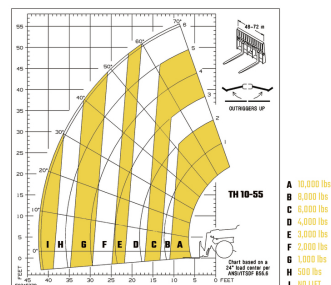


## STANDARD FEATURES

- Front Outriggers
- Rear Axle Stabilization
- Boom Tip Lift Hook
- Four Wheel Drive
- Crab mode
- Easy Manager
- 12Volt Power Port
- Back-Up Alarm
- Wet disc brakes
- Self-Leveling Forks
- Engine Block Heater
- Multi-Function Display Screen
- 12 Volt Battery

## OPTIONAL FEATURES

- A/C Cabin
- Suspension Seat
- Cabin with Heat
- Work Lights - Front and Rear



One Gehl Way, West Bend, WI 53095  
Phone: (262) 334-9461



GEHL COMPACT EQUIPMENT