

# TH8-42

## CONSTRUCTION TELEHANDLERS



### KEY FEATURES

- ✓ SUPERVIEW cab design for increased line of sight to forks and load
- ✓ Simple F-N-R joystick mounted to the seat for ease of use and operator comfort
- ✓ EASY STEP cab floor allows for clear visibility of the step for exit and entry
- ✓ digital display with 50 operator aid messages to assist in correct operation
- ✓ high visibility orange seat belt to verify operator use
- ✓ stability system for machine re-position within restricted range

### KEY SPECIFICATIONS

- ✓ 8,000 lbs. (3629 kg) maximum lifting capacity
- ✓ 42' 6" (13 m) maximum lifting height
- ✓ 127 hp (95 kW) Deutz diesel engine

		METRIC	IMPERIAL
CAPACITIES	Max. capacity	3628.70 kg	8000 lb
	Max. lifting height	12.96 m	42 ft 6 in
	Maximum outreach	8.69 m	28 ft 6 in
WEIGHT AND DIMENSIONS	Overall length to carriage	6.30 m	20 ft 8 in
	Overall length (with forks)	7.51 m	24 ft 8 in
	Overall width	2.48 m	8 ft 2 in
	Overall height	2.44 m	8 ft
	Wheelbase	3.50 m	11 ft 6 in
	Ground clearance	0.46 m	1 ft 6 in
	Overall cab width	0.95 m	3 ft 1 in
	Tilt-up angle	34 °	
	Tilt-down angle	96 °	
	External turning radius	4.01 m	13 ft 2 in
	Overall weight	10864 kg	23951 lb
	Tires type	Pneumatic	
	Forks length / width / section	1219 mm x 101 mm x 50.80 mm	48 in x 4 in x 2 in
PERFORMANCES	Frame leveling longitudinal +/-	10 °	
	Frame leveling corrector	10 °	
	Lifting	11 s	
	Lowering	6 s	
	Extension	17 s	
	Retraction	11 s	
	Crowd	4 s	
ENGINE	Dump	6 s	
	Engine brand	Deutz	
	Engine norm	Tier 4 final	
	Engine model	TCD 3.6 L4	
	Number of cylinders / Capacity of cylinders	4 - 3600 cm³	4 - 220 in³
TRANSMISSION	Engine power (Hp/kW)	127 Hp / 95 kW	
	Max. torque / Engine rotation	500 Nm @ 2300 rpm	369 ft/lbs @ 2300 rpm
	Transmission type	Powershift	
HYDRAULICS	Number of gears (forward / reverse)	5 / 3	
	Max. travel speed	34.60 km/h	21 mph
	Parking brake	Hydraulic spring release SAHR	
	Service brake	Wet disc brakes	
TANK CAPACITIES	Hydraulic pump type	Axial piston	
	Hydraulic flow / Pressure	151 l/min-275.80 bar	40 US gpm-4000 PSI
NOISE AND VIBRATION	Engine oil	8.51 l	2 US gal
	Hydraulic oil	136.30 l	36 US gal
	Diesel Exhaust fluid (AdBlue® type)	15.14 l	4 US gal
	Fuel	144 l	38 US gal
MISCELLANEOUS	Noise at driving position (LpA)	80 dB	
	Steering wheels (front / rear)	2 / 2	
	Drive wheels (front / rear)	2 / 2	

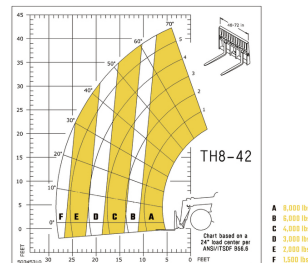


## STANDARD FEATURES

- Easy Manager
- Crab mode
- Four Wheel Drive
- Engine Block Heater
- Boom Tip Lift Hook
- Wet disc brakes
- Self-Leveling Forks
- 12 Volt Battery
- 12Volt Power Port
- Back-Up Alarm
- Rear Axle Stabilization
- Multi-Function Display Screen

## OPTIONAL FEATURES

- Work Lights - Front and Rear
- A/C Cabin
- Suspension Seat
- Cabin with Heat
- Rock Tread - Air Foam Tires



GEHL Company reminds users to read and understand the operator's manual before operating any equipment. Also, make sure all safety devices and shields are in place and functioning properly. GEHL reserves the right to add improvements or make changes in specifications at any time without notice or obligation.



One Gehl Way, West Bend, WI 53095  
Phone: (262) 334-9461



GEHL COMPACT EQUIPMENT