

TH6-42 - NEW

TH



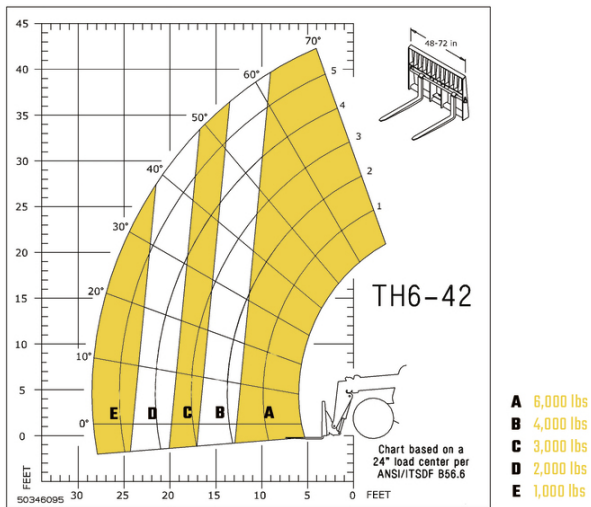
*Specifications subject to change

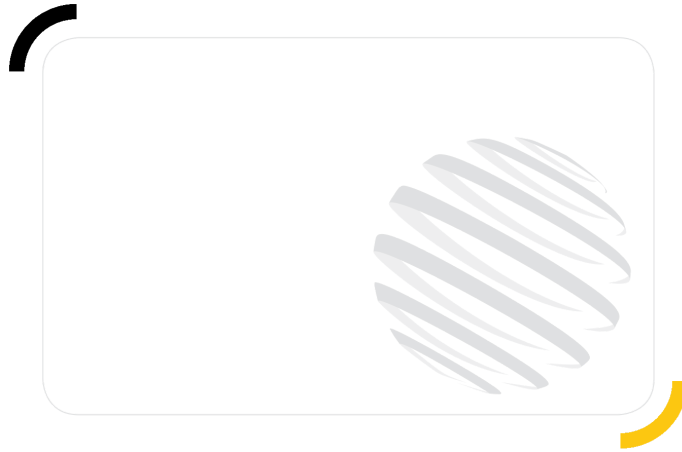
GEHL®

| Capacities | | Metric | Imperial |
|---|-----------|-----------------------------|-------------------------|
| Max. capacity | | 2721.60 kg | 6000 lb |
| Max. lifting height | | 12.96 m | 42 ft 6 in |
| Max. outreach | | 8.69 m | 28 ft 6 in |
| Weight and dimensions | | | |
| Overall length to carriage | l11 | 6.30 m | 20 ft 8 in |
| Overall length (with forks) | l1 | 7.51 m | 24 ft 8 in |
| Overall width | b1 | 2.48 m | 8 ft 2 in |
| Overall height | h17 | 2.44 m | 8 ft |
| Wheelbase | y | 3.50 m | 11 ft 6 in |
| Ground clearance | m4 | 0.46 m | 1 ft 6 in |
| Overall cab width | b4 | 0.95 m | 3 ft 1 in |
| Tilt-up angle | a4 | 34 ° | 34 ° |
| Tilt-down angle | a5 | 96 ° | 96 ° |
| External turning radius | Wa3 | 4 m | 13 ft 1 in |
| Overall weight | | 10365 kg | 22851 lb |
| Tires type | | Pneumatic | Pneumatic |
| Forks length / width / section | l / e / s | 1219 mm x 101 mm / 50.80 mm | 48 in x 4 in / 2 in |
| Frame leveling longitudinal +/- | | 10 ° | 10 ° |
| Performances | | | |
| Lifting | | 11 s | 11 s |
| Lowering | | 6 s | 6 s |
| Extension | | 17 s | 17 s |
| Retraction | | 11 s | 11 s |
| Crowd | | 4 s | 4 s |
| Dump | | 6 s | 6 s |
| Engine | | | |
| Engine brand | | Deutz | Deutz |
| Engine norm | | Tier 4 final | Tier 4 final |
| Engine model | | TCD 3.6 L4 | TCD 3.6 L4 |
| Number of cylinders / Capacity of cylinders | | 4 - 3600 cm ³ | 4 - 220 in ³ |
| I.C. Engine power rating - Power | | 74 Hp / 55 kW | 74 Hp / 55 kW |
| Max. torque / Engine rotation | | 390 Nm @ 2300 rpm | 288 ft/lbs @ 2300 rpm |
| Transmission | | | |
| Transmission type | | Powershift | Powershift |
| Number of gears (forward / reverse) | | 5 / 3 | 5 / 3 |
| Max. travel speed | | 32 km/h | 20 mph |
| Parking brake | | SAHR | SAHR |
| Service brake | | Wet disc brakes | Wet disc brakes |
| Hydraulics | | | |
| Hydraulic pump type | | Axial piston | Axial piston |
| Hydraulic flow / Pressure | | 151 l/min-275.80 bar | 40 US gpm-4000 PSI |
| Tank capacities | | | |
| Engine oil | | 8.51 l | 2 US gal |
| Hydraulic oil | | 136.30 l | 36 US gal |
| Fuel tank | | 144 l | 38 US gal |
| Noise and vibration | | | |
| Noise at driving position (LpA) | | 80 dB | 80 dB |
| Miscellaneous | | | |
| Steering wheels (front / rear) | | 2 / 2 | 2 / 2 |
| Drive wheels (front / rear) | | 2 / 2 | 2 / 2 |

TH6-42 - NEW - Load chart

Machine on tyres with forks Imperial





GEHL®

Siège Social
P.O. Box 179 - One Gehl Way - West Bend, WI, USA 53095
Tel: (262) 334-9461 - Fax: (262) 338-7517
www.gehl.com



This brochure describes versions and configuration options for Gehl products which may be fitted with different equipment. The equipment described in this brochure may be standard, optional or not available depending on version. Gehl reserves the right to change the specifications shown and described at any time and without prior warning. The manufacturer is not liable for the specifications given. For more information, contact your Gehl dealer. Non-contractual document. Product descriptions may differ from actual products. List of specifications is not comprehensive. The logos and visual identity of the company are the property of Gehl and may not be used without authorization. All rights reserved. The photos and diagrams contained in this brochure are provided for information only.

MANITOU EQUIPMENT AMERICAS, LLC - Limited company with board of directors - Share capital: 39,668,399 euros - 857 802 508 RCS West Bend