

TH5-19

TH

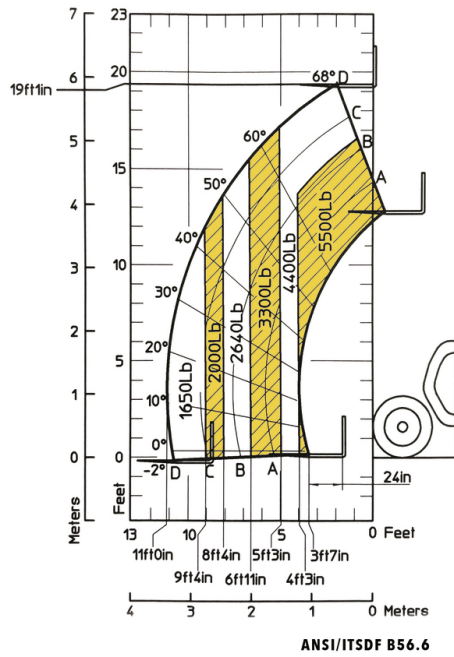


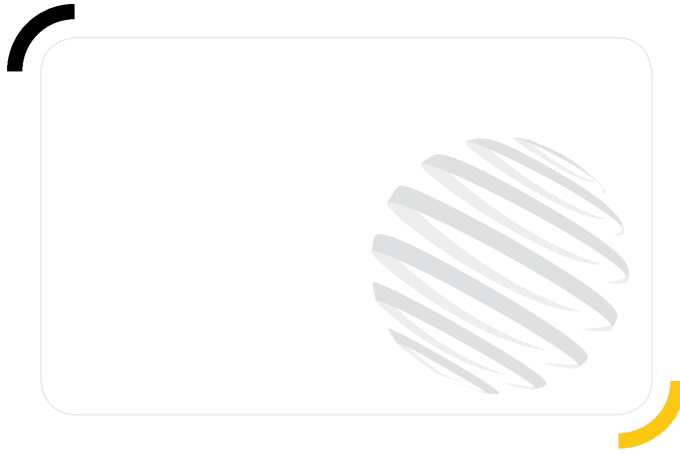
GEHL®

Capacities		Imperial
Max. capacity		5500 lb
Max. lifting height		19 ft 1 in
Max. outreach		11 ft 2 in
Breakout force with bucket		3425.33 daN
Weight and dimensions		
Length to face of forks	l2	12 ft 9 in
Overall width	b1	5 ft 11 in
Overall height	h17	6 ft 4 in
Wheelbase	y	91 in
Ground clearance	m4	13 in
Overall cab width	b4	31 in
Tilt-up angle	a4	12 °
Tilt-down angle	a5	117 °
External turning radius (over tyres)	Wa1	10 ft 10 in
Unladen weight (with forks)		10406 lb
Tires type		Pneumatic
Forks length / width / section	l / e / s	47 in x 5 in x 2 in
Performances		
Lifting		8 s
Lowering		5.40 s
Extension		5.60 s
Retraction		4.30 s
Crowd		3.50 s
Dump		3.60 s
Engine		
Engine brand		Kubota
Engine norm		Tier 4 final
Engine model		V3307-CR-TE5B
Number of cylinders / Capacity of cylinders		4 - 203 in ³
I.C. Engine power rating - Power		74 Hp / 55.40 kW
Max. torque / Engine rotation		1033 ft/lbs @ 2600 rpm
Drawbar pull		3229.40 daN
Electric circuit		
12V Battery capacity		110 Ah
Transmission		
Transmission type		Hydrostatic
Number of gears (forward / reverse)		2 / 2
Max. travel speed		16 mph
Parking brake		Hydraulic spring release SAHR
Service brake		Wet disc brakes
Hydraulics		
Hydraulic pump type		Gear pump
Hydraulic flow / Pressure		23 US gpm-3408 PSI
Tank capacities		
Engine oil		3 US gal
Hydraulic oil		30 US gal
Fuel tank		17 US gal
Miscellaneous		
Steering wheels (front / rear)		2 / 2
Drive wheels (front / rear)		2 / 2
Controls		Joystick

TH5-19 - Load chart

Machine on tires with forks Imperial





GEHL®

Siège Social
P.O. Box 179 - One Gehl Way - West Bend, WI, USA 53095
Tel: (262) 334-9461 - Fax: (262) 338-7517
www.gehl.com



This brochure describes versions and configuration options for Gehl products which may be fitted with different equipment. The equipment described in this brochure may be standard, optional or not available depending on version. Gehl reserves the right to change the specifications shown and described at any time and without prior warning. The manufacturer is not liable for the specifications given. For more information, contact your Gehl dealer. Non-contractual document. Product descriptions may differ from actual products. List of specifications is not comprehensive. The logos and visual identity of the company are the property of Gehl and may not be used without authorization. All rights reserved. The photos and diagrams contained in this brochure are provided for information only.

MANITOU EQUIPMENT AMERICAS, LLC - Limited company with board of directors - Share capital: 39,668,399 euros - 857 802 508 RCS West Bend