

Ficha técnica :

MT-X 625 HA COMFORT



 **MANITOU**
HANDLING YOUR WORLD

| Capacities | | Métrico |
|---|-----------|---|
| Max. capacity | | 2500 kg |
| Max. lifting height | | 5.85 m |
| Max. outreach | | 3.40 m |
| Breakout force with bucket | | 3427 daN |
| Weight and dimensions | | |
| Overall length to carriage | l11 | 3.90 m |
| Length to face of forks | l2 | 3.90 m |
| Overall width | b1 | 1.81 m |
| Overall height | h17 | 1.92 m |
| Wheelbase | y | 2.30 m |
| Ground clearance | m4 | 0.33 m |
| Overall cab width | b4 | 0.79 m |
| Tilt-up angle | a4 | 12 ° |
| Tilt-down angle | a5 | 117 ° |
| External turning radius (over tyres) | Wa1 | 3.31 m |
| Unladen weight | | 5130 kg |
| Overall weight | | 4800 kg |
| Tires type | | Pneumatic |
| Standard tires | | Solideal 12-16,5 12PR SKS XT TL |
| Forks length / width / section | l / e / s | 1200 mm x 125 mm x 45 mm |
| Performances | | |
| Lifting | | 7.80 s |
| Lowering | | 5.50 s |
| Extension | | 5.40 s |
| Retraction | | 3.50 s |
| Crowd | | 3 s |
| Dump | | 3 s |
| Engine | | |
| Engine brand | | Kubota |
| Engine norm | | Stage IIIA |
| Number of cylinders / Capacity of cylinders | | 4 - 3331 cm³ |
| I.C. Engine power rating - Power | | 75 Hp / 55.40 kW |
| Max. torque / Engine rotation | | 265 Nm @ 1400 rpm |
| Drawbar pull (Laden) | | 3550 daN |
| Electric circuit | | |
| Battery voltage | | 12 V |
| 12V Battery capacity | | 110 Ah |
| Transmission | | |
| Transmission type | | Hydrostatic |
| Number of gears (forward / reverse) | | 2 / 2 |
| Max. travel speed | | 24.90 km/h |
| Parking brake | | Automatic negative parking brake |
| Service brake | | Oil-Immersed multi-discs braking on front axles |
| Axle Manufacturer | | Dana |
| Hydraulics | | |
| Hydraulic pump type | | Gear pump |
| Hydraulic flow / Pressure | | 90 l/min-235 bar |
| Tank capacities | | |
| Engine oil | | 11.20 l |
| Hydraulic oil | | 115 l |
| Hydraulic tank capacity | | 11.20 l |
| Fuel tank | | 63 l |
| Noise and vibration | | |
| Noise at driving position (LpA) | | 76 dB |
| Noise to environment (LwA) | | 104 dB |
| Vibration on hands/arms | | < 2.50 m/s² |
| Compatible platform | | |
| Platform capacity | Q | 365 kg |
| Number of people | | 3 |
| Platform dimensions (length x width) | lp / ep | 2000 m x 1200 m |
| Platform weight* | | 410 kg |
| Miscellaneous | | |
| Steering wheels (front / rear) | | 2 / 2 |
| Drive wheels (front / rear) | | 2 / 2 |
| Safety cab homologation | | ROPS - FOPS cab (level 1) |
| Controls | | JSM |
| Additional information | | Data indicated with basket basket, except max. capacity, lifting height and offset. |

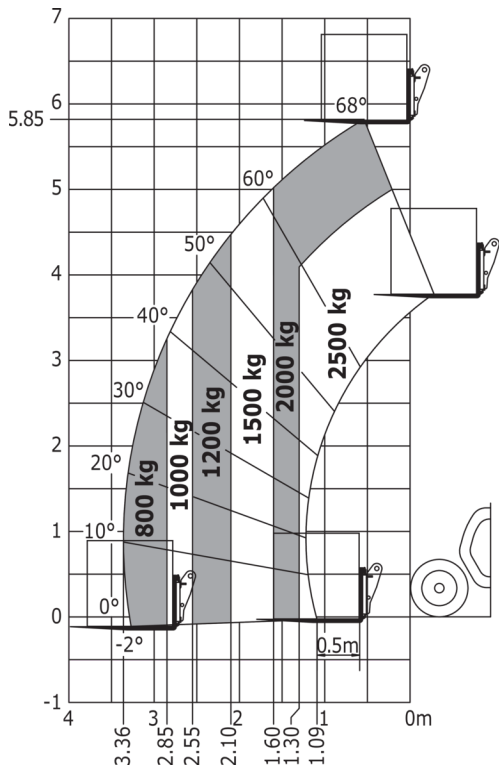
Data indicated with basket basket, except max. capacity, lifting height and offset.

MT-X 625 HA Comfort - Diagrama dimensional

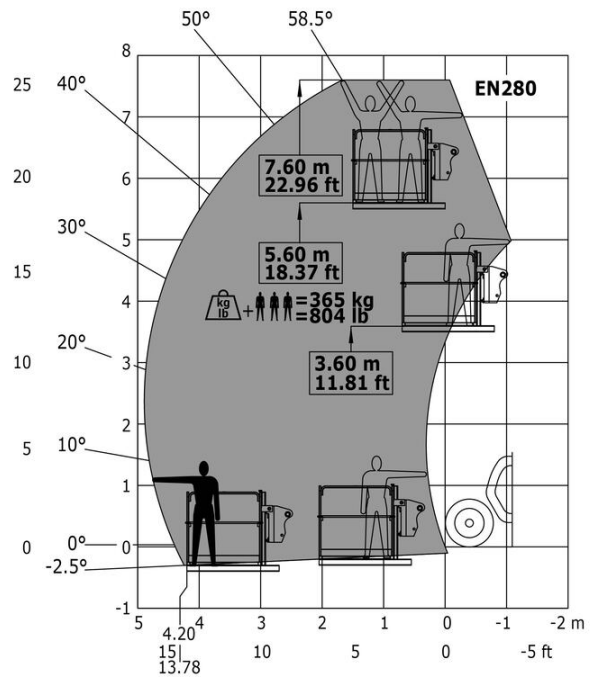


MT-X 625 HA Comfort - Diagramas de carga

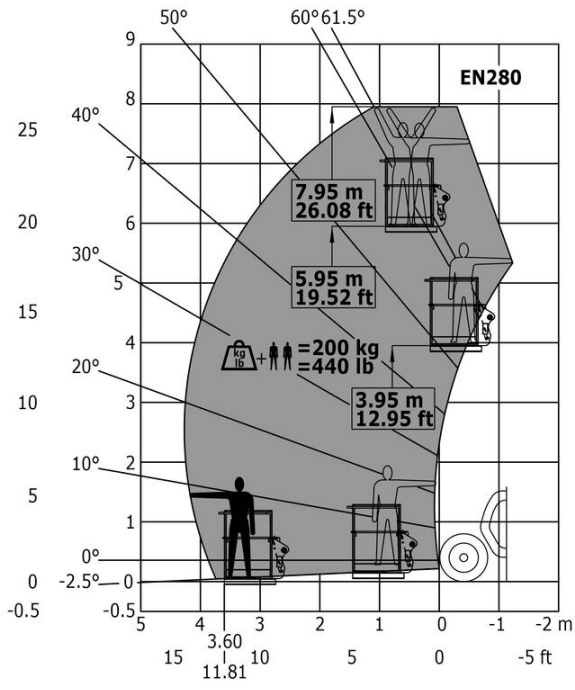
Machine on tires with forks Metric



Machine with Man basket - Metric



Load Chart metric





Oficina Central

B.P. 249 - 430 rue de l'Aubinière

44150 Ancenis Cedex - Francia

Tel.: 00 33 (0)2 40 09 10 11 - Fax: 00 33 (0)2 40 09 10 97

www.manitou.com



Esta publicación describe las versiones y posibilidades de configuración de los productos Manitou que puedan diferir en equipamiento. Los equipamientos presentados en este folleto pueden ser de serie, opcionales o no estar disponibles en algunas versiones. Manitou se reserva el derecho, en cualquier momento y sin previo aviso, de modificar las especificaciones descritas y representadas. Las especificaciones aportadas no comprometen al fabricante. Para más información, póngase en contacto con su concesionario Manitou. Documento no contractual. Presentación de los productos no contractual. Lista de especificaciones no exhaustiva. Los logos y la identidad visual de la empresa son propiedad de Manitou y no pueden ser utilizados sin autorización. Todos los derechos reservados. Las fotos y los esquemas contenidos en este folleto se ofrecen para consulta y a título indicativo solamente.

Manitou BF SA - Sociedad anónima con Consejo de Administración - Capital social: 39 668 399 euros - 857 802 508 RCS Nantes