

# GCT 3-14+

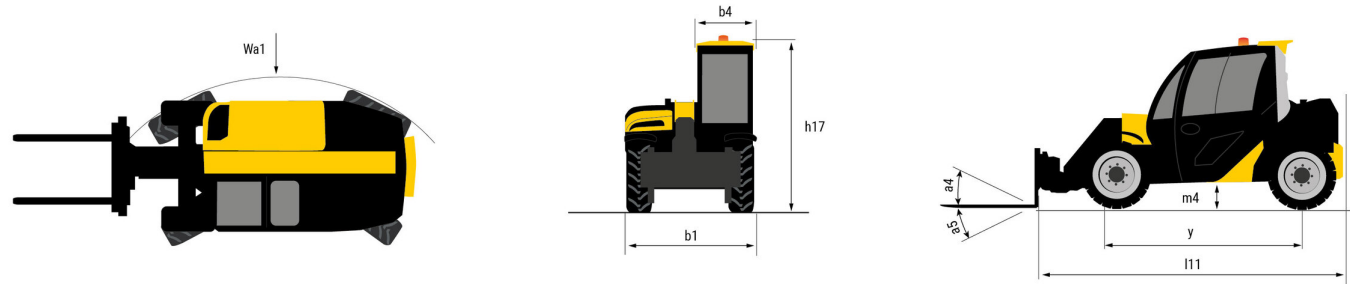
# GCT



# GEHL®

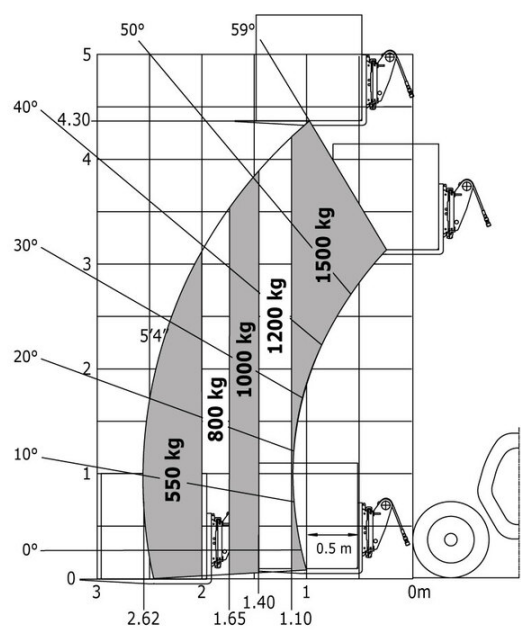
Capacities		Metric
Max. capacity		1500 kg
Max. lifting height		4.30 m
Max. outreach		2.62 m
Breakout force with bucket		1880 daN
Weight and dimensions		
Overall length to carriage	l11	3.47 m
Overall width	b1	1.49 m
Overall height	h17	1.92 m
Wheelbase	y	2.13 m
Ground clearance	m4	0.29 m
Overall cab width	b4	0.66 m
Tilt-up angle	a4	23 °
Tilt-down angle	a5	116 °
External turning radius (over tyres)	Wa1	2.62 m
Unladen weight		2700 kg
Performances		
Crowd		3.40 s
Dump		2.60 s
Engine		
Engine brand		Yanmar
Engine norm		Stage V / Tier 4 final
Engine model		3TNV88C-DMU
Number of cylinders / Capacity of cylinders		3 - 1642 cm³
I.C. Engine power rating - Power		35.10 Hp / 26.20 kW
Max. torque / Engine rotation		105 Nm @ 1950 rpm
Drawbar pull (Laden)		2000 daN
HVO validated (according to EN 15940 standard)		Yes
Transmission		
Transmission type		Hydrostatic
Number of gears (forward / reverse)		2 / 2
Travel speed (laden)		25 km/h
Max. travel speed		25 km/h
Parking brake		Automatic negative parking brake
Service brake		Hydraulic servo brake
Hydraulics		
Hydraulic pump type		Gear pump
Hydraulic Pressure		235 bar
Tank capacities		
Hydraulic oil		39 l
Fuel tank		35 l
Noise and vibration		
Vibration on hands/arms		< 2.50 m/s²
Miscellaneous		
Safety cab homologation		ROPS - FOPS level 1 cab
Controls		Joystick

GCT 3-14+ - Dimensional drawing



GCT 3-14+ - Load chart

Machine on tyres with forks Metric





Siège Social

P.O. Box 179 - One Gehl Way - West Bend, WI, USA 53095

Tel: (262) 334-9461 - Fax: (262) 338-7517

[www.gehl.com](http://www.gehl.com)



This brochure describes versions and configuration options for Gehl products which may be fitted with different equipment. The equipment described in this brochure may be standard, optional or not available depending on version. Gehl reserves the right to change the specifications shown and described at any time and without prior warning. The manufacturer is not liable for the specifications given. For more information, contact your Gehl dealer. Non-contractual document. Product descriptions may differ from actual products. List of specifications is not comprehensive. The logos and visual identity of the company are the property of Gehl and may not be used without authorization. All rights reserved. The photos and diagrams contained in this brochure are provided for information only.

MANITOU EQUIPMENT AMERICAS, LLC - Limited company with board of directors - Share capital: 39,668,399 euros - 857 802 508 RCS West Bend