

Technical sheet :

# ***TMT 55 HT***

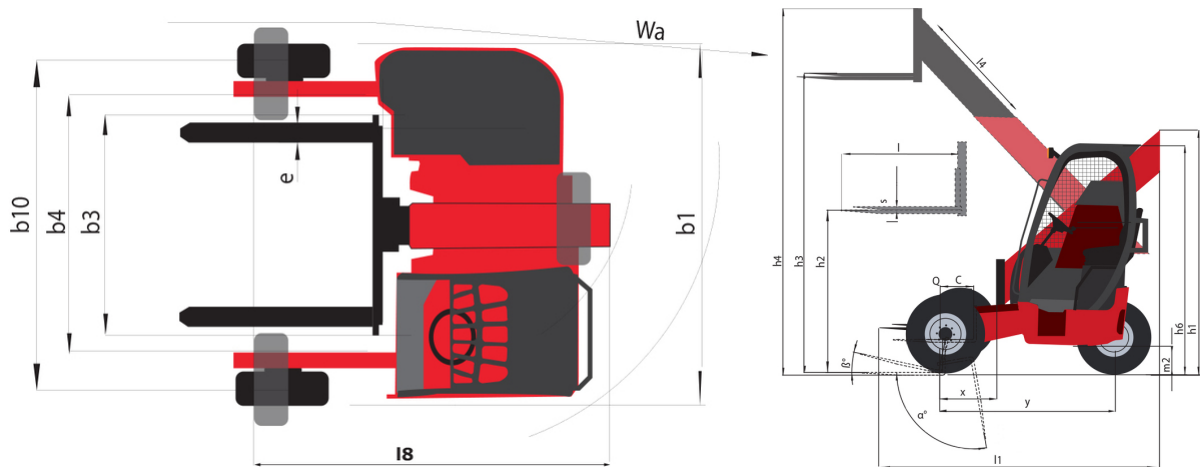
---



 **MANITOU**  
HANDLING YOUR WORLD

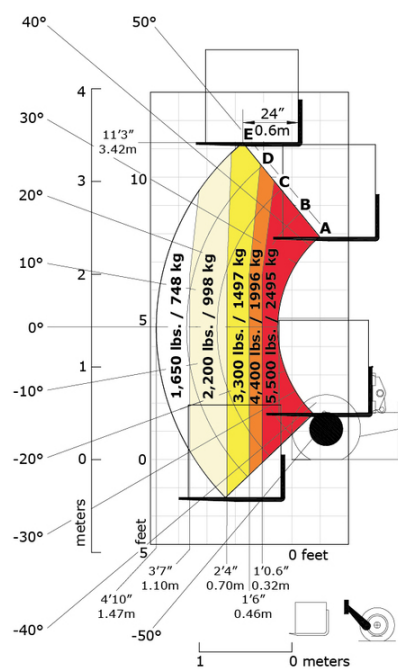
	Technical characteristics		Imperial
1.1	Manufacturer		Manitou
1.2.1	Reach out equipment		Telescopic boom
1.3	Power source		Diesel
1.4	Operator type		Seated
1.5	Max. capacity	Q	5512 lb
	<b>Weight</b>		
2.1	Service weight		5864 lb
	<b>Wheels</b>		
3.2	Dimensions of front wheels		31 x 15,5 - 15"
3.3	Dimensions of rear wheels		31 x 15,5 - 15"
3.5	Number of front wheels / rear wheels		3 / 1
3.5.2	Drive wheels (front / rear)		2 / 1
	<b>Dimensions</b>		
4.1.1	Mast/fork carriage tilt, backward		12 °
4.4	Max. lifting height	h3	135 in
4.5	Height telescopic boom extended	h4	154 in
4.21	Overall width	b1	8 ft 5 in
4.22	Forks section / width / length	s / e / l	2 in x 4 in x 48 in
4.28	Max. outreach		52 in
4.35	Turning radius	Wa	9 ft
	<b>Performances</b>		
5.1	Travel speed (laden)		7 mph
5.10	Service brake		Hydrostatic
5.11	Transmission type		Hydrostatic
	<b>Engine</b>		
7.1	Engine brand / norm		Kubota - Tier 4 final
7.2	Engine power according to ISO 1585		37 kW
7.3	Rated speed		2700 rpm
7.4	Capacity of cylinders		149 in³
	<b>Miscellaneous</b>		
8.2	Working hydraulic pressure for attachments		3553 PSI
8.3	Oil flow rate for attachments		12 US gpm

TMT 55 HT - Dimensional drawing

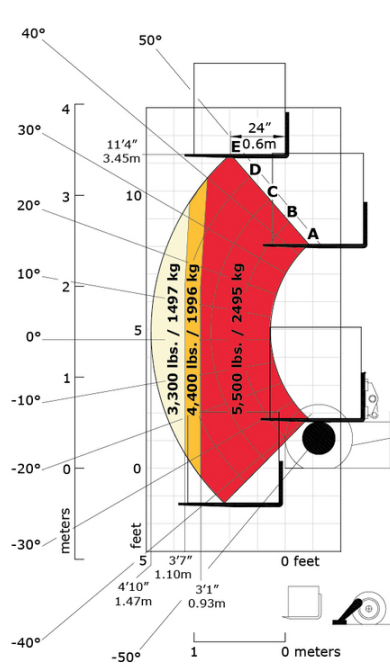


TMT 55 HT - Load chart

Machine on tyres with forks Imperial



Machine on stabilisers with forks Imperial





**Head Office**

B.P. 249 - 430 rue de l'Aubinière

44150 Ancenis Cedex - France

Tel: +33 (0)2 40 09 10 11 - Fax: +33 (0)2 40 09 10 97

[www.manitou.com](http://www.manitou.com)



This publication provides a description of the configuration versions and options for Manitou products, which may differ for equipment. The equipment presented in this brochure may be part of a series, as an option, or it may not be available, depending on the versions. Manitou reserves the right, at any time and without notice, to amend the specifications described and represented. The specifications provided do not bind the manufacturer. For more details, please contact your Manitou agent. This is not a contractually binding document. The presentation of the products is not contractually binding. List of specifications non-exhaustive. The logos as well as the visual identity of the company are owned by Manitou and cannot be used without authorisation. All rights reserved. The photos and diagrams contained in this brochure are only provided for consultation and information purposes.

MANITOU BF SA - Limited company with board of directors - Share capital: 39,668,399 euros - 857 802 508 RCS Nantes