

Technical sheet :

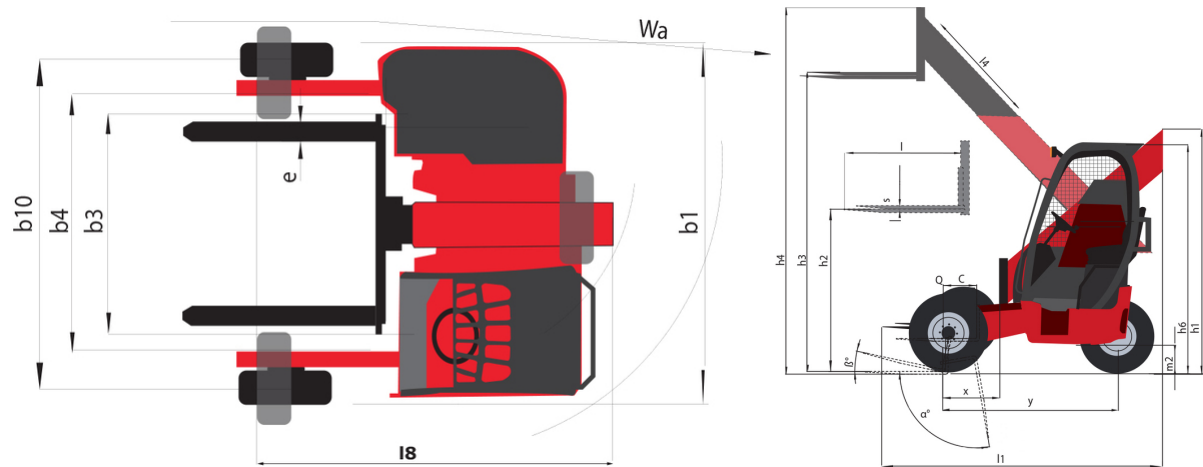
TMT 55 XT 4W



 **MANITOU**
HANDLING YOUR WORLD

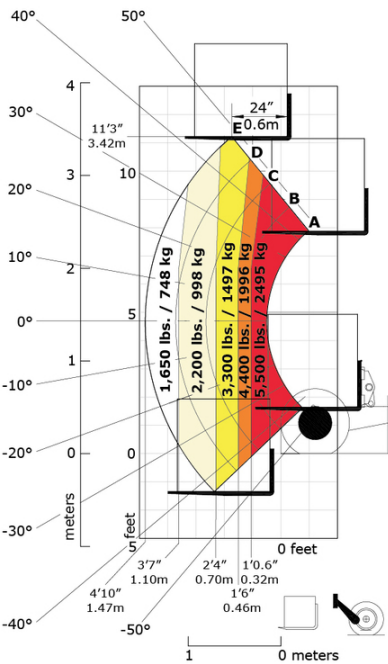
	Technical characteristics		Metric
1.1	Manufacturer		Manitou
1.2	Model Name		TMT 55 XT 4W
1.2.1	Reach out equipment		Telescopic boom
1.3	Power source		Diesel
1.4	Operator type		Seated
1.5	Max. capacity	Q	2500 kg
	Weight		
2.1	Service weight		2883 kg
	Wheels		
3.2	Dimensions of front wheels		31 x 15,5 - 15"
3.3	Dimensions of rear wheels		31x15,5-15
3.5	Number of front wheels / rear wheels		2 / 1
3.5.2	Drive wheels (front / rear)		2 / 1
	Dimensions		
4.1.1	Mast/fork carriage tilt, backward		12 °
4.4	Max. lifting height	h3	3430 mm
4.5	Height telescopic boom extended	h4	3915 mm
4.21	Overall width	b1	2.57 m
4.22	Forks section / width / length	s / e / l	44 mm x 102 mm x 1219 mm
4.28	Max. outreach		1310 mm
4.35	Turning radius	Wa	2610 mm
	Performances		
5.1	Travel speed (laden)		11 km/h
5.10	Service brake		Hydrostatic
5.11	Transmission type		Hydrostatic
	Engine		
7.1	Engine brand / norm		Kubota - Tier 4 final
7.2	Engine power according to ISO 1585		37 kW
7.3	Rated speed		2700 rpm
7.4	Capacity of cylinders		2434 cm³
	Miscellaneous		
8.2	Working hydraulic pressure for attachments		245 bar
8.3	Oil flow rate for attachments		46 l/min

TMT 55 XT 4W - Dimensional drawing

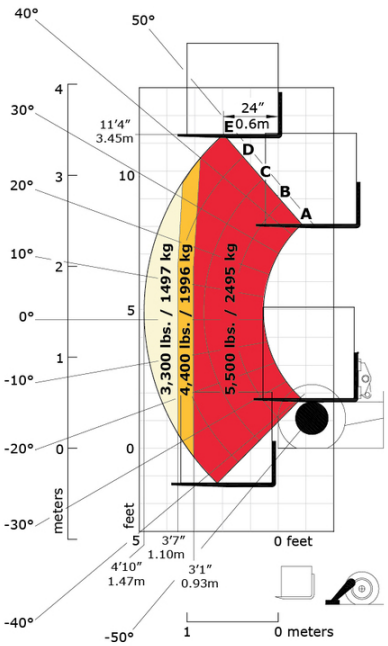


TMT 55 XT 4W - Load chart

Machine on tyres with forks Metric



Machine on stabilisers with forks Metric





Head Office

B.P. 249 - 430 rue de l'Aubinière

44150 Ancenis Cedex - France

Tel: +33 (0)2 40 09 10 11 - Fax: +33 (0)2 40 09 10 97

www.manitou.com



This publication provides a description of the configuration versions and options for Manitou products, which may differ for equipment. The equipment presented in this brochure may be part of a series, as an option, or it may not be available, depending on the versions. Manitou reserves the right, at any time and without notice, to amend the specifications described and represented. The specifications provided do not bind the manufacturer. For more details, please contact your Manitou agent. This is not a contractually binding document. The presentation of the products is not contractually binding. List of specifications non-exhaustive. The logos as well as the visual identity of the company are owned by Manitou and cannot be used without authorisation. All rights reserved. The photos and diagrams contained in this brochure are only provided for consultation and information purposes.

MANITOU BF SA - Limited company with board of directors - Share capital: 39,668,399 euros - 857 802 508 RCS Nantes