

Technical sheet :

MT 735 75D ST5



 **MANITOU**
HANDLING YOUR WORLD

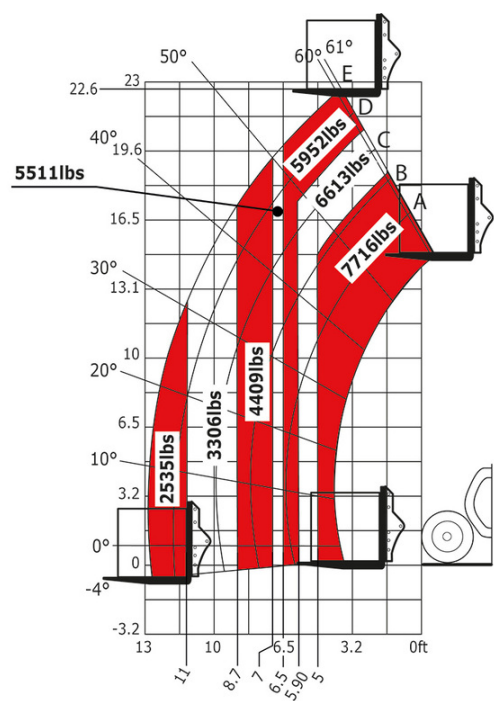
Capacities		Imperial
Max. capacity		7716 lb
Max. lifting height		22 ft 8 in
Maximum outreach		13 ft 1 in
Breakout force with bucket		6850 daN
Weight and dimensions		
Overall length to carriage	l11	15 ft 5 in
Length to face of forks	l2	15 ft 8 in
Overall length (with forks)	l1	19 ft 8 in
Overall width	b1	7 ft 6 in
Overall height	h17	8 ft 2 in
Wheelbase	y	9 ft 2 in
Ground clearance	m4	1 ft 5 in
Overall cab width	b4	3 ft 1 in
Tilt-up angle	a4	13 °
Tilt-down angle	a5	114 °
External turning radius	Wa3	12 ft 5 in
External turning radius (over tyres)	Wa1	12 ft 5 in
Unladen weight (with forks)		15278 lb
Unladen weight		14573 lb
Overall weight		15278 lb
Tires type		Inflatable
Standard tires		Alliance 400/80 - 24 -162A8
Forks length / width / section	l / e / s	47 in x 4 in x 2 in
Performances		
Lifting		5.90 s
Lowering		4.20 s
Extension		12.30 s
Retraction		4.70 s
Crowd		3.50 s
Dump		3.60 s
Engine		
Engine brand		Deutz
Engine norm		Stage V / Tier 4 Final
Engine model		TCD 3.6 L
Number of cylinders / Capacity of cylinders		4 - 178 in³
I.C. Engine power rating - Power		75 Hp / 55.40 kW
Max. torque / Engine rotation		277 ft/lbs @ 1400 rpm
Drawbar pull (Laden)		7220 daN
HVO validated (according to EN 15940 standard)		Yes
Electric circuit		
12V Battery capacity		110 Ah
Transmission		
Transmission type		Torque converter
Number of gears (forward / reverse)		4 / 4
Max. travel speed		15 mph
Max. travel speed (may vary according to applicable regulations)		15 mph
Parking brake		Automatic parking brake
Service brake		Hydraulic servo brake
Hydraulics		
Hydraulic pump type		Axial piston
Hydraulic flow / Pressure		29 US gpm-3771 PSI
Tank capacities		
Engine oil		2 US gal
Hydraulic oil		34 US gal
Fuel tank		27 US gal
Noise and vibration		
Noise at driving position (LpA)		77 dB
Noise to environment (LwA)		104 dB
Vibration on hands/arms		< 8 ft/s²
Miscellaneous		
Steering wheels (front / rear)		2 / 2
Drive wheels (front / rear)		2 / 2
Safety / Cab certification		Standard EN 15000 / Cabin ROPS - FOPS level 2
Controls		JSM

MT 735 75D ST5 - Dimensional drawing



MT 735 75D ST5 - Load chart

Machine on tires with forks Imperial





Head Office

B.P. 249 - 430 rue de l'Aubinière

44150 Ancenis Cedex - France

Tel: +33 (0)2 40 09 10 11 - Fax: +33 (0)2 40 09 10 97

www.manitou.com



This publication provides a description of the configuration versions and options for Manitou products, which may differ for equipment. The equipment presented in this brochure may be part of a series, as an option, or it may not be available, depending on the versions. Manitou reserves the right, at any time and without notice, to amend the specifications described and represented. The specifications provided do not bind the manufacturer. For more details, please contact your Manitou agent. This is not a contractually binding document. The presentation of the products is not contractually binding. List of specifications non-exhaustive. The logos as well as the visual identity of the company are owned by Manitou and cannot be used without authorisation. All rights reserved. The photos and diagrams contained in this brochure are only provided for consultation and information purposes.

MANITOU BF SA - Limited company with board of directors - Share capital: 39,668,399 euros - 857 802 508 RCS Nantes