

Technical sheet :

MT 1135 H 100D



 **MANITOU**
HANDLING YOUR WORLD

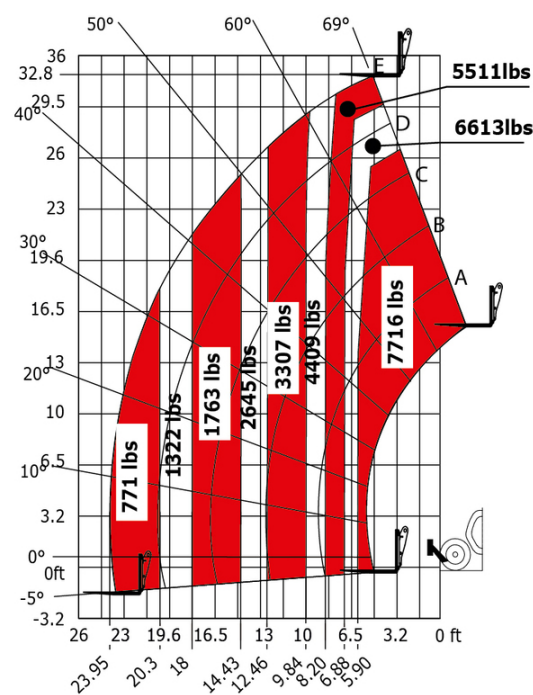
Capacities		Imperial
Max. capacity		7716 lb
Max. lifting height		35 ft 9 in
Maximum outreach		23 ft 7 in
Breakout force with bucket		6850 daN
Weight and dimensions		
Overall length to carriage	l11	17 ft 4 in
Length to face of forks	l2	16 ft 10 in
Overall length (with forks)	l1	20 ft 10 in
Overall width	b1	7 ft 5 in
Overall height	h17	8 ft 2 in
Wheelbase	y	110 in
Ground clearance	m4	1 ft 5 in
Overall cab width	b4	3 ft 1 in
Tilt-up angle	a4	13 °
Tilt-down angle	a5	114 °
External turning radius	Wa3	12 ft 4 in
External turning radius (over tyres)	Wa1	12 ft 4 in
Unladen weight (with forks)		19092 lb
Overall weight		19092 lb
Tires type		Inflatable
Standard tires		Alliance 400/80 - 24 - 162A8
Forks length / width / section	l / e / s	47 in x 4 in x 2 in
Performances		
Lifting		7.60 s
Lowering		5.40 s
Extension		12.30 s
Retraction		8.20 s
Crowd		3.10 s
Dump		3.60 s
Engine		
Engine brand		Deutz
Engine norm		Stage V
Engine model		TCD 3.6
Number of cylinders / Capacity of cylinders		4 - 221 in³
Engine power (Hp/kW)		100 Hp / 74.40 kW
Max. torque / Engine rotation		302 ft/lbs @ 1600 rpm
Drawbar pull (Laden)		6900 daN
Transmission		
Transmission type		Hydrostatic
Number of gears (forward / reverse)		2 / 2
Max. travel speed		15 mph
Parking brake		Automatic parking brake
Service brake		Hydraulic servo brake
Hydraulics		
Hydraulic pump type		Axial piston
Hydraulic Pressure		3916 PSI
Tank capacities		
Engine oil		3 US gal
Hydraulic oil		39 US gal
Diesel Exhaust fluid (AdBlue® type)		3 US gal
Fuel		36 US gal
Noise and vibration		
Noise at driving position (LpA)		77 dB
Noise to environment (LwA)		104 dB
Vibration on hands/arms		8 ft/s²
Miscellaneous		
Steering wheels (front / rear)		2 / 2
Drive wheels (front / rear)		2 / 2
Safety / Cab certification		Standard EN 15000 / Cabin ROPS - FOPS level 2
Controls		JSM

MT 1135 H 100D - Dimensional drawing



MT 1135 H 100D - Load chart

Machine on tires with forks Imperial





Head Office

B.P. 249 - 430 rue de l'Aubinière

44150 Ancenis Cedex - France

Tel: +33 (0)2 40 09 10 11 - Fax: +33 (0)2 40 09 10 97

www.manitou.com



This publication provides a description of the configuration versions and options for Manitou products, which may differ for equipment. The equipment presented in this brochure may be part of a series, as an option, or it may not be available, depending on the versions. Manitou reserves the right, at any time and without notice, to amend the specifications described and represented. The specifications provided do not bind the manufacturer. For more details, please contact your Manitou agent. This is not a contractually binding document. The presentation of the products is not contractually binding. List of specifications non-exhaustive. The logos as well as the visual identity of the company are owned by Manitou and cannot be used without authorisation. All rights reserved. The photos and diagrams contained in this brochure are only provided for consultation and information purposes.

MANITOU BF SA - Limited company with board of directors - Share capital: 39,668,399 euros - 857 802 508 RCS Nantes