

Technical sheet :

# MTA 519 H

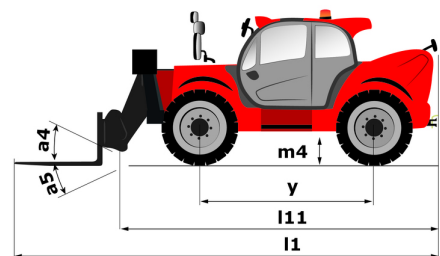
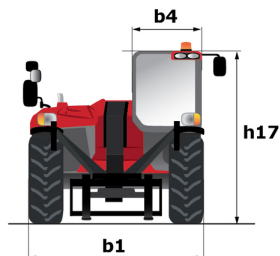
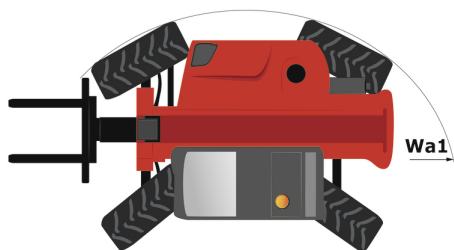
---



 **MANITOU**  
HANDLING YOUR WORLD

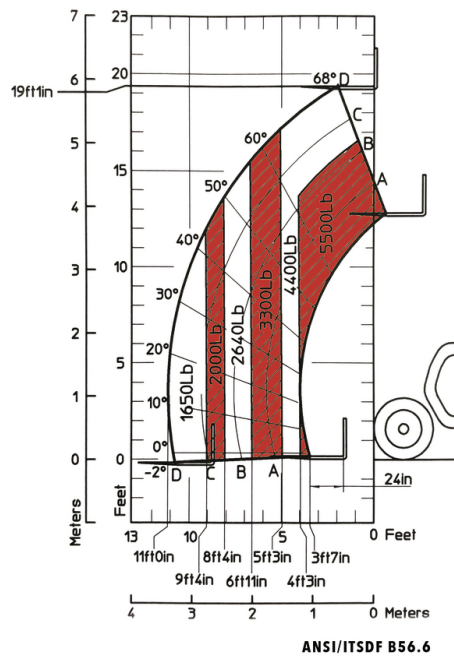
Capacities		Imperial
Max. capacity		5500 lb
Max. lifting height		19 ft 1 in
Maximum outreach		11 ft 2 in
Breakout force with bucket		3425.13 daN
Weight and dimensions		
Length to face of forks	l2	12 ft 9 in
Overall width	b1	5 ft 11 in
Overall height	h17	6 ft 4 in
Wheelbase	y	91 in
Ground clearance	m4	13 in
Overall cab width	b4	31 in
Tilt-up angle	a4	12 °
Tilt-down angle	a5	117 °
External turning radius (over tyres)	Wa1	10 ft 10 in
Unladen weight (with forks)		10406 lb
Tires type		Pneumatic
Forks length / width / section	l / e / s	47 in x 5 in x 2 in
Performances		
Lifting		8 s
Lowering		5.40 s
Extension		5.60 s
Retraction		4.30 s
Crowd		3.50 s
Dump		3.60 s
Engine		
Engine brand		Kubota
Engine norm		Tier 4 final
Engine model		V3307-CR-TE5B
Number of cylinders / Capacity of cylinders		4 - 203 in³
I.C. Engine power rating - Power		74 Hp / 55.40 kW
Max. torque / Engine rotation		1033 ft/lbs @ 2600 rpm
Drawbar pull		3229.40 daN
Transmission		
Transmission type		Hydrostatic
Number of gears (forward / reverse)		2 / 2
Max. travel speed		16 mph
Max. travel speed (may vary according to applicable regulations)		16 mph
Parking brake		Hydraulic spring release SAHR
Service brake		Wet disc brakes
Hydraulics		
Hydraulic pump type		Gear pump
Hydraulic flow / Pressure		23 US gpm-3408 PSI
Tank capacities		
Engine oil		3 US gal
Hydraulic oil		30 US gal
Fuel tank		17 US gal
Miscellaneous		
Steering wheels (front / rear)		2 / 2
Drive wheels (front / rear)		2 / 2
Controls		Joystick

## MTA 519 H - Dimensional drawing



## MTA 519 H - Load chart

Machine on tires with forks Imperial





**Head Office**

B.P. 249 - 430 rue de l'Aubinière

44150 Ancenis Cedex - France

Tel: +33 (0)2 40 09 10 11 - Fax: +33 (0)2 40 09 10 97

[www.manitou.com](http://www.manitou.com)



This publication provides a description of the configuration versions and options for Manitou products, which may differ for equipment. The equipment presented in this brochure may be part of a series, as an option, or it may not be available, depending on the versions. Manitou reserves the right, at any time and without notice, to amend the specifications described and represented. The specifications provided do not bind the manufacturer. For more details, please contact your Manitou agent. This is not a contractually binding document. The presentation of the products is not contractually binding. List of specifications non-exhaustive. The logos as well as the visual identity of the company are owned by Manitou and cannot be used without authorisation. All rights reserved. The photos and diagrams contained in this brochure are only provided for consultation and information purposes.

MANITOU BF SA - Limited company with board of directors - Share capital: 39,668,399 euros - 857 802 508 RCS Nantes