

Technical sheet :

MT 1440 E

OXYGEN



 **MANITOU**
HANDLING YOUR WORLD

| Capacities | | Metric |
|--------------------------------------|-----------|---|
| Max. capacity | Q | 4000 kg |
| Max. lifting height | | 13.55 m |
| Maximum outreach | | 9.45 m |
| Weight and dimensions | | |
| Overall length to carriage | l11 | 6.07 m |
| Overall width | b1 | 2.36 m |
| Overall height | h17 | 2.49 m |
| Wheelbase | y | 3.07 m |
| Ground clearance | m4 | 0.37 m |
| Overall cab width | b4 | 0.95 m |
| Tilt-up angle | a4 | 16 ° |
| Tilt-down angle | a5 | 110 ° |
| External turning radius (over tyres) | Wa1 | 4.01 m |
| Overall weight | | 11000 kg |
| Tires type | | Inflatable |
| Standard tires | | ALLIANCE - A325 - 400 / 80-24 162A8 |
| Forks length / width / section | l / e / s | 1200 mm x 125 mm x 50 mm |
| Performances | | |
| Lifting | | 16 s |
| Lowering | | 12.40 s |
| Extension | | 17.30 s |
| Retraction | | 13 s |
| Crowd | | 4 s |
| Dump | | 4 s |
| Engine/Battery | | |
| Drive motor power rating | | 56 kW |
| Hydraulic motor power | | 28 kW |
| Battery technology | | Lithium-ion |
| Battery capacity | | 683 Ah |
| Battery nominal voltage | | 90 V |
| Battery energy | | 63 kWh |
| Charger Power / Phase / Current type | | 9 kW / Single-phase or three-phase / AC |
| Electric circuit | | |
| Battery voltage / capacity | | 100 V / 683 Ah |
| 12V Battery capacity | | 110 Ah |
| Transmission | | |
| Transmission type | | Electrical |
| Number of gears (forward / reverse) | | 2 / 2 |
| Max. travel speed | | 24.90 km/h |
| Parking brake | | Automatic parking brake |
| Service brake | | Hydraulic |
| Hydraulics | | |
| Hydraulic pump type | | Variable displacement pump |
| Capacity of hydraulic pump | | 63 cm³ |
| Hydraulic flow / Pressure | | 160 l/min-240 bar |
| Tank capacities | | |
| Hydraulic tank capacity | | 135 l |
| Noise and vibration | | |
| Noise at driving position (LpA) | | 60 dB |
| Noise to environment (LwA) | | 98 dB |
| Vibration on hands/arms | | < 2.50 m/s² |
| Miscellaneous | | |
| Steering wheels (front / rear) | | 2 / 2 |
| Drive wheels (front / rear) | | 2 / 2 |
| Cab certification | | Cabin ROPS - FOPS level 2 |
| Controls | | JSM |

Options / Finishing

S : Standard / O : Optional / - : Not available

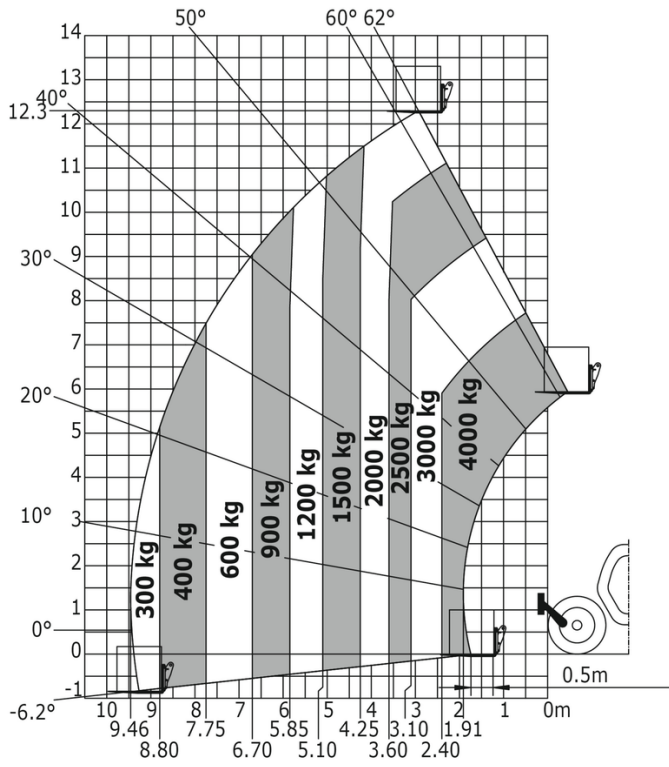
| | Standard | Comfort |
|---|----------|---------|
| Lifting function | | |
| Attachment hydraulic line | 0 | S |
| Easy Connect System (ECS) | 0 | 0 |
| Operator station | | |
| Additional handle in the cab right hand side | 0 | 0 |
| Adjustable and telescopic steering column | 0 | S |
| Air suspension cloth-covered seat | 0 | 0 |
| Bluetooth USB radio - With extra microphone - 100W | 0 | 0 |
| Bluetooth USB radio - With integrated microphone - 100W | 0 | 0 |
| Boom suspension "Active CRC" | 0 | 0 |
| Electric windows | 0 | 0 |
| Fixed armrest | 0 | 0 |
| Floor mat | 0 | S |
| Inner rear view mirror | 0 | 0 |
| Lateral wiper | 0 | S |
| Manual air conditioning | 0 | 0 |
| Mechanical cloth seat | 0 | 0 |
| Mechanical suspension PVC seat - Grammer MSG65 | S | S |
| Radio pre-fitting | 0 | S |
| Rear camera with cab display screen | 0 | 0 |
| Tuner car radio - 50W | 0 | 0 |
| Motorization/Power | | |
| Centralized greasing points | 0 | 0 |
| Continuous flow hydraulics | 0 | 0 |
| Europe plug adapter - Three-phase cable | S | S |
| On-board charger 9kW | S | S |
| Plug for MANITOU external charger - 30kW DC - Lithium-ion | S | - |
| Three-phase charging cable kit + adapters | S | S |
| Lighting | | |
| LED front road lights | - | S |
| LED front work lights | 0 | 0 |
| LED rear work lights | 0 | 0 |
| LED work lights - On boom head (Telescopic part) | 0 | 0 |
| Security | | |
| Battery cut-off | S | S |
| Emergency stop button outside the cab | 0 | 0 |
| OSS - Operation Safety System | 0 | 0 |
| Pedestrian detection camera (rear) | 0 | 0 |
| Pneumatics | | |
| Tires - ALLIANCE - A325 - 400/80-24 162A8 | S | S |
| Tires - ALLIANCE - A325 - 440/80 R24 162A8 | 0 | 0 |
| Tires - MICHELIN - BIBLOAD - 440/80 R24 161A8 | 0 | 0 |

MT 1440 e - Dimensional drawing

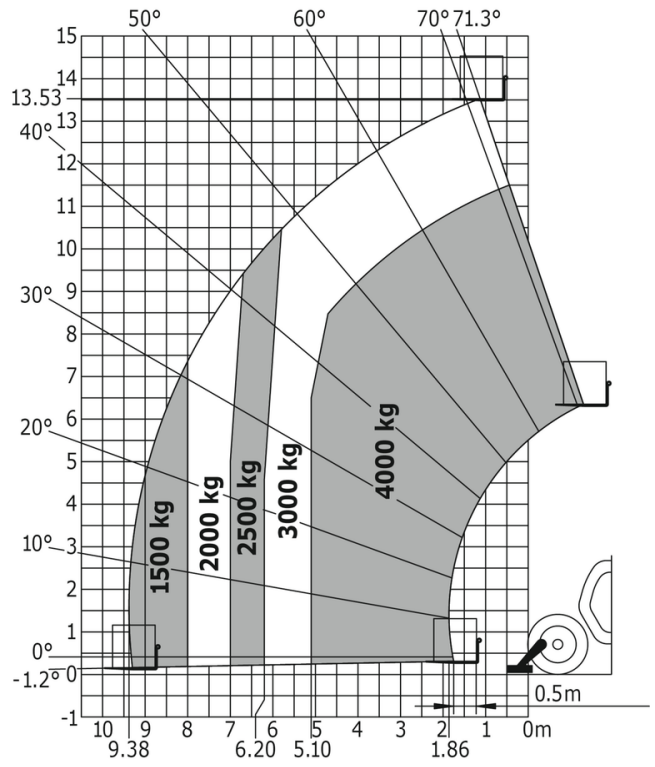


MT 1440 e - Load chart

Machine on tires with forks Metric



Machine on lowered stabilisers with forks Metric





Head Office

B.P. 249 - 430 rue de l'Aubinière
44150 Ancenis Cedex - France

Tel: +33 (0)2 40 09 10 11 - Fax: +33 (0)2 40 09 10 97

www.manitou.com



This publication provides a description of the configuration versions and options for Manitou products, which may differ for equipment. The equipment presented in this brochure may be part of a series, as an option, or it may not be available, depending on the versions. Manitou reserves the right, at any time and without notice, to amend the specifications described and represented. The specifications provided do not bind the manufacturer. For more details, please contact your Manitou agent. This is not a contractually binding document. The presentation of the products is not contractually binding. List of specifications non-exhaustive. The logos as well as the visual identity of the company are owned by Manitou and cannot be used without authorisation. All rights reserved. The photos and diagrams contained in this brochure are only provided for consultation and information purposes.

MANITOU BF SA - Limited company with board of directors - Share capital: 39,668,399 euros - 857 802 508 RCS Nantes