

Technical sheet :

MT 625 E

OXYGEN



 **MANITOU**
HANDLING YOUR WORLD

| Capacities | | Metric |
|--------------------------------------|-----------|-------------------------------|
| Max. capacity | Q | 2500 kg |
| Max. lifting height | | 5.85 m |
| Max. outreach | | 3.36 m |
| Breakout force with bucket | | 3770 daN |
| Weight and dimensions | | |
| Overall length to carriage | l11 | 3.83 m |
| Overall length (with forks) | l1 | 5.09 m |
| Overall width | b1 | 1.81 m |
| Overall height | h17 | 1.92 m |
| Wheelbase | y | 2.30 m |
| Ground clearance | m4 | 0.33 m |
| Overall cab width | b4 | 0.80 m |
| Tilt-up angle | a4 | 12 ° |
| Tilt-down angle | a5 | 117 ° |
| External turning radius (over tyres) | Wa1 | 3.31 m |
| Overall weight | | 4755 kg |
| Tires type | | Inflatable |
| Standard tires | | CAMSO SKS532 12-16.5 |
| Forks length / width / section | l / e / s | 1200 mm x 125 mm x 45 mm |
| Performances | | |
| Lifting | | 11.10 s |
| Lowering | | 8 s |
| Extension | | 7.70 s |
| Retraction | | 7.40 s |
| Crowd | | 4.45 s |
| Dump | | 4.30 s |
| Engine | | |
| Max. torque | | 200 Nm |
| Drawbar pull (Laden) | | 2090 daN |
| Engine/Battery | | |
| Drive motor power rating | | 40 kW |
| Hydraulic motor power | | 30 kW |
| Battery technology | | Lithium-ion |
| Battery capacity | | 348 Ah |
| Battery energy | | 35 kWh |
| Charger Power / Phase / Current type | | 3 kW / Single-phase / AC |
| Electric circuit | | |
| Battery voltage / capacity | | 100 V / 348 Ah |
| 12V Battery capacity | | 74 Ah |
| Transmission | | |
| Transmission type | | Electrical |
| Number of gears (forward / reverse) | | 1 / 1 |
| Max. travel speed | | 20 km/h |
| Parking brake | | Hydraulic spring release SAHR |
| Service brake | | Hydraulic |
| Hydraulics | | |
| Hydraulic pump type | | Gear pump |
| Hydraulic flow / Pressure | | 84 l/min-235 bar |
| Tank capacities | | |
| Hydraulic oil | | 80 l |
| Noise and vibration | | |
| Noise at driving position (LpA) | | 72 dB |
| Noise to environment (LWA) | | 92 dB |
| Vibration on hands/arms | | < 2.50 m/s ² |
| Miscellaneous | | |
| Steering wheels (front / rear) | | 2 / 2 |
| Drive wheels (front / rear) | | 2 / 2 |

Options / Finishing

S : Standard / O : Optional / - : Not available

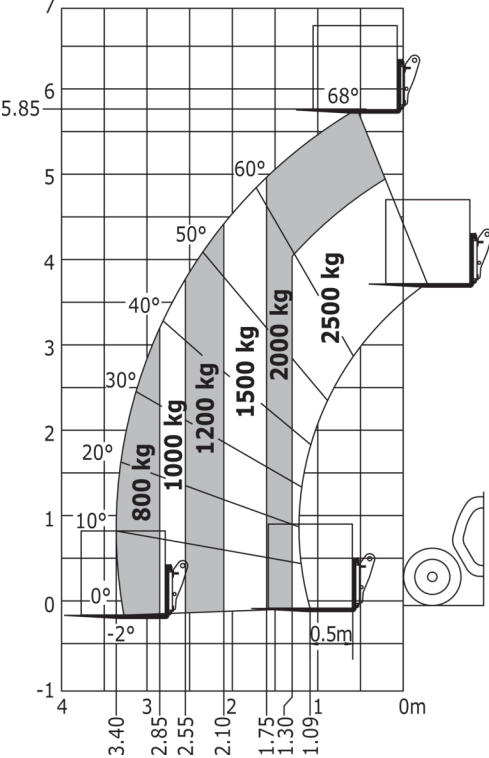
| | Standard |
|---|----------|
| External charger - 30kW DC - Lithium-ion | 0 |
| Operator station | |
| 12Volt Power Port | S |
| Adjustable and telescopic steering column | S |
| Air suspension fabric seat - GRAMMER | 0 |
| Document holder | 0 |
| Heating | S |
| Manual air conditioning | 0 |
| Phone support | 0 |
| Rear window with de-icing | 0 |
| Rear wiper | S |
| Roof wiper | S |
| Tuner car radio - 50W | 0 |
| Motorization/Power | |
| Onboard charger - 3kW AC_MT | S |
| On-board charger 9kW | 0 |
| Lighting | |
| Flat Led Rotating Beacon | 0 |
| LED front road lights | S |
| LED front work lights | S |
| LED rear work lights | S |
| Security | |
| Audio warning on reverse | S |
| Battery cut-off | S |
| Speed limiter | 0 |
| Windscreen sun visor | S |

MT 625 e - Dimensional drawing



MT 625 e - Load chart

Machine on tires with forks Metric





Head Office

B.P. 249 - 430 rue de l'Aubinière
44150 Ancenis Cedex - France

Tel: +33 (0)2 40 09 10 11 - Fax: +33 (0)2 40 09 10 97

www.manitou.com



This publication provides a description of the configuration versions and options for Manitou products, which may differ for equipment. The equipment presented in this brochure may be part of a series, as an option, or it may not be available, depending on the versions. Manitou reserves the right, at any time and without notice, to amend the specifications described and represented. The specifications provided do not bind the manufacturer. For more details, please contact your Manitou agent. This is not a contractually binding document. The presentation of the products is not contractually binding. List of specifications non-exhaustive. The logos as well as the visual identity of the company are owned by Manitou and cannot be used without authorisation. All rights reserved. The photos and diagrams contained in this brochure are only provided for consultation and information purposes.

MANITOU BF SA - Limited company with board of directors - Share capital: 39,668,399 euros - 857 802 508 RCS Nantes