

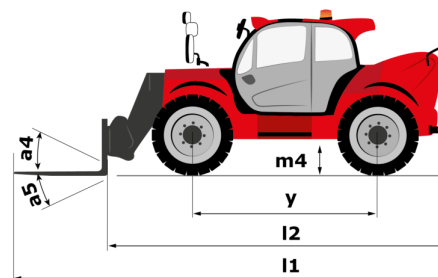
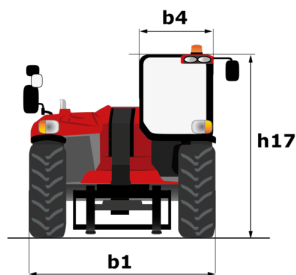
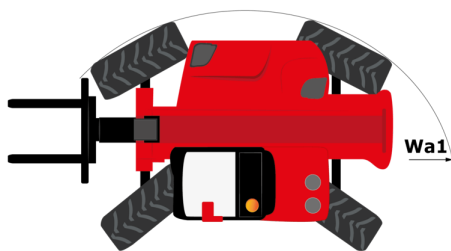
Technisches Datenblatt :

# MHT 790 MINING ST5



| Capacities                                  |           | Metrisch   |
|---|-----------|--|
| Max. capacity                               |           | 9000 kg  |
| Load center of gravity                      | c         | 600 mm   |
| Max. lifting height                         |           | 6.80 m   |
| Max. outreach                               |           | 3.70 m   |
| Weight and dimensions                       |           |  |
| Overall length                              | l1        | 6.41 m   |
| Unladen weight (with forks)                 |           | 13160 kg   |
| Ground clearance                            | m4        | 0.44 m   |
| Wheelbase                                   | y         | 2.87 m   |
| Length to face of forks                     | l2        | 5.21 m   |
| Overall width                               | b1        | 2.47 m   |
| Overall height                              | h17       | 2.50 m   |
| Overall cab width                           | b4        | 0.93 m   |
| Tilt-up angle                               | a4        | 12 °   |
| Tilt-down angle                             | a5        | 125 °  |
| External turning radius (over tyres)        | Wa1       | 4.89 m   |
| Forks length / width / section              | l / e / s | 1200 mm x 200 mm / 60 mm                               |
| Wheels                                      |           |  |
| Standard tires                              |           | 445/65 R22,5   |
| Number of front wheels / rear wheels        |           | 2 / 2  |
| Steering wheels (front / rear)              |           | 2 / 2  |
| Drive wheels (front / rear)                 |           | 2 / 2  |
| Steering mode                               |           | 2 wheel steer, 4 wheel steer, Crab mode                |
| Engine                                      |           |  |
| Engine brand                                |           | Yanmar   |
| Engine nom                                  |           | Stage V / Tier 4                                       |
| Engine model                                |           | 4TN107HT-5SMUF   |
| Number of cylinders / Capacity of cylinders |           | 4 - 4567 cm³   |
| I.C. Engine power rating / Power            |           | 143 Hp / 105 kW  |
| Max. torque / Engine rotation               |           | 602 Nm@1500 rpm  |
| Engine cooling system                       |           | Water  |
| Battery voltage                             |           | 12 V   |
| Drawbar pull                                |           | 10905 daN  |
| Transmission                                |           |  |
| Transmission type                           |           | Hydrostatic  |
| Number of gears (forward / reverse)         |           | 2 / 2  |
| Max. travel speed                           |           | 35 km/h  |
| Parking brake                               |           | Automatic negative parking brake                       |
| Service brake                               |           | Oil-immersed multi-discs braking on front & rear axles |
| Hydraulics                                  |           |  |
| Hydraulic pump type                         |           | Variable displacement pump                             |
| Hydraulic flow - Pressure                   |           | 185 l/min - 270 bar                                    |
| Tank capacities                             |           |  |
| Engine oil                                  |           | 13 l   |
| Fuel tank                                   |           | 165 l  |
| Noise and vibration                         |           |  |
| Noise to environment (LwA)                  |           | 103 dB   |
| Vibration on hands/arms                     |           | < 2.50 m/s²  |
| Miscellaneous                               |           |  |
| Safety / Safety cab homologation            |           | Standard EN 15000 - Cabin ROPS - FOPS level 2          |
| Controls                                    |           | JSM  |

## MHT 790 Mining ST5 - Maßzeichnung

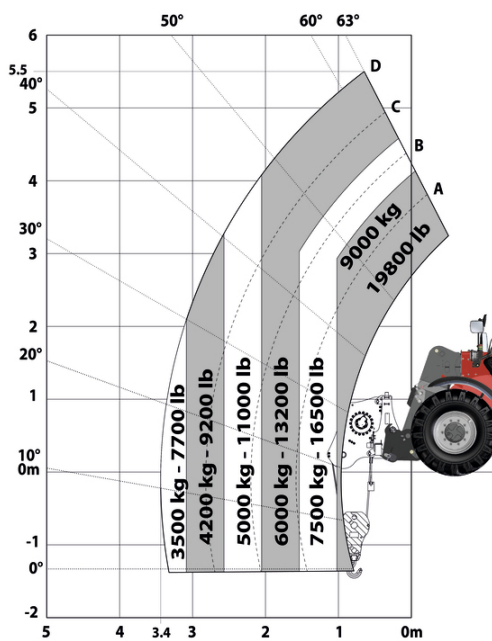


# MHT 790 Mining ST5 - Traglasttabellen

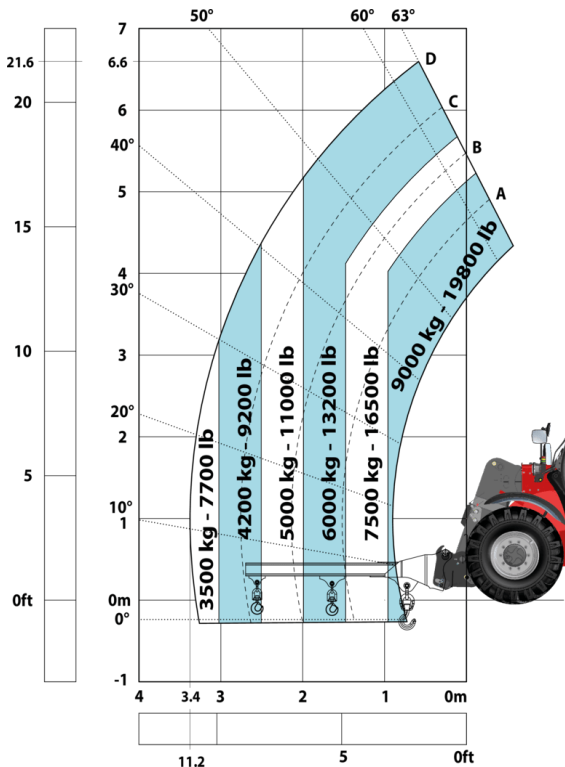
Machine on tires with forks LC 600 mm Metric



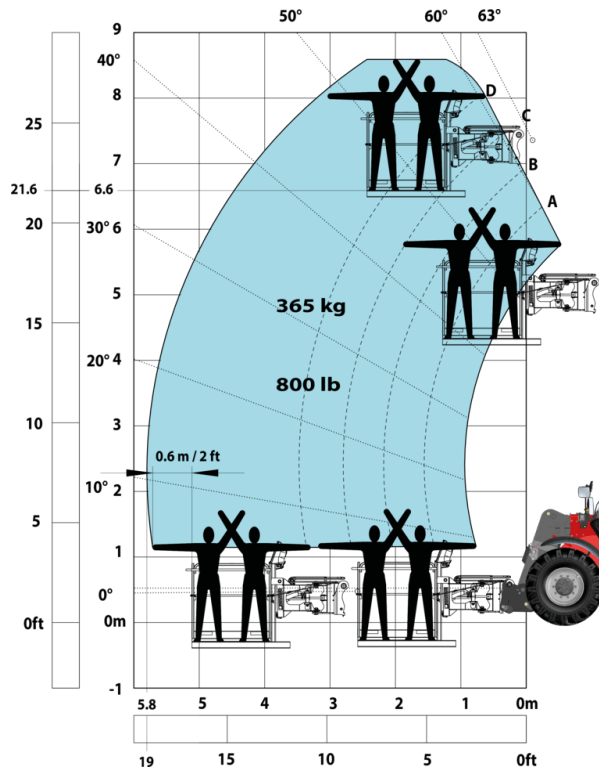
Machine on tires with winch 9000 kg (Metric)



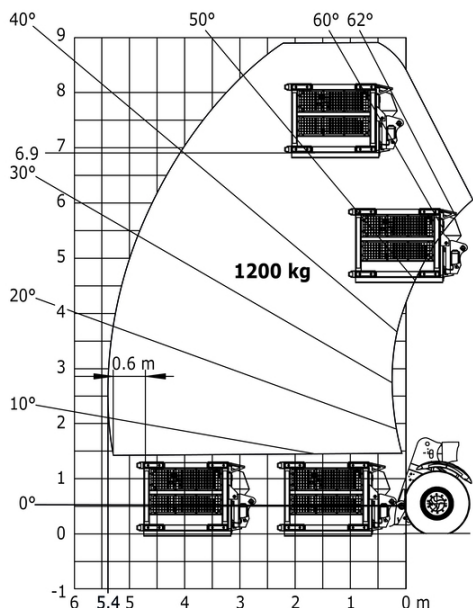
Machine on tires with 3-hook jib 9000 kg (Metric)



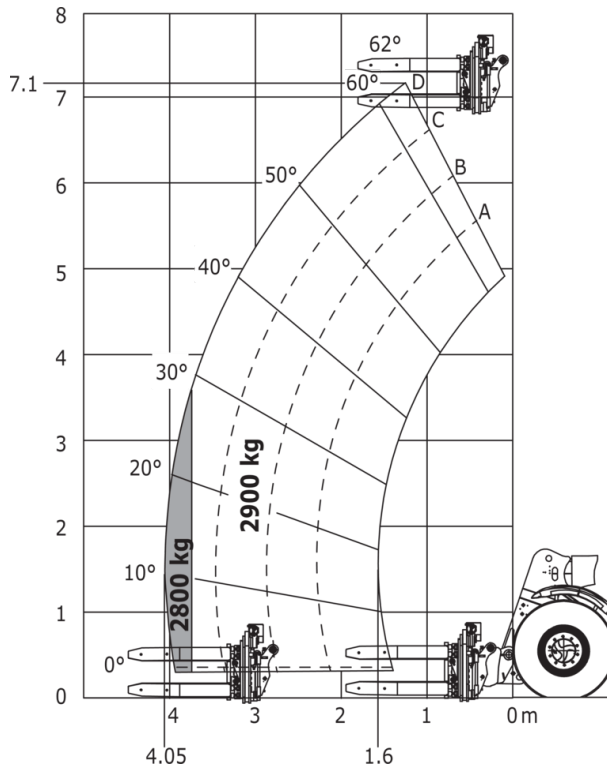
Machine on tires with platform Metric



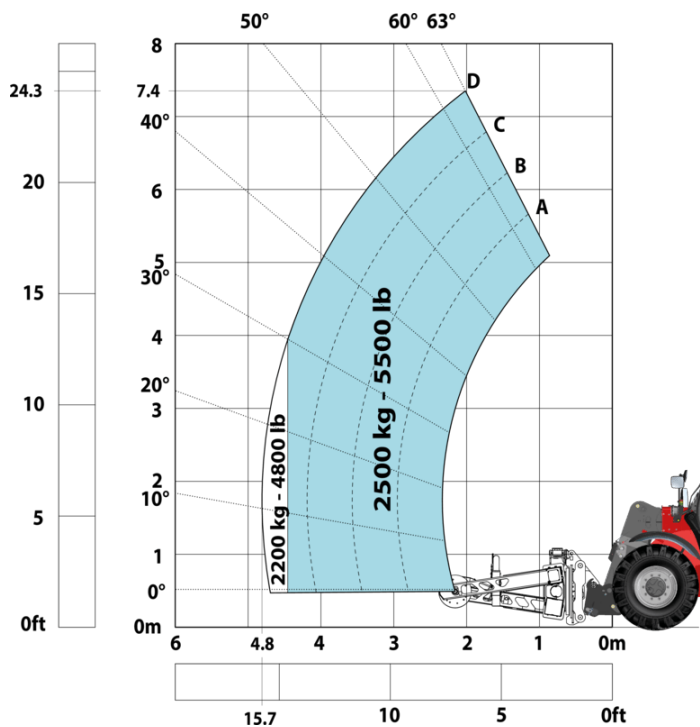
Machine on tires with underground mining platform (Metric)



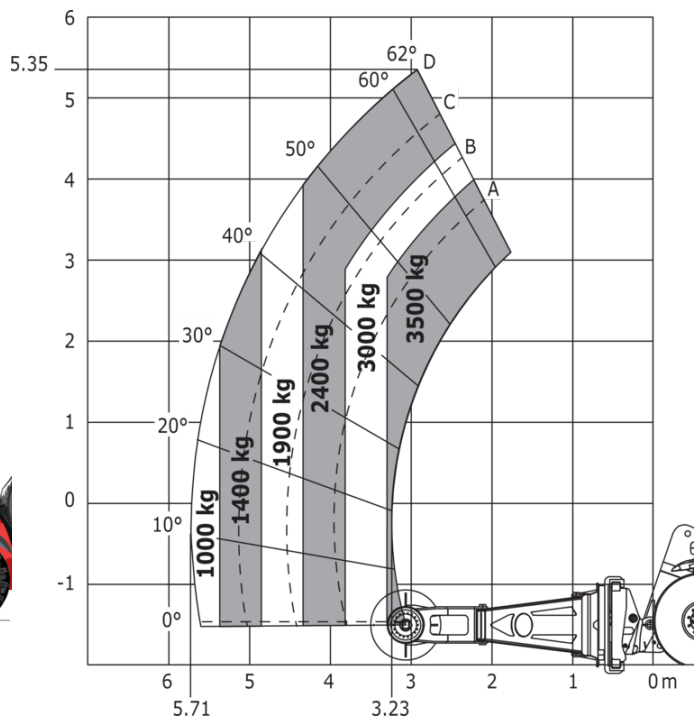
Machine on tires with tire handler TH 35 (Metric)



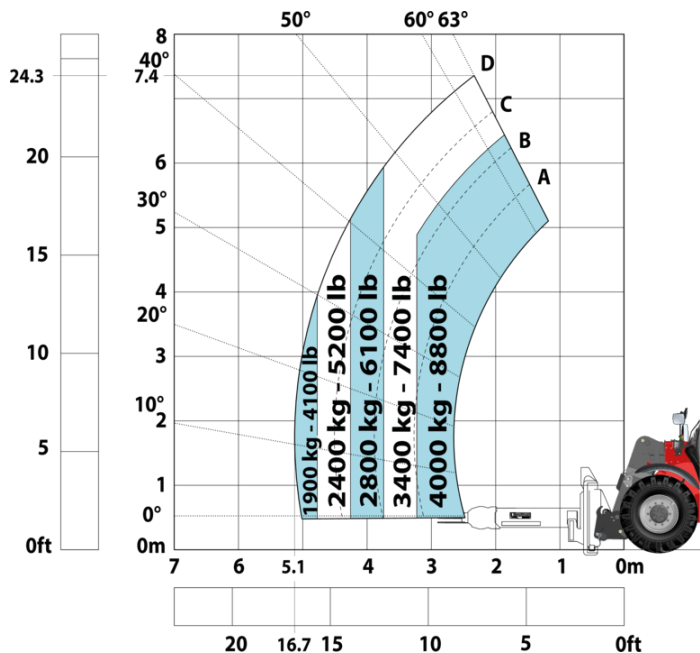
Machine on tires with tire handler TH 49 (Metric)



Machine on tires with tire handler TH 51 (Metric)



## Machine on tires with cylinder handler CH 4 (Metric)



## Mining Specifications

|  | MHT 790 Mining ST5 |
|--|--------------------|
| <b>Lifting function</b>                                |                    |
| Camera in boom head with screen in cab                 | 0                  |
| Clamp predisposition (controls from cabin)             | S                  |
| Comfort Ride Control (CRC) boom suspension             | 0                  |
| Working platform predisposition with remote control    | S                  |
| <b>Lighting</b>  |                    |
| Brake Lights ON When Park Brake ON                     | S                  |
| Flat Led Rotating Beacon                               | S                  |
| LED Flashing Lights On Cabin (Marker Lights)           | S                  |
| LED traming lights                                     | S                  |
| LED work lights on the boom (x2)                       | S                  |
| LED working lights on cab (x4 : 2 front + 2 rear)      | S                  |
| <b>Motorization/Power</b>                              |                    |
| Hydraulic hose sleeve burst protection                 | 0                  |
| Radiator safety cap                                    | S                  |
| <b>Operator station</b>                                |                    |
| Roof and Windshield Guard                              | S                  |
| <b>Other options</b>                                   |                    |
| Battery + Starter Isolators + Jump Start Receptacle    | S                  |
| Stainless steel tool box                               | S                  |
| <b>Secondary functions</b>                             |                    |
| Automatic Greasing System (AGS) - chassis + boom       | 0                  |
| <b>Security</b>  |                    |
| "Guardian Angel" System Level 1                        | S                  |
| 360° visibility safety system                          | S                  |
| Boom cylinder lock                                     | S                  |
| Emergency steering                                     | S                  |
| Emergency stop: 1 in cab, 2 on external                | S                  |
| Extinguisher brackets (x3)                             | S                  |
| Fire suppression system                                | 0                  |
| Fuse board protection - MHT's                          | S                  |
| High visibility reflective strips                      | S                  |
| Loose wheel nut indicators                             | S                  |
| Marking - Warning & Danger decals                      | S                  |
| Mining protection grids: right, left and back windows  | S                  |
| Negative brakes on front & rear axles                  | S                  |
| Steel Protection Guards on all working and road lights | S                  |
| System with attachments recognition (E-reco)           | S                  |
| Wheel chocks   | S                  |

# Ausstattung

## Standard

"Guardian Angel" System Level 1  
360° visibility safety system  
Battery + Starter Isolators + Jump Start Receptacle  
Boom cylinder lock  
Brake Lights ON When Park Brake ON  
Clamp predisposition (controls from cabin)  
Emergency steering  
Emergency stop: 1 in cab, 2 on external  
Extinguisher brackets (x3)  
Flat Led Rotating Beacon  
Fuse board protection - MHT's  
High visibility reflective strips  
LED Flashing Lights On Cabin (Marker Lights)  
LED tramping lights  
LED work lights on the boom (x2)  
LED working lights on cab (x4 : 2 front + 2 rear)  
Loose wheel nut indicators  
Marking - Warning & Danger decals  
Mining protection grids: right, left and back windows  
Negative brakes on front & rear axles  
Radiator safety cap  
Roof and Windshield Guard  
Stainless steel tool box  
Steel Protection Guards on all working and road lights  
System with attachments recognition (E-reco)  
Wheel chocks  
Working platform predisposition with remote control

## Optional

Automatic Greasing System (AGS) - chassis + boom  
Camera in boom head with screen in cab  
Comfort Ride Control (CRC) boom suspension  
Fire suppression system  
Hydraulic hose sleeve burst protection



**Hauptsitz**

B.P. 249 - 430 rue de l'Aubinière

44150 Ancenis Cedex - France

Tel: +33 (0)2 40 09 10 11 - Fax: +33 (0)2 40 09 10 97

[www.manitou.com](http://www.manitou.com)



Diese Publikation enthält eine Beschreibung der Konfigurationsvarianten und Optionen für Manitou-Produkte, die je nach Ausstattung unterschiedlich sein können. Die in dieser Broschüre vorgestellten Ausstattungen können Teil einer Serie, als Option erhältlich oder je nach Ausführung nicht verfügbar sein. Manitou behält sich das Recht vor, die beschriebenen und dargestellten Spezifikationen jederzeit und ohne Vorankündigung zu ändern. Die angegebenen Spezifikationen sind für den Hersteller nicht bindend. Für weitere Einzelheiten wenden Sie sich bitte an Ihren Manitou-Händler. Es handelt sich nicht um ein vertraglich bindendes Dokument. Die Darstellung der Produkte ist vertraglich nicht bindend. Die Liste der Spezifikationen ist nicht vollständig. Die Logos sowie die visuelle Identität des Unternehmens sind Eigentum von Manitou und dürfen nicht ohne Genehmigung verwendet werden. Alle Rechte vorbehalten. Die in dieser Broschüre enthaltenen Fotos und Diagramme werden nur zu Anschauungs- und Informationszwecken zur Verfügung gestellt.

MANITOU BF SA - Gesellschaft mit beschränkter Haftung mit Verwaltungsrat - Aktienkapital: 39 668 399 Euro - 857 802 508 RCS Nantes