

Technical sheet :

160 ATJ+ E

OXYGEN



 **MANITOU**
HANDLING YOUR WORLD

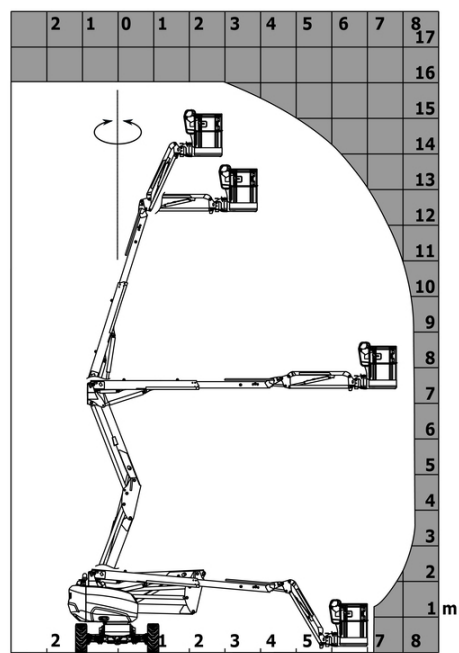
| Capacities | | Metric |
|---|---------|--|
| Working height | h21 | 16.22 m |
| Floor height (access) | h20 | 0.42 m |
| Platform height | h7 | 14.26 m |
| Max. outreach | | 8.34 m |
| Overhang | | 7.44 m |
| Pendular arm rotation (left / right) | | 90 ° / 90 ° |
| Pendular arm rotation (top / bottom) | | +66.50 ° / -65.80 ° |
| Platform capacity | Q | 408 kg |
| Turret rotation | | 350 ° |
| Platform rotation (right / left) | | 90 ° / 90 ° |
| Number of people (indoor / outdoor) | | 3 / 3 |
| Weight and dimensions | | |
| Platform weight* | | 7790 kg |
| Platform dimensions (length x width) | lp / ep | 2.30 m x 0.90 m |
| Overall length | l1 | 6.88 m |
| Overall width | b1 | 2.38 m |
| Overall height | h17 | 2.48 m |
| Overall length (stowed) | l9 | 4.70 m |
| Overall height (stowed) | h18 | 2.94 m |
| Counterweight offset (turret at 90°) | a7 | 0.37 m |
| Counterweight Oversize / Reach | | 0.37 m |
| External turning radius | Wa3 | 3.78 m |
| Ground clearance at centre of wheelbase | m2 | 0.39 m |
| Wheelbase | y | 2.30 m |
| Performances | | |
| Drive speed - stowed | | 5.30 km/h |
| Drive speed - raised | | 0.70 km/h |
| Gradeability | | 45 % |
| Permissible leveling | | 5 ° |
| Wheels | | |
| Tires type | | Foam-filled |
| Standard tires | | 914 x 370 mm |
| Drive wheels (front / rear) | | 2 / 2 |
| Steering wheels (front / rear) | | 2 / 2 |
| Braking wheels (front / rear) | | 0 / 2 |
| Engine/Battery | | |
| Battery voltage | | 48 V |
| Battery nominal voltage / capacity | | 48 V / 480 Ah |
| Battery energy | | 23 kWh |
| Integrated charger / charger | | 48 V / 60 A |
| Miscellaneous | | |
| Ground Pressure | | 10.60 dan/cm2 |
| Hydraulic Pressure | | 250 bar |
| Hydraulic tank capacity | | 24 l |
| Standards compliance | | |
| This machine is in compliance with: | | European directives: 2006/42/EC- Machinery (revised EN280:2013) - 2004/108/EC (EMC) - 2006/95/EC (Low voltage) |

*Varies according to options and standards of the country to which the machine is delivered

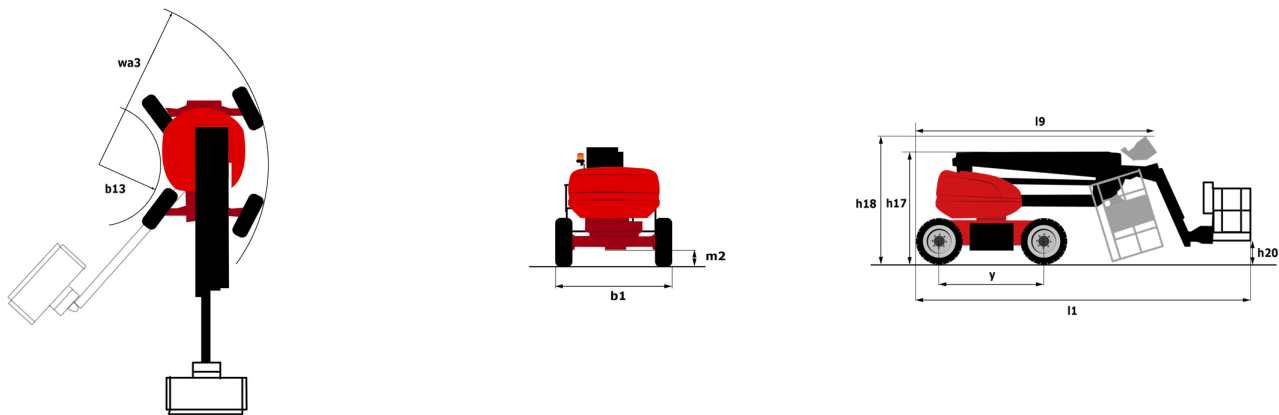
** According to "REDUCE cycle"

160 ATJ+ e - Load chart

Load Chart for MEWP Metric



160 ATJ+ e - Dimensional drawing



Equipment

| Standard |
|---|
| 220V predisposition in the platform |
| 4 simultaneous movements |
| 4 wheel drive |
| 4 wheel steer with crab mode |
| Audible alarm and illuminated indicator lamp (leveling, overload, lowering) |
| Backup electrical pump |
| Basket 1,800 mm |
| CAN bus technology |
| Dead man pedal |
| Differential locking on rear axle |
| Easy Link with 2 year Service |
| Easy Manager |
| Emergency stop button in platform and on frame |
| Front axle with limited slip |
| Fully galvanized basket with demountable floor |
| Hom in the platform |
| Hour meter |
| LED rotating beacon |
| Leveling unlocking |
| Load sensing pump |
| Oscillating front axle |
| Screen information in the basket |
| Secondary Protection System (SPS) |
| Simplified lifting system without spreader bar |
| Slinging and securing rings |
| Steer and rotate |
| Turret orientation information |

| Optional |
|--|
| 18" tyres |
| Beep on forward and backward by Lynx alarm |
| Biodegradable hydraulic oil - Grade 32 |
| Biodegradable oil |
| Bottom screen protection |
| Continuous turret rotation |
| Digicode anti-theft device |
| Easy Link - With access control keypad |
| Easy link - With remote lock |
| Electric centralized filling |
| External pneumatic supply source |
| Fully galvanized basket 1800mm / 5'11" with lateral door |
| Galvanized basket 2,100 mm |
| Galvanized basket 2.100 mm / 6'11" with lateral door |
| Key lock on turret cover |
| Lighting pack |
| Locking the telescope by parameter setting |
| OSS - Operation Safety System |
| Personalized paintwork |
| Safety kit - Harness + helmet |
| Water predisposition |



Head Office

B.P. 249 - 430 rue de l'Aubinière

44150 Ancenis Cedex - France

Tel: +33 (0)2 40 09 10 11 - Fax: +33 (0)2 40 09 10 97

www.manitou.com



This publication provides a description of the configuration versions and options for Manitou products, which may differ for equipment. The equipment presented in this brochure may be part of a series, as an option, or it may not be available, depending on the versions. Manitou reserves the right, at any time and without notice, to amend the specifications described and represented. The specifications provided do not bind the manufacturer. For more details, please contact your Manitou agent. This is not a contractually binding document. The presentation of the products is not contractually binding. List of specifications non-exhaustive. The logos as well as the visual identity of the company are owned by Manitou and cannot be used without authorisation. All rights reserved. The photos and diagrams contained in this brochure are only provided for consultation and information purposes.

MANITOU BF SA - Limited company with board of directors - Share capital: 39,668,399 euros - 857 802 508 RCS Nantes