

Technical sheet :

MLT-X 850-145 V+

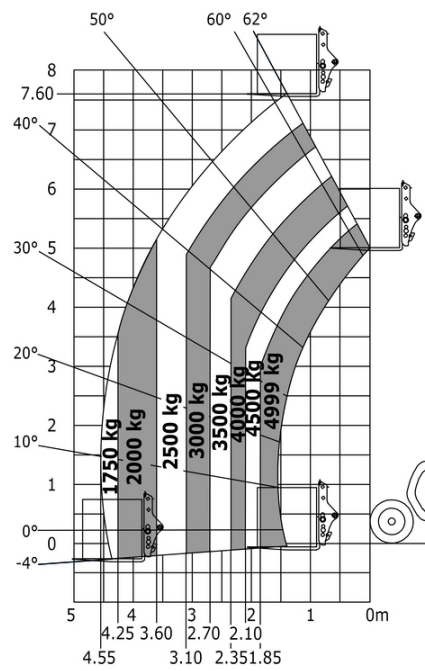


 **MANITOU**
HANDLING YOUR WORLD

| Capacities | | Metric |
|--|-----|--|
| Max. capacity | Q | 4999 kg |
| Max. lifting height | h3 | 7.60 m |
| Max. outreach | | 4.55 m |
| Reach at max. height | | 4.55 m |
| Breakout force with bucket | | 8670 daN |
| Weight and dimensions | | |
| Unladen weight (with forks) | | 10780 kg |
| Ground clearance | m4 | 0.45 m |
| Wheelbase | y | 2.94 mm |
| Overall length to carriage (with hitch) | l11 | 5.57 m |
| Overall length to carriage (without hitch) | l3 | 5.54 m |
| Front overhang | | 1.55 mm |
| Overall width | b1 | 2.49 m |
| Overall cab width | b4 | 0.99 m |
| Overall height | h17 | 2.58 m |
| Tilt-down angle | a5 | 132 ° |
| Tilt-up angle | a4 | 12 ° |
| External turning radius (over tyres) | Wa1 | 4.04 m |
| Standard tires | | Alliance - A580 - 500/70 R24 164A8 |
| Drive wheels (front / rear) | | 2 / 2 |
| Steering wheels (front / rear) | | 2 / 2 |
| Performances | | |
| Lifting | | 6.60 s |
| Lowering | | 4.90 s |
| Extension | | 6.30 s |
| Retraction | | 6.30 s |
| Crowd | | 4.20 s |
| Dump | | 3.10 s |
| Engine | | |
| Engine brand | | Yanmar |
| Engine norm | | Stage IIIA |
| Engine model | | 4TN107HT-5SMUF |
| Number of cylinders - Capacity of cylinders | | 4 - 4567 cm³ |
| I.C. Engine power rating / Power | | 141 Hp / 105 kW |
| Max. torque / Engine rotation | | 602 Nm @1500 rpm |
| Drawbar pull (Laden) | | 9160 daN |
| Reversible fan | | Standard |
| Engine cooling system | | 3 radiators water + intercooler + transmission oil |
| Transmission | | |
| Transmission type | | Continuously variable transmission |
| Gearbox | | M-Vario Plus |
| Max. travel speed (may vary according to applicable regulations) | | 40 km/h |
| Differential lock | | Limited slip differential on front and rear axles |
| Parking brake | | Automatic negative parking brake |
| Service brake | | Oil-immersed multi-discs braking on front & rear axles |
| Hydraulics | | |
| Hydraulic pump type | | Variable displacement pump |
| Hydraulic flow - Pressure | | 200 l/min - 270 bar |
| Flow sharing distributor | | Standard |
| Tank capacities | | |
| Hydraulic oil | | 141 l |
| Fuel tank | | 142 l |
| Noise and vibration | | |
| Noise to environment (LWA) | | 105 dB |
| Vibration to whole hand/arm | | < 2.50 m/s² |
| Miscellaneous | | |
| Tractor homologation | | Tractor homologation |
| Safety cab homologation | | ROPS - FOPS level 2 cab |
| Controls | | JSM |

MLT-X 850-145 V+ - Load chart

Machine on tyres with forks Metric





Head Office

B.P. 249 - 430 rue de l'Aubinière

44150 Ancenis Cedex - France

Tel: +33 (0)2 40 09 10 11 - Fax: +33 (0)2 40 09 10 97

www.manitou.com



This publication provides a description of the configuration versions and options for Manitou products, which may differ for equipment. The equipment presented in this brochure may be part of a series, as an option, or it may not be available, depending on the versions. Manitou reserves the right, at any time and without notice, to amend the specifications described and represented. The specifications provided do not bind the manufacturer. For more details, please contact your Manitou agent. This is not a contractually binding document. The presentation of the products is not contractually binding. List of specifications non-exhaustive. The logos as well as the visual identity of the company are owned by Manitou and cannot be used without authorisation. All rights reserved. The photos and diagrams contained in this brochure are only provided for consultation and information purposes.

MANITOU BF SA - Limited company with board of directors - Share capital: 39,668,399 euros - 857 802 508 RCS Nantes