

Technical sheet :

220 TJ ST5

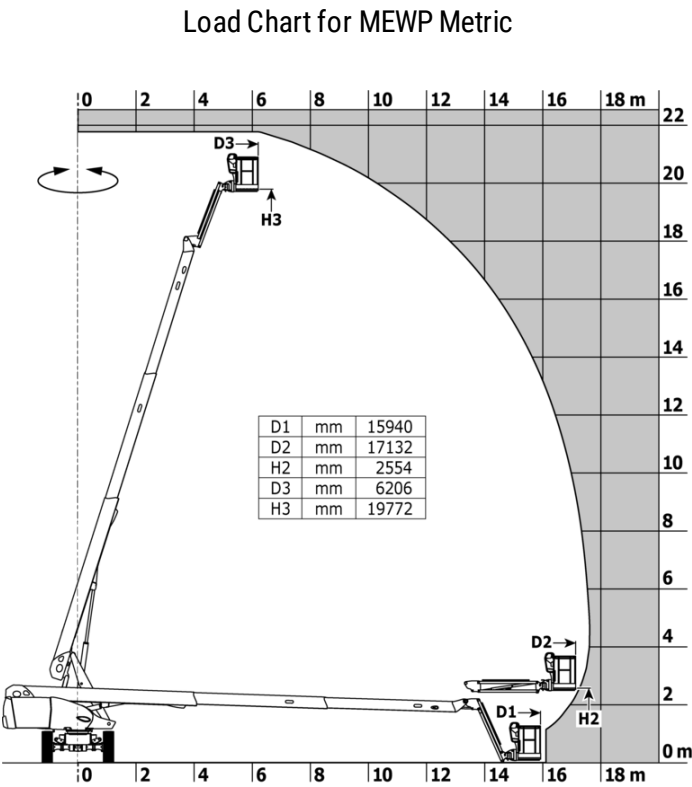


 **MANITOU**
HANDLING YOUR WORLD

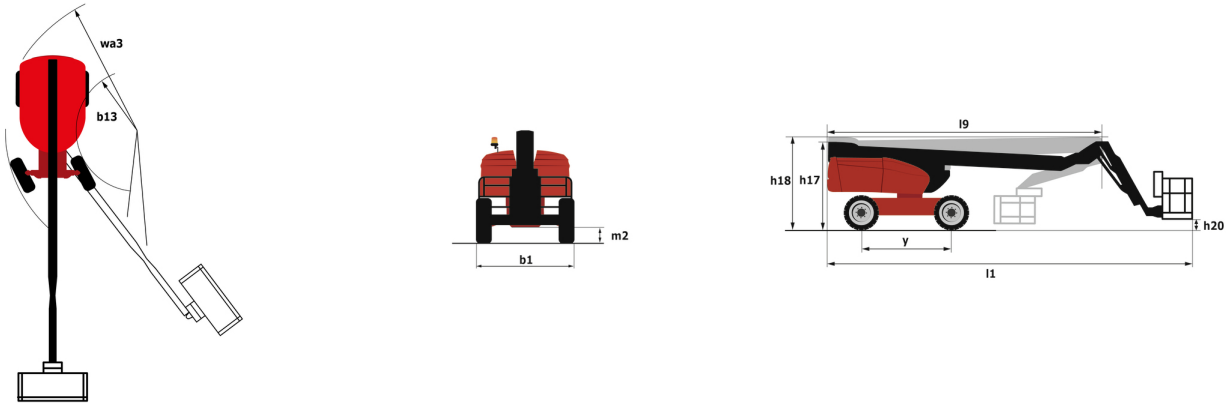
| Capacities | | Metric |
|--|---------|---|
| Working height | h21 | 21.77 m |
| Platform height | h7 | 19.77 m |
| Maximum outreach | | 17.63 m |
| Pendular arm rotation (top / bottom) | | +69 ° / -66 ° |
| Platform capacity | Q | 230 kg |
| Turret rotation | | 360 ° |
| Platform rotation (right / left) | | 90 ° / 90 ° |
| Number of people (indoor / outdoor) | | 2 / 2 |
| Weight and dimensions | | |
| Platform weight* | | 12000 kg |
| Platform dimensions (length x width) | lp / ep | 2.10 m x 0.76 m |
| Floor height (access) | h20 | 0.39 m |
| Overall length | l1 | 9.81 m |
| Overall width | b1 | 2.48 m |
| Overall height | h17 | 2.66 m |
| Overall length (stowed) | l9 | 7.29 m |
| Overall height (stowed) | h18 *** | 2.72 m |
| Jib length | l13 | 2 m |
| Counterweight offset (turret at 90°) | a7 | 1.35 m |
| External turning radius | Wa3 | 6.19 m |
| Ground clearance at centre of wheelbase | m2 | 0.44 m |
| Wheelbase | y | 2.80 m |
| Performances | | |
| Drive speed - stowed | | 4.40 km/h |
| Drive speed - raised | | 1 km/h |
| Gradeability | | 40 % |
| Permissible leveling | | 4 ° |
| Wheels | | |
| Tires type | | Solid Tires Cured-On |
| Standard tires | | 40 x 14 in / 1025 x 365 mm |
| Drive wheels (front / rear) | | 2 / 2 |
| Steering wheels (front / rear) | | 2 / 0 |
| Braking wheels (front / rear) | | 0 / 2 |
| Engine/Battery | | |
| Engine brand / model | | Yanmar - 3TNV88C |
| Engine norm | | Stage V |
| I.C. Engine power rating / Power | | 37 Hp / 27.50 kW |
| Miscellaneous | | |
| Ground Pressure | | 18.20 dan/cm2 |
| Hydraulic Pressure | | 340 bar |
| Hydraulic tank capacity | | 94 l |
| Fuel tank | | 76 l |
| Sound pressure level (platform work station) (LpA) | | 82 dB |
| Daily consumption ** | | 5.48 l |
| Standards compliance | | |
| This machine is in compliance with: | | European directives: 2006/42/EC- Machinery (revised EN280-1:2022) - 2004/108/EC (EMC) - EMC according to EN 12895 / 2015 +A1 / 2019 |

*Varies according to options and standards of the country to which the machine is delivered

220 TJ ST5 - Load chart



220 TJ ST5 - Dimensional drawing



Equipment

| Standard |
|--|
| 230V Predisposition |
| 4 simultaneous movements |
| 4 wheel drive |
| Audible alarm and illuminated indicator lamp (leveling, overload, lowering) |
| Backup electrical pump |
| Connected machine |
| Continuous turret rotation |
| Dead man pedal |
| Differential locking on rear axle |
| Easy fast slinging system |
| Electronic platform compensation |
| Emergency stop button in platform and on frame |
| Engine compartment with key lock |
| Engine mounted on sliding platform |
| Engine with DPF (Diesel Particulate Filter) |
| Front axle with limited slip |
| Fuel gauge with low level indicator |
| Fully galvanized basket with removable floor - Width: 2100 mm (6 ft. 11 in.) |
| Hour meter |
| Hydraulic oil heater |
| Integrated diagnostic assistance |
| LED rotating beacon |
| LS pump |
| Large color screen on turret |
| Leveling unlocking |
| Oscillating front axle |
| Proportional controls |
| Secondary Protection System (SPS) |
| Stop & Go system |
| Turret orientation information |
| Yellow and black safety stickers on moving parts |

| Optional |
|--|
| 110 or 230V plug with differential circuit breaker |
| Audio warning on all motion |
| Audio warning on translation |
| Battery blanket |
| Battery cut-off |
| Biodegradable hydraulic oil - Grade 32 |
| Earthing and shortcircuiting pre-fitting (Bolted ball) |
| Easy Link - With access control keypad |
| Easy link with remote lock |
| Engine Block Heater |
| External pneumatic supply source |
| Galvanized basket with side swing gate - Width: 2100 mm (6 ft. 11 in.) |
| Hydraulic oil for cold temperature |
| Hydraulic oil heater |
| Key lock on fuel tank |
| LED amber strobe light on the basket |
| LED work light - On basket |
| Non marking solid tyres |
| On-board generator (3,5 or 5 kW) |
| Packing for containerization |
| Personalized paintwork |
| Rail protection |
| Reflective stripes |
| Remote control for transport |
| Safety kit - Harness + helmet |
| Safety valve |
| Screen protection on the lower box control |
| Starter battery charger and engine pre-heater with common outlet |
| Water predisposition |
| Working light |



Head Office

B.P. 249 - 430 rue de l'Aubinière

44150 Ancenis Cedex - France

Tel: +33 (0)2 40 09 10 11 - Fax: +33 (0)2 40 09 10 97

www.manitou.com



This publication provides a description of the configuration versions and options for Manitou products, which may differ for equipment. The equipment presented in this brochure may be part of a series, as an option, or it may not be available, depending on the versions. Manitou reserves the right, at any time and without notice, to amend the specifications described and represented. The specifications provided do not bind the manufacturer. For more details, please contact your Manitou agent. This is not a contractually binding document. The presentation of the products is not contractually binding. List of specifications non-exhaustive. The logos as well as the visual identity of the company are owned by Manitou and cannot be used without authorisation. All rights reserved. The photos and diagrams contained in this brochure are only provided for consultation and information purposes.

MANITOU BF SA - Limited company with board of directors - Share capital: 39,668,399 euros - 857 802 508 RCS Nantes