

Technical sheet :

160 ATJ+ RC



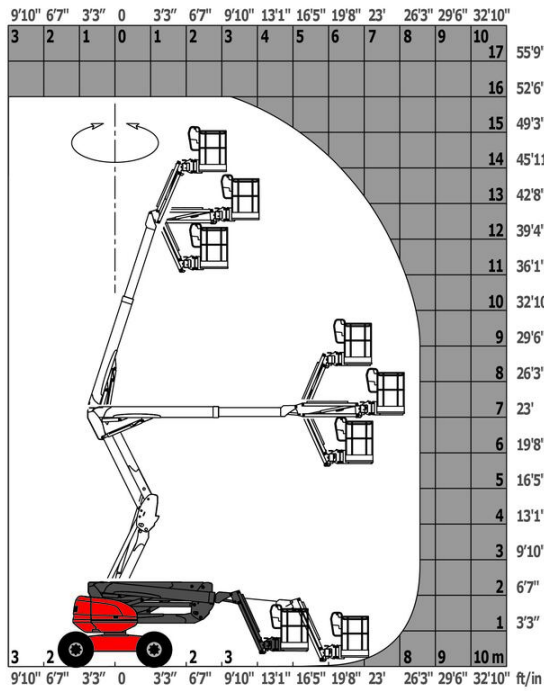
 **MANITOU**
HANDLING YOUR WORLD

| Capacities | | Metric |
|---|---------|--|
| Working height | h21 | 16.21 m |
| Platform height | h7 | 14.21 m |
| Max. outreach | | 8.52 m |
| Overhang | | 7.39 m |
| Pendular arm rotation (top / bottom) | | +66.50 ° / -65.80 ° |
| Platform capacity | Q | 408 kg |
| Turret rotation | | 360 ° |
| Platform rotation (right / left) | | 90 ° / 90 ° |
| Number of people (indoor / outdoor) | | 3 / 3 |
| Weight and dimensions | | |
| Platform weight* | | 7500 kg |
| Platform dimensions (length x width) | lp / ep | 2.30 m x 0.90 m |
| Floor height (access) | h20 | 0.38 m |
| Overall length | l1 | 7.09 m |
| Overall width | b1 | 2.38 m |
| Overall height | h17 | 2.47 m |
| Overall length (stowed) | l9 | 4.89 m |
| Overall height (stowed) | h18 *** | 2.94 m |
| Counterweight offset (turret at 90Å°) | a7 | 0.19 m |
| External turning radius | Wa3 | 4.03 m |
| Ground clearance at centre of wheelbase | m2 | 0.40 m |
| Wheelbase | y | 2.20 m |
| Performances | | |
| Drive speed - stowed | | 5 km/h |
| Drive speed - raised | | 1 km/h |
| Gradeability | | 45 % |
| Permissible leveling | | 5 ° |
| Wheels | | |
| Tires type | | Foam-filled |
| Drive wheels (front / rear) | | 2 / 2 |
| Steering wheels (front / rear) | | 2 / 2 |
| Braking wheels (front / rear) | | 0 / 2 |
| Engine/Battery | | |
| Engine brand / model | | Kubota - D1105-E4B |
| Engine norm | | Stage V |
| I.C. Engine power rating / Power | | 24.50 Hp / 18.50 kW |
| Miscellaneous | | |
| Ground Pressure | | 11.60 dan/cm2 |
| Hydraulic Pressure | | 340 bar |
| Hydraulic tank capacity | | 54.20 l |
| Fuel tank | | 52 l |
| Noise to environment (LwA) | | < 105 dB |
| Vibration on hands/arms | | < 0.50 m/s ² |
| Daily consumption ** | | 4.51 l |
| Standards compliance | | |
| This machine is in compliance with: | | European directives: 2006/42/EC- Machinery (revised EN280-1:2022) - 2004/108/EC (EMC) - 2006/95/EC (Low voltage) |

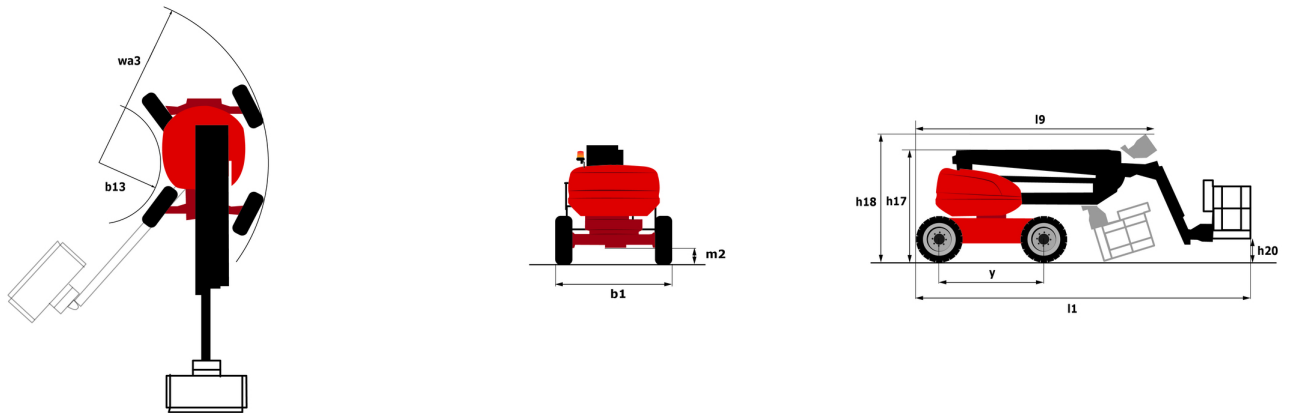
*Varies according to options and standards of the country to which the machine is delivered

160 ATJ+ RC - Load chart

Load Chart for MEWP Metric



160 ATJ+ RC - Dimensional drawing



Equipment

Standard

230V Predisposition
4 simultaneous movements
4 wheel drive
4 wheel steer with crab mode
Audible alarm and illuminated indicator lamp (leveling, overload, lowering)
Backup electrical pump
CAN bus technology
Continuous turret rotation
Dead man pedal
Differential locking on rear axle
Easy Link with 2 year Service
Easy fast slinging system
Front axle with limited slip
Fuel gauge with low level indicator
Heavy-duty painted basket 2.30 m
Hom in the platform
Hour meter
Integrated diagnostic assistance
LED rotating beacon
Large basket with three entries
Large color screen on turret
Leveling unlocking
Management via engine speed bearing
Oscillating front axle
Secondary Protection System (SPS)
Stop & Go system

Optional

Additional storage boxes
Battery blanket
Battery charger automatic start
Biodegradable hydraulic oil - Grade 32
Coded anti-start
High capacity starting battery
Hydraulic oil heater
Key lock on turret cover
Large basket 2.30m with lateral door
Lockable fuel cap
Non-marking tyres
On-board generator (3,5 or 5 kW)
Painted narrow basket for heavy loads 1800mm (5 ft 11 in.)
Panel cradle
Personalized paintwork
Pipe cradle
Protection screen and key lock turret
Safety kit - Harness + helmet
Socket 230 V+ differential circuit breaker
Spark arresting muffler
Water heater
Water predisposition



Head Office

B.P. 249 - 430 rue de l'Aubinière

44150 Ancenis Cedex - France

Tel: +33 (0)2 40 09 10 11 - Fax: +33 (0)2 40 09 10 97

www.manitou.com



This publication provides a description of the configuration versions and options for Manitou products, which may differ for equipment. The equipment presented in this brochure may be part of a series, as an option, or it may not be available, depending on the versions. Manitou reserves the right, at any time and without notice, to amend the specifications described and represented. The specifications provided do not bind the manufacturer. For more details, please contact your Manitou agent. This is not a contractually binding document. The presentation of the products is not contractually binding. List of specifications non-exhaustive. The logos as well as the visual identity of the company are owned by Manitou and cannot be used without authorisation. All rights reserved. The photos and diagrams contained in this brochure are only provided for consultation and information purposes.

MANITOU BF SA - Limited company with board of directors - Share capital: 39,668,399 euros - 857 802 508 RCS Nantes