

Technical sheet :

160 ATJ+ RC



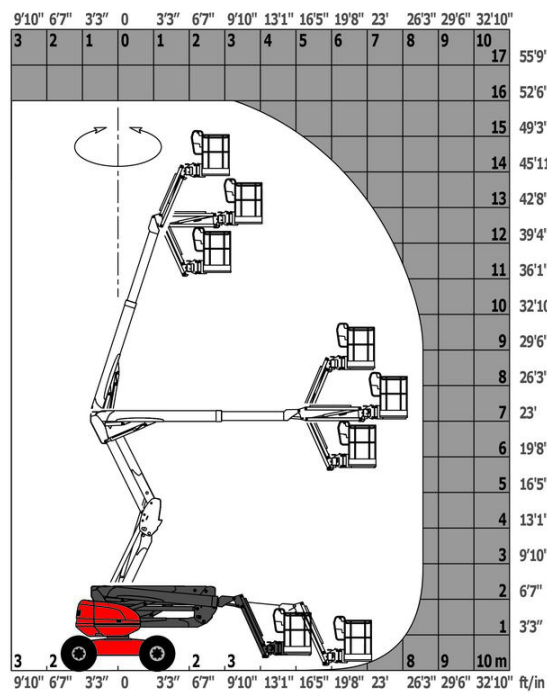
 **MANITOU**
HANDLING YOUR WORLD

| Capacities | | Metric |
|-----------------------------------------|---------|------------------------------------------------------------------------------------------------------------------|
| Working height | h21 | 16.21 m |
| Platform height | h7 | 14.21 m |
| Maximum outreach | | 8.52 m |
| Overhang | | 7.39 m |
| Pendular arm rotation (top / bottom) | | +66.50 ° / -65.80 ° |
| Platform capacity | Q | 408 kg |
| Turret rotation | | 360 ° |
| Platform rotation (right / left) | | 90 ° / 90 ° |
| Number of people (indoor / outdoor) | | 3 / 3 |
| Weight and dimensions | | |
| Platform weight* | | 7500 kg |
| Platform dimensions (length x width) | lp / ep | 2.30 m x 0.90 m |
| Floor height (access) | h20 | 0.38 m |
| Overall length | l1 | 7.09 m |
| Overall width | b1 | 2.38 m |
| Overall height | h17 | 2.47 m |
| Overall length (stowed) | l9 | 4.89 m |
| Overall height (stowed) | h18 *** | 2.94 m |
| Counterweight offset (turret at 90Å°) | a7 | 0.19 m |
| External turning radius | Wa3 | 4.03 m |
| Ground clearance at centre of wheelbase | m2 | 0.40 m |
| Wheelbase | y | 2.20 m |
| Performances | | |
| Drive speed - stowed | | 5 km/h |
| Drive speed - raised | | 1 km/h |
| Gradeability | | 45 % |
| Permissible leveling | | 5 ° |
| Wheels | | |
| Tires type | | Foam-filled |
| Drive wheels (front / rear) | | 2 / 2 |
| Steering wheels (front / rear) | | 2 / 2 |
| Braking wheels (front / rear) | | 0 / 2 |
| Engine/Battery | | |
| Engine brand / model | | Kubota - D1105-E4B |
| Engine norm | | Stage V |
| I.C. Engine power rating / Power | | 24.50 Hp / 18.50 kW |
| Miscellaneous | | |
| Ground Pressure | | 11.60 dan/cm2 |
| Hydraulic Pressure | | 340 bar |
| Hydraulic tank capacity | | 54.20 l |
| Fuel tank | | 52 l |
| Noise to environment (LwA) | | < 105 dB |
| Vibration on hands/arms | | < 0.50 m/s² |
| Daily consumption ** | | 4.51 l |
| Standards compliance | | |
| This machine is in compliance with: | | European directives: 2006/42/EC- Machinery (revised EN280-1:2022) - 2004/108/EC (EMC) - 2006/95/EC (Low voltage) |

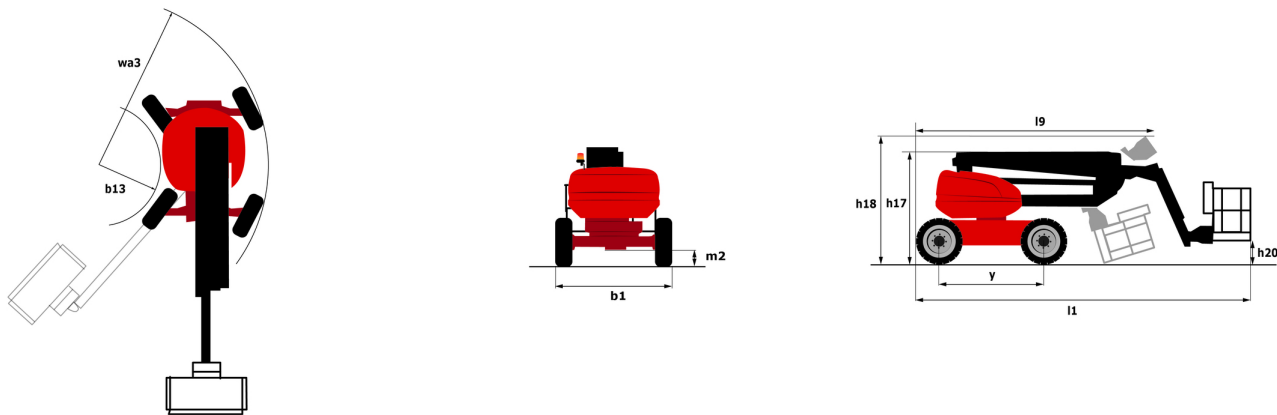
*Varies according to options and standards of the country to which the machine is delivered

160 ATJ+ RC - Load chart

Load Chart for MEWP Metric



160 ATJ+ RC - Dimensional drawing



Equipment

| Standard |
|-----------------------------------------------------------------------------|
| 230V Predisposition |
| 4 simultaneous movements |
| 4 wheel drive |
| 4 wheel steer with crab mode |
| Audible alarm and illuminated indicator lamp (leveling, overload, lowering) |
| Backup electrical pump |
| CAN bus technology |
| Continuous turret rotation |
| Dead man pedal |
| Differential locking on rear axle |
| Easy Link with 2 year Service |
| Easy fast slinging system |
| Engine compartment with key lock |
| Front axle with limited slip |
| Fuel gauge with low level indicator |
| Heavy-duty painted basket 2.30 m |
| Hom in the platform |
| Hour meter |
| Integrated diagnostic assistance |
| LED rotating beacon |
| Large basket with three entries |
| Large color screen on turret |
| Leveling unlocking |
| Management via engine speed bearing |
| Oscillating front axle |
| Secondary Protection System (SPS) |
| Stop & Go system |

| Optional |
|------------------------------------------------------------|
| Additional storage boxes |
| Battery blanket |
| Battery charger automatic start |
| Biodegradable hydraulic oil - Grade 32 |
| Coded anti-start |
| High capacity starting battery |
| Hydraulic oil heater |
| Large basket 2.30m with lateral door |
| Lockable fuel cap |
| Non-marking tyres |
| On-board generator (3,5 or 5 kW) |
| Painted narrow basket for heavy loads 1800mm (5 ft 11 in.) |
| Panel cradle |
| Personalized paintwork |
| Pipe cradle |
| Protection screen and key lock turret |
| Safety kit - Harness + helmet |
| Socket 230 V + differential circuit breaker |
| Spark arresting muffler |
| Water heater |
| Water predisposition |



Head Office

B.P. 249 - 430 rue de l'Aubinière

44150 Ancenis Cedex - France

Tel: +33 (0)2 40 09 10 11 - Fax: +33 (0)2 40 09 10 97

www.manitou.com



This publication provides a description of the configuration versions and options for Manitou products, which may differ for equipment. The equipment presented in this brochure may be part of a series, as an option, or it may not be available, depending on the versions. Manitou reserves the right, at any time and without notice, to amend the specifications described and represented. The specifications provided do not bind the manufacturer. For more details, please contact your Manitou agent. This is not a contractually binding document. The presentation of the products is not contractually binding. List of specifications non-exhaustive. The logos as well as the visual identity of the company are owned by Manitou and cannot be used without authorisation. All rights reserved. The photos and diagrams contained in this brochure are only provided for consultation and information purposes.

MANITOU BF SA - Limited company with board of directors - Share capital: 39,668,399 euros - 857 802 508 RCS Nantes