

Fiche technique :

# 160 ATJ+ RC



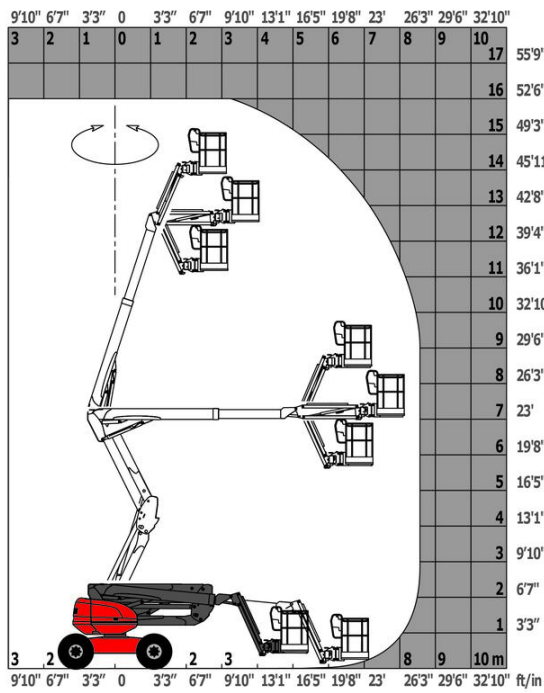
 **MANITOU**  
HANDLING YOUR WORLD

| Capacités                               |         | Métrique   |
|---|---------|--|
| Working height                          | h21     | 16.21 m  |
| Platform height                         | h7      | 14.21 m  |
| Max. outreach                           |         | 8.52 m   |
| Overhang                                |         | 7.39 m   |
| Pendular arm rotation (top / bottom)    |         | +66.50 ° / -65.80 °  |
| Platform capacity                       | Q       | 408 kg   |
| Turret rotation                         |         | 360 °  |
| Platform rotation (right / left)        |         | 90 ° / 90 °  |
| Number of people (indoor / outdoor)     |         | 3 / 3  |
| Weight and dimensions                   |         |  |
| Platform weight*                        |         | 7500 kg  |
| Platform dimensions (length x width)    | lp / ep | 2.30 m x 0.90 m  |
| Floor height (access)                   | h20     | 0.38 m   |
| Overall length                          | l1      | 7.09 m   |
| Overall width                           | b1      | 2.38 m   |
| Overall height                          | h17     | 2.47 m   |
| Overall length (stowed)                 | l9      | 4.89 m   |
| Overall height (stowed)                 | h18 *** | 2.94 m   |
| Counterweight offset (turret at 90°)    | a7      | 0.19 m   |
| External turning radius                 | Wa3     | 4.03 m   |
| Ground clearance at centre of wheelbase | m2      | 0.40 m   |
| Wheelbase                               | y       | 2.20 m   |
| Performances                            |         |  |
| Drive speed - stowed                    |         | 5 km/h   |
| Drive speed - raised                    |         | 1 km/h   |
| Gradeability                            |         | 45 %   |
| Permissible leveling                    |         | 5 °  |
| Wheels                                  |         |  |
| Tires type                              |         | Foam-filled  |
| Drive wheels (front / rear)             |         | 2 / 2  |
| Steering wheels (front / rear)          |         | 2 / 2  |
| Braking wheels (front / rear)           |         | 0 / 2  |
| Engine/Battery                          |         |  |
| Engine brand / model                    |         | Kubota - D1105-E4B   |
| Engine norm                             |         | Stage V  |
| I.C. Engine power rating / Power        |         | 24.50 Hp / 18.50 kW  |
| Miscellaneous                           |         |  |
| Ground Pressure                         |         | 11.60 dan/cm2  |
| Hydraulic Pressure                      |         | 340 bar  |
| Hydraulic tank capacity                 |         | 54.20 l  |
| Fuel tank                               |         | 52 l   |
| Noise to environment (LwA)              |         | < 105 dB   |
| Vibration on hands/arms                 |         | < 0.50 m/s <sup>2</sup>  |
| Daily consumption **                    |         | 4.51 l   |
| Standards compliance                    |         |  |
| This machine is in compliance with:     |         | European directives: 2006/42/EC- Machinery (revised EN280-1:2022) - 2004/108/EC (EMC) - 2006/95/EC (Low voltage) |

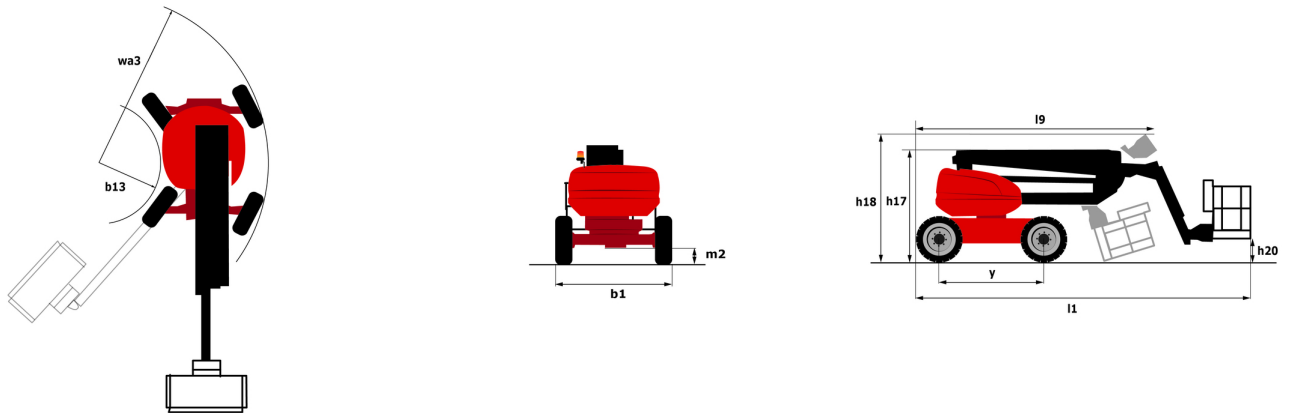
\*Varies according to options and standards of the country to which the machine is delivered

# 160 ATJ+ RC - Abaques

## Load Chart for MEWP Metric



# 160 ATJ+ RC - Schémas d'encombrement



# Équipements

## Standard

230V Predisposition  
4 simultaneous movements  
4 wheel drive  
4 wheel steer with crab mode  
Audible alarm and illuminated indicator lamp (leveling, overload, lowering)  
Backup electrical pump  
CAN bus technology  
Continuous turret rotation  
Dead man pedal  
Differential locking on rear axle  
Easy Link with 2 year Service  
Easy fast slinging system  
Front axle with limited slip  
Fuel gauge with low level indicator  
Heavy-duty painted basket 2.30 m  
Hom in the platform  
Hour meter  
Integrated diagnostic assistance  
LED rotating beacon  
Large basket with three entries  
Large color screen on turret  
Leveling unlocking  
Management via engine speed bearing  
Oscillating front axle  
Secondary Protection System (SPS)  
Stop & Go system

## Optionnel

Additional storage boxes  
Battery blanket  
Battery charger automatic start  
Biodegradable hydraulic oil - Grade 32  
Coded anti-start  
High capacity starting battery  
Hydraulic oil heater  
Key lock on turret cover  
Large basket 2.30m with lateral door  
Lockable fuel cap  
Non-marking tyres  
On-board generator (3,5 or 5 kW)  
Painted narrow basket for heavy loads 1800mm (5 ft 11 in.)  
Panel cradle  
Personalized paintwork  
Pipe cradle  
Protection screen and key lock turret  
Safety kit - Harness + helmet  
Socket 230 V+ differential circuit breaker  
Spark arresting muffler  
Water heater  
Water predisposition



**Siège Social**

B.P. 249 - 430 rue de l'Aubinière

44150 Ancenis Cedex - France

Tel: +33 (0)2 40 09 10 11 - Fax: +33 (0)2 40 09 10 97

[www.manitou.com](http://www.manitou.com)



Cette publication présente le descriptif des versions et possibilités de configuration des produits Manitou qui peuvent différer en équipement. Les équipements présentés dans cette brochure peuvent être de série, en option, ou non disponibles suivant les versions. Manitou se réserve le droit, à tout moment et sans préavis, de modifier les spécifications décrites et représentées. Les spécifications portées n'engagent pas le constructeur. Pour plus de détails, contactez votre concessionnaire Manitou. Document non contractuel. Présentation des produits non contractuelle. Liste des spécifications non exhaustive. Les logos ainsi que l'identité visuelle de l'entreprise sont la propriété de Manitou et ne peuvent être utilisés sans autorisation. Tous droits réservés. Les photos et schémas contenus dans la présente brochure ne sont fournis qu'à des fins de consultation et à titre indicatif.

Manitou BF SA - Société anonyme à conseil d'administration - Capital social : 39 668 399 euros - 857 802 508 RCS Nantes