

Technical sheet :

MRT 1845 115

VISION



 **MANITOU**
HANDLING YOUR WORLD

Capacities		Imperial
Max. capacity		9921 lb
Max. lifting height		59 ft 1 in
Max. outreach		49 ft 10 in
Weight and dimensions		
Overall length (with forks)	l1	23 ft 10 in
Length to face of forks	l2	19 ft 11 in
Overall width	b1	7 ft 11 in
Overall height	h17	10 ft
Overall cab width	b4	3 ft 2 in
Ground clearance	m4	1 ft 3 in
Wheelbase	y	8 ft
Tilt-up angle	a4	10 °
Tilt-down angle	a5	107 °
Turret rotation / rotation (Max.)		400 ° or 360 °
Overall weight		31085 lb
Forks length / width / section	l / e / s	47 in x 5 in x 2 in
Wheels		
Standard tires		405/70-20
Drive wheels (front / rear)		2 / 2
Steering mode		2 wheel steer, 4 wheel steer, Crab mode
Stabilisers		
Stabs Type		Wing Type
Controls with stabs		Stabs Commands Individual or Simultaneous
Engine		
Engine brand		Deutz
Engine norm		Stage V / Tier 4
Engine model		TCD 3.6 L4
I.C. Engine power rating / Power		116 Hp / 85 kW
Max. torque / Engine rotation (min)		339 ft/lbs @ 1600 rpm
Number of cylinders - Capacity of cylinders		4 - 221 in³
Engine cooling system		Water cooled
Electric circuit		
Number of batteries / Battery voltage		2 x 12 V
12V Battery capacity		120 Ah
Battery starting current		(EN)850 A
Transmission		
Transmission type		Hydrostatic
Number of gears (forward / reverse)		2 / 2
Max. travel speed		25 mph
Drawbar pull		9700 daN
Parking brake		Automatic negative parking brake
Service brake		Oil-immersed multi-discs braking on front & rear axles
Performances		
Gradeability (laden / unladen)		46.60 % / 50.90 %
Hydraulics		
Hydraulic pump type		Variable displacement pump
Hydraulic flow		31 US gpm
Hydraulic Pressure		3989 PSI
Tank capacities		
Engine oil		3 US gal
Hydraulic oil		38 US gal
Fuel tank		34 US gal
Diesel Exhaust fluid (AdBlue® type)		3 US gal
Noise and vibration		
Noise at driving position (LpA)		68 dB
Noise to environment (LwA)		106 dB
Vibration to whole hand/arm		< 2.50 m/s²
Miscellaneous		
Steering wheels (front / rear)		2 / 2
Controls		2 Joysticks
Safety cab homologation		ROPS - FOPS level 2 cab
Attachment recognition system (E-Reco)		Standard

MRT 1845 115 - Dimensional drawing



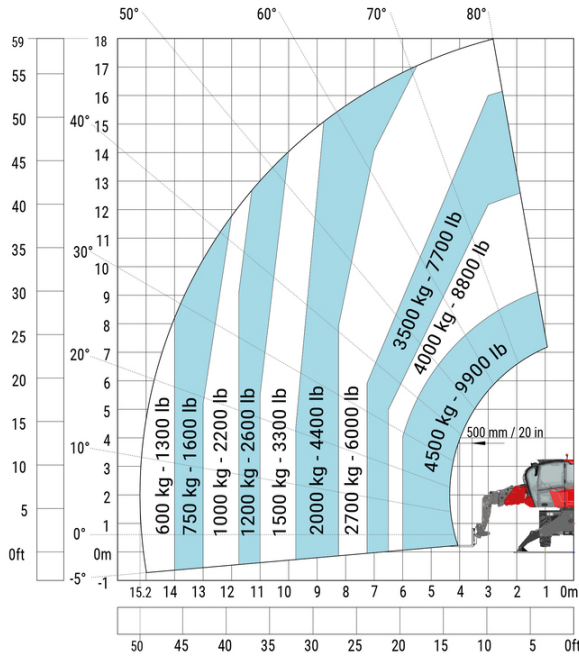
Other data			Imperial
Length of frame		l14	15 ft 4 in
Wheelbase		y	8 ft
Ground clearance		m4	1 ft 3 in
Counterweight offset (turret at 90°)		a7	8 ft 2 in
Tilt-up angle		a4	10 °
Tilt-down angle		a5	107 °
Overall length at stabilisers		l12	14 ft 6 in
External turning radius (over tyres)		Wa1	12 ft 10 in
Overall width with stabilisers extended		b7	13 ft 2 in
Overall height		h17	10 ft
Ground clearance under front tires on stabilizers		m5	7 in

MRT 1845 115 - Load chart

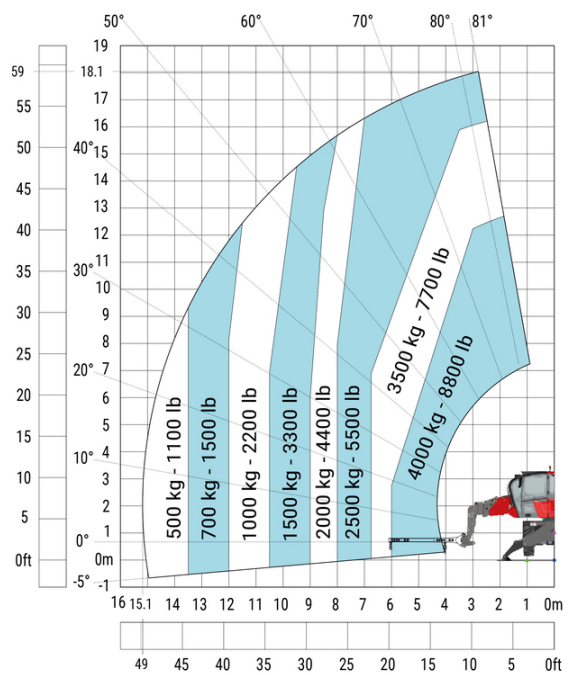
Machine on tyres with forks Imperial



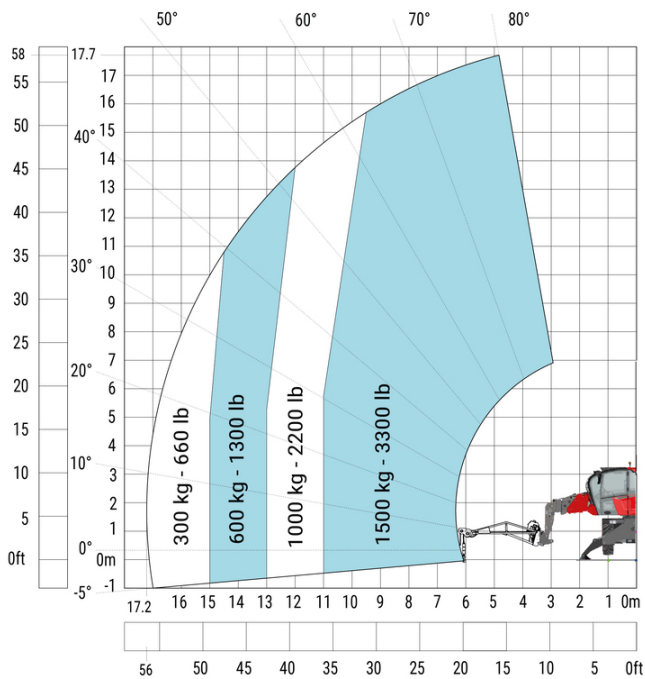
Machine on lowered stabilisers with forks Imperial



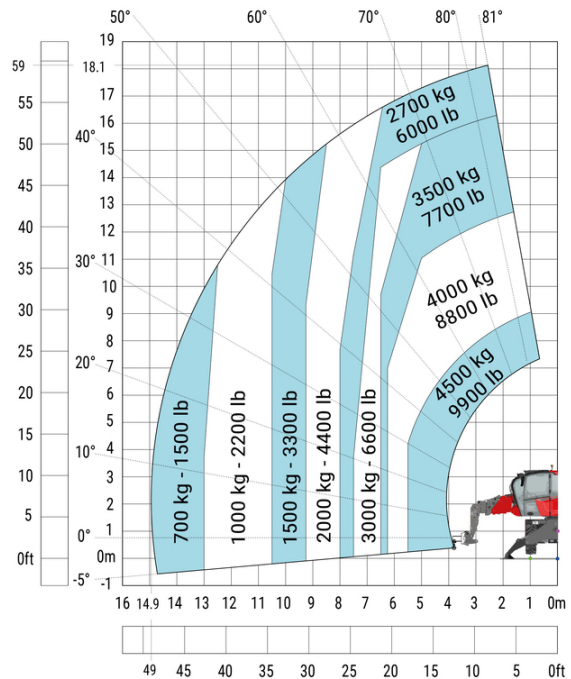
Machine on lowered stabilisers with winch 5000 kg Imperial Machine on lowered stabilisers with 4000 kg jib (Imperial)



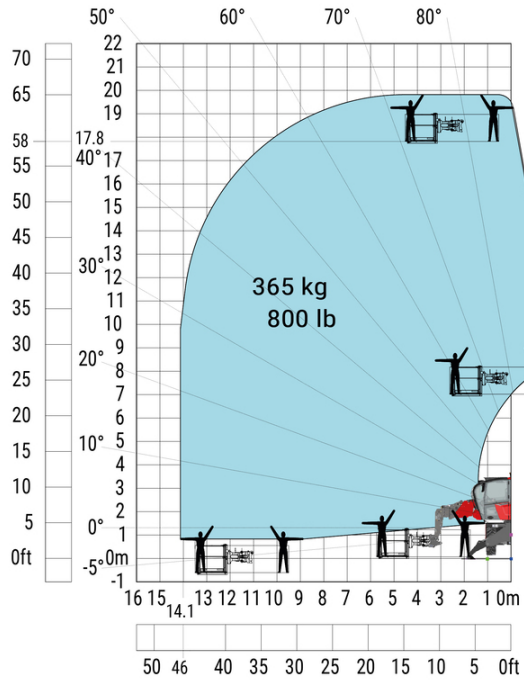
Machine on lowered stabilisers with 1500 kg jib with winch (Imperial)



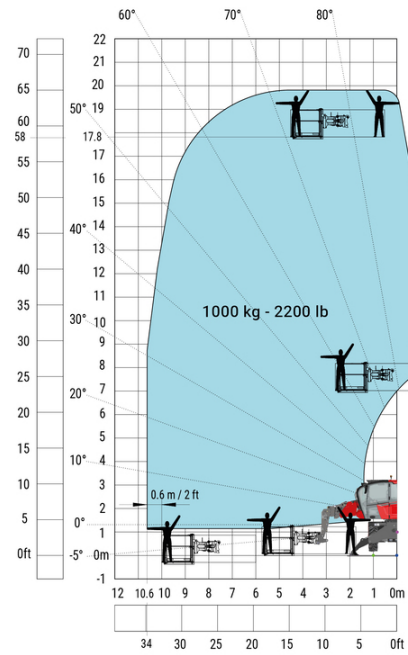
Machine on lowered stabilisers with hook 5000 kg (Imperial)



Machine on lowered stabilisers with 365 kg platform Imperial



Machine on lowered stabilisers with 1000 kg platform Imperial





Head Office

B.P. 249 - 430 rue de l'Aubinière

44150 Ancenis Cedex - France

Tel: +33 (0)2 40 09 10 11 - Fax: +33 (0)2 40 09 10 97

www.manitou.com



This publication provides a description of the configuration versions and options for Manitou products, which may differ for equipment. The equipment presented in this brochure may be part of a series, as an option, or it may not be available, depending on the versions. Manitou reserves the right, at any time and without notice, to amend the specifications described and represented. The specifications provided do not bind the manufacturer. For more details, please contact your Manitou agent. This is not a contractually binding document. The presentation of the products is not contractually binding. List of specifications non-exhaustive. The logos as well as the visual identity of the company are owned by Manitou and cannot be used without authorisation. All rights reserved. The photos and diagrams contained in this brochure are only provided for consultation and information purposes.

MANITOU BF SA - Limited company with board of directors - Share capital: 39,668,399 euros - 857 802 508 RCS Nantes