

Technical sheet :

MRT 2545 115

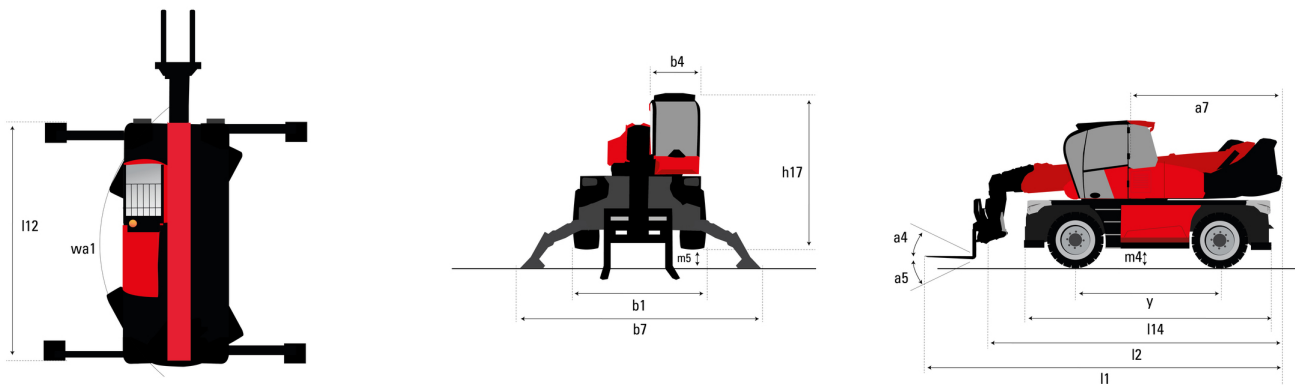
VISION



 **MANITOU**
HANDLING YOUR WORLD

Capacities		Imperial
Max. capacity		9921 lb
Max. lifting height		80 ft 9 in
Max. outreach		64 ft
Weight and dimensions		
Overall length (with forks)	l1	29 ft 3 in
Length to face of forks	l2	25 ft 4 in
Overall width	b1	8 ft 2 in
Overall height	h17	10 ft
Overall cab width	b4	3 ft 2 in
Ground clearance	m4	1 ft 3 in
Wheelbase	y	8 ft 11 in
Tilt-up angle	a4	10 °
Tilt-down angle	a5	107 °
Turret rotation / rotation (Max.)		400 ° or 360 °
Overall weight		35076 lb
Forks length / width / section	l / e / s	47 in x 5 in x 2 in
Wheels		
Standard tires		18-19,5
Drive wheels (front / rear)		2 / 2
Steering mode		2 wheel steer, 4 wheel steer, Crab mode
Stabilisers		
Stabs Type		Spider Type
Controls with stabs		Stabs Commands Individual or Simultaneous
Engine		
Engine brand		Deutz
Engine nom		Stage V / Tier 4
Engine model		TCD 3.6 L4
I.C. Engine power rating / Power		116 Hp / 85 kW
Max. torque / Engine rotation (min)		339 ft/lbs @ 1600 rpm
Number of cylinders - Capacity of cylinders		4 - 221 in ³
Engine cooling system		Water cooled
Electric circuit		
Number of batteries / Battery voltage		2 x 12 V
Battery starting current		(EN)850 A
Transmission		
Transmission type		Hydrostatic
Number of gears (forward / reverse)		2 / 2
Max. travel speed		25 mph
Drawbar pull		9700 daN
Parking brake		Automatic negative parking brake
Service brake		Oil-immersed multi-discs braking on front & rear axles
Performances		
Gradeability (laden / unladen)		48.70 % / 49.80 %
Hydraulics		
Hydraulic pump type		Variable displacement pump
Hydraulic flow		31 US gpm
Hydraulic Pressure		3989 PSI
Tank capacities		
Engine oil		3 US gal
Fuel tank		34 US gal
Diesel Exhaust fluid (AdBlue® type)		3 US gal
Noise and vibration		
Noise at driving position (LpA)		68 dB
Noise to environment (LWA)		106 dB
Vibration on hands/arms		< 2.50 m/s ²
Miscellaneous		
Steering wheels (front / rear)		2 / 2
Controls		2 Joysticks
Safety cab homologation		Cabin ROPS - FOPS level 2
Attachment recognition system (E-Reco)		Standard

MRT 2545 115 - Dimensional drawing

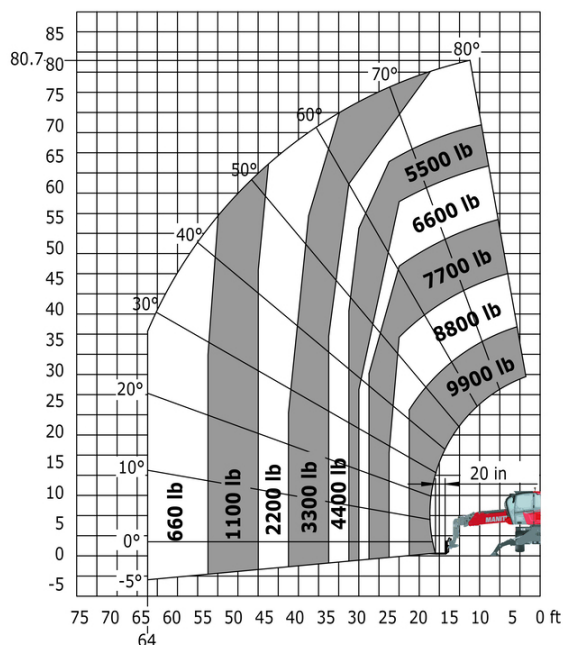
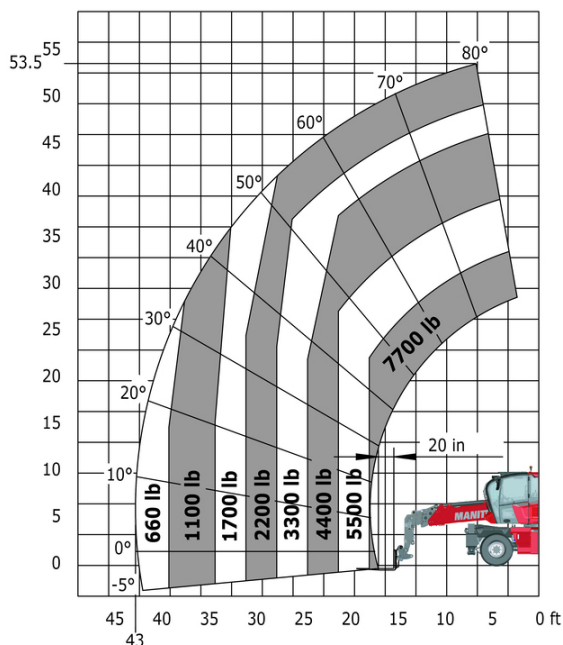


Other data		Imperial
Length of frame	l14	16 ft 4 in
Wheelbase	y	8 ft 11 in
Ground clearance	m4	1 ft 3 in
Counterweight offset (turret at 90°)	a7	9 ft 11 in
Tilt-up angle	a4	10°
Tilt-down angle	a5	107°
Overall length at stabilisers	l12	15 ft 5 in
External turning radius (over tyres)	Wa1	13 ft 8 in
Overall width with stabilisers extended	b7	16 ft 4 in
Overall height	h17	10 ft
Ground clearance under front tires on stabilizers	m5	7 in

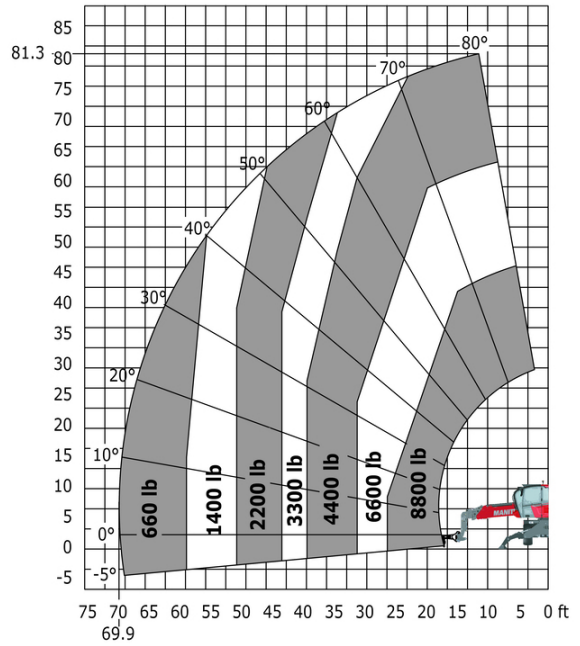
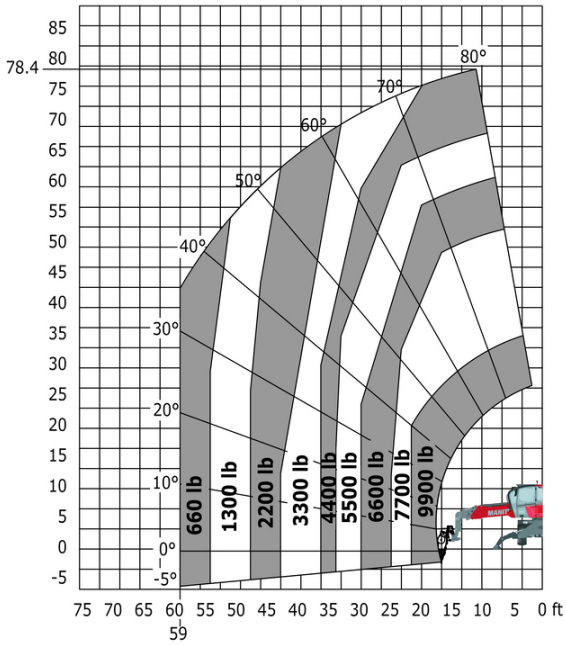
MRT 2545 115 - Load chart

Machine on tires with forks Imperial

Machine on lowered stabilisers with forks Imperial

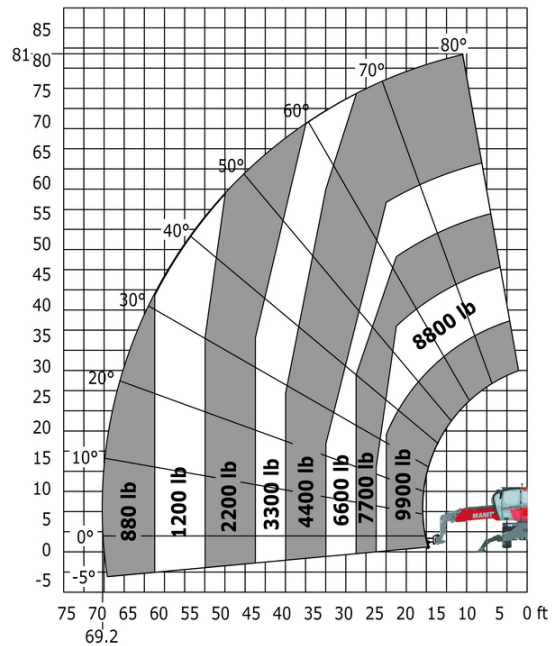
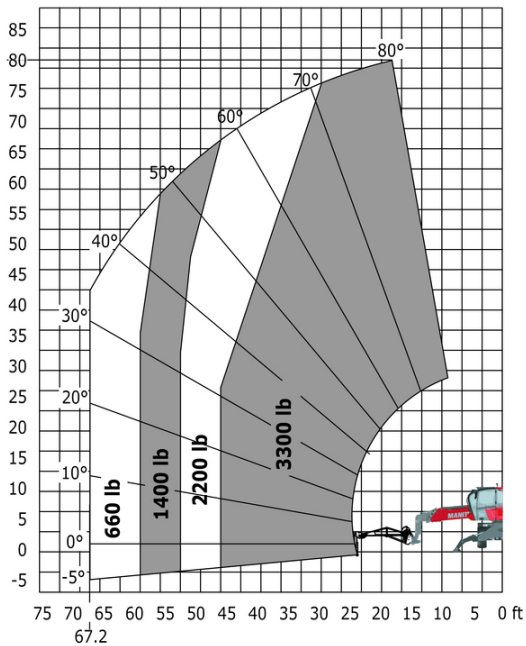


Machine on lowered stabilisers with winch 5000 kg Imperial Machine on lowered stabilisers with 4000 kg jib (Imperial)

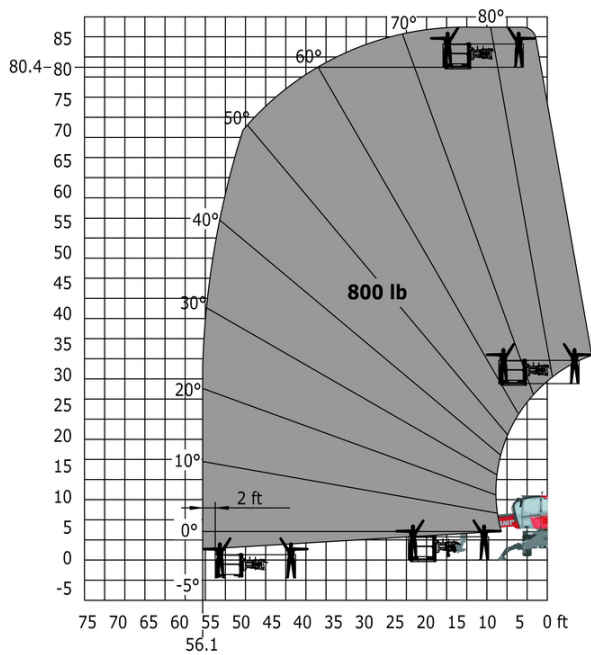


Machine on lowered stabilisers with 1500 kg jib with winch (Imperial)

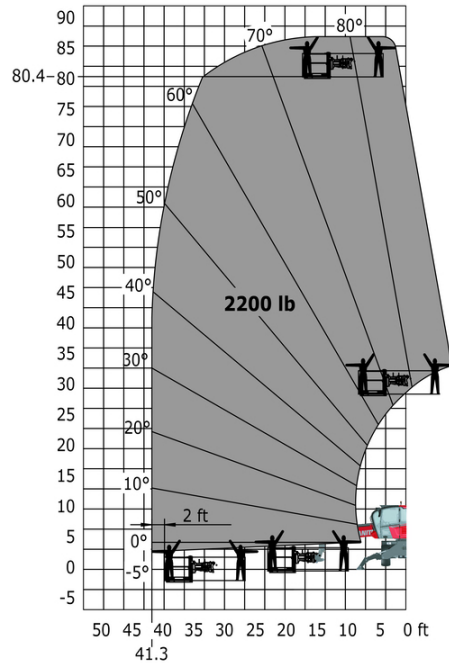
Machine on lowered stabilisers with hook 5000 kg (Imperial)



Machine on lowered stabilisers with 365 kg platform Imperial



Machine on lowered stabilisers with 1000 kg platform Imperial





Head Office

B.P. 249 - 430 rue de l'Aubinière

44150 Ancenis Cedex - France

Tel: +33 (0)2 40 09 10 11 - Fax: +33 (0)2 40 09 10 97

www.manitou.com



This publication provides a description of the configuration versions and options for Manitou products, which may differ for equipment. The equipment presented in this brochure may be part of a series, as an option, or it may not be available, depending on the versions. Manitou reserves the right, at any time and without notice, to amend the specifications described and represented. The specifications provided do not bind the manufacturer. For more details, please contact your Manitou agent. This is not a contractually binding document. The presentation of the products is not contractually binding. List of specifications non-exhaustive. The logos as well as the visual identity of the company are owned by Manitou and cannot be used without authorisation. All rights reserved. The photos and diagrams contained in this brochure are only provided for consultation and information purposes.

MANITOU BF SA - Limited company with board of directors - Share capital: 39,668,399 euros - 857 802 508 RCS Nantes