

Technical sheet :

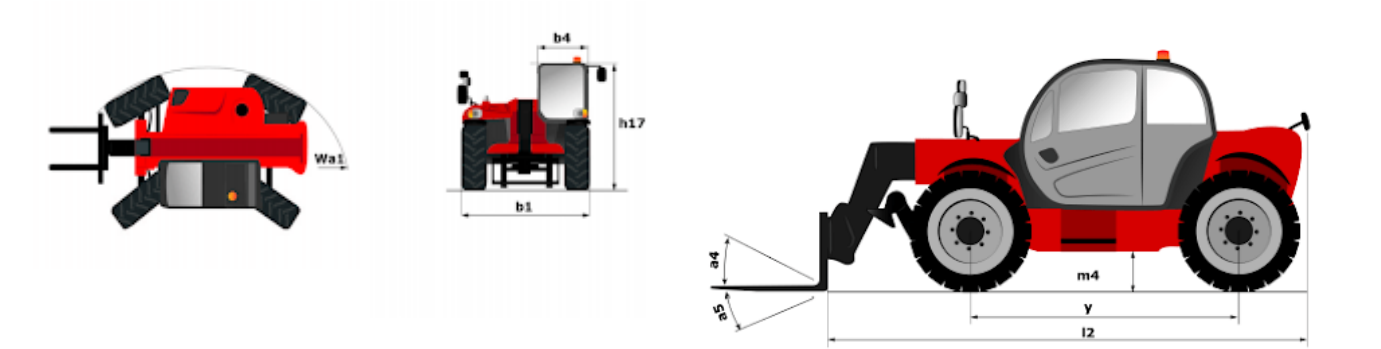
MTA 10055 SERIES IV



 **MANITOU**
HANDLING YOUR WORLD

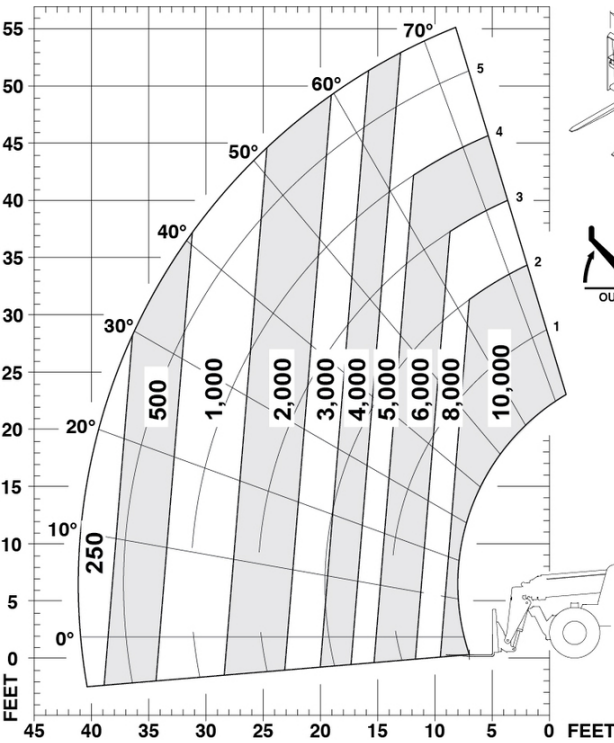
| Capacities | | Imperial |
|---|-----|--|
| Max. capacity | | 10000 lb |
| Max. lifting height | | 55 ft |
| Max. outreach | | 41 ft 2 in |
| Weight and dimensions | | |
| Overall length to carriage | l11 | 21 ft |
| Overall width | b1 | 8 ft 4 in |
| Overall height | h17 | 8 ft 6 in |
| Wheelbase | y | 10 ft 4 in |
| Ground clearance | m4 | 18 in |
| Overall cab width | b4 | 33 in |
| Tilt-up angle | a4 | 12 ° |
| Tilt-down angle | a5 | 112 ° |
| External turning radius | Wa3 | 13 ft 11 in |
| Unladen weight (with forks) | | 27800 lb |
| Standard tires | | 14 x 24 |
| Frame leveling longitudinal +/- | | 10 ° |
| Frame leveling corrector | a9 | 10 ° |
| Performances | | |
| Lifting | | 15 s |
| Lowering | | 10 s |
| Extension | | 15 s |
| Retraction | | 12 s |
| Crowd | | 10 s |
| Dump | | 5 s |
| Engine | | |
| Engine brand | | Deutz |
| Engine norm | | Tier 4 final |
| Engine model | | TCD 3.6 L4 |
| Number of cylinders / Capacity of cylinders | | 4 - 0.23 in³ |
| I.C. Engine power rating - Power | | 119.35 Hp / 89 kW |
| Max. torque / Engine rotation | | 354 ft/lbs @ 1600 rpm |
| Transmission | | |
| Transmission type | | Torque converter with powershift gearbox |
| Number of gears (forward / reverse) | | 4 / 3 |
| Travel speed (laden) | | 20 mph |
| Max. travel speed | | 20 mph |
| Parking brake | | SAHR |
| Service brake | | Wet disc brakes |
| Axle Manufacturer | | Dana |
| Hydraulics | | |
| Hydraulic pump type | | Gear pump |
| Hydraulic flow / Pressure | | 41 US gpm-3002 PSI |
| Tank capacities | | |
| Engine oil | | 4 US gal |
| Hydraulic oil | | 45 US gal |
| Fuel tank | | 47 US gal |
| DEF tank capacity | | 5 US gal |
| Miscellaneous | | |
| Steering wheels (front / rear) | | 2 / 2 |
| Drive wheels (front / rear) | | 2 / 2 |
| Safety cab homologation | | ROPS/FOPS |
| Controls | | Single Joystick FNR |

MTA 10055 Series IV - Dimensional drawing

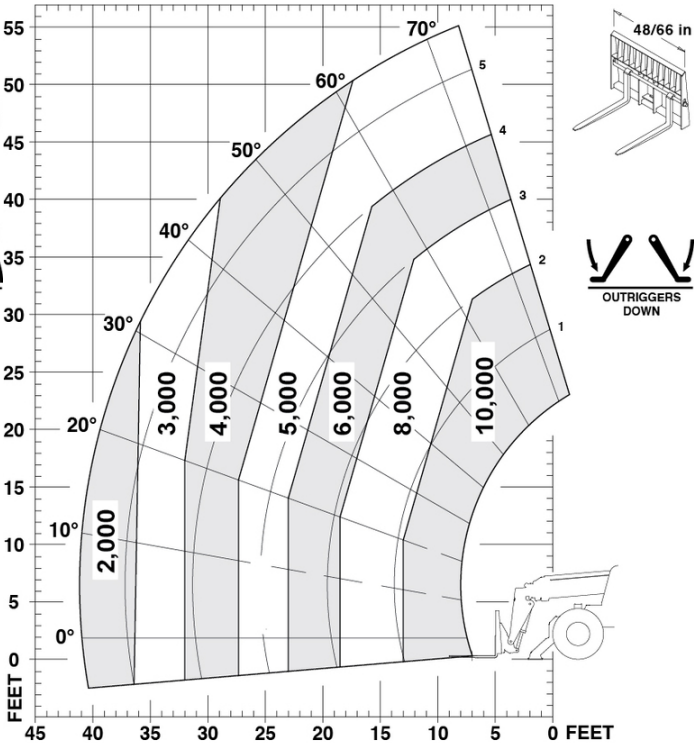


MTA 10055 Series IV - Load chart

Machine on tyres with forks Imperial



Machine on lowered stabilisers with forks Imperial





Head Office

B.P. 249 - 430 rue de l'Aubinière

44150 Ancenis Cedex - France

Tel: +33 (0)2 40 09 10 11 - Fax: +33 (0)2 40 09 10 97

www.manitou.com



This publication provides a description of the configuration versions and options for Manitou products, which may differ for equipment. The equipment presented in this brochure may be part of a series, as an option, or it may not be available, depending on the versions. Manitou reserves the right, at any time and without notice, to amend the specifications described and represented. The specifications provided do not bind the manufacturer. For more details, please contact your Manitou agent. This is not a contractually binding document. The presentation of the products is not contractually binding. List of specifications non-exhaustive. The logos as well as the visual identity of the company are owned by Manitou and cannot be used without authorisation. All rights reserved. The photos and diagrams contained in this brochure are only provided for consultation and information purposes.

MANITOU BF SA - Limited company with board of directors - Share capital: 39,668,399 euros - 857 802 508 RCS Nantes