

Technical sheet :

# **MTA 10055 E74**

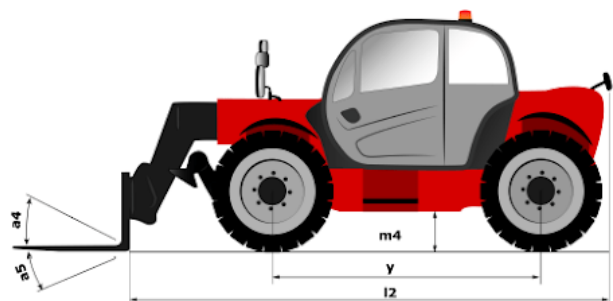
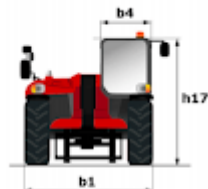
---



 **MANITOU**  
HANDLING YOUR WORLD

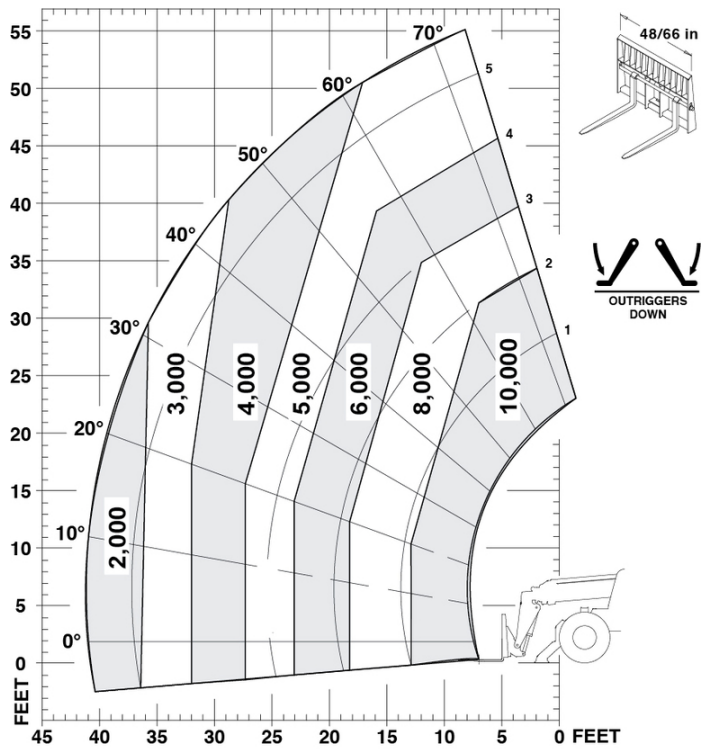
Capacities			Imperial
Max. capacity			10000 lb
Max. lifting height			55 ft 1 in
Maximum outreach			41 ft 2 in
Weight and dimensions			
Overall length to carriage	l11		21 ft
Overall width	b1		8 ft 4 in
Overall height	h17		8 ft 6 in
Wheelbase	y		10 ft 4 in
Ground clearance	m4		18 in
Overall cab width	b4		33 in
Tilt-up angle	a4		12 °
Tilt-down angle	a5		112 °
External turning radius	Wa3		13 ft 11 in
Unladen weight (with forks)			27800 lb
Overall weight			27800 lb
Standard tires			14 x 24
Frame leveling longitudinal +/-			10 °
Frame leveling corrector	a9		10 °
Performances			
Lifting			15 s
Lowering			10 s
Extension			15 s
Retraction			12 s
Crowd			10 s
Dump			5 s
Engine			
Engine brand			Deutz
Engine norm			Stage IV, Tier 4 final
Engine model			TCD 3.6 L4
Engine power (Hp/kW)			73.75 Hp / 55 kW
Max. torque / Engine rotation			288 ft/lbs @ 1300 rpm
Transmission			
Transmission type			Powershift
Number of gears (forward / reverse)			4 / 3
Max. travel speed			15 mph
Parking brake			Hydraulic spring release SAHR
Service brake			Wet disc brakes
Axle Manufacturer			Dana
Hydraulics			
Hydraulic pump type			Gear pump
Hydraulic flow / Pressure			41 US gpm-3002 PSI
Tank capacities			
Engine oil			4 US gal
Hydraulic oil			45 US gal
Fuel			47 US gal
Miscellaneous			
Steering wheels (front / rear)			2 / 2
Drive wheels (front / rear)			2 / 2
Cab certification			ROPS/FOPS
Controls			Single Joystick FNR

## MTA 10055 E74 - Dimensional drawing



## MTA 10055 E74 - Load chart

Machine on lowered stabilisers with forks Imperial





**Head Office**

B.P. 249 - 430 rue de l'Aubinière  
44150 Ancenis Cedex - France

Tel: +33 (0)2 40 09 10 11 - Fax: +33 (0)2 40 09 10 97

[www.manitou.com](http://www.manitou.com)



This publication provides a description of the configuration versions and options for Manitou products, which may differ for equipment. The equipment presented in this brochure may be part of a series, as an option, or it may not be available, depending on the versions. Manitou reserves the right, at any time and without notice, to amend the specifications described and represented. The specifications provided do not bind the manufacturer. For more details, please contact your Manitou agent. This is not a contractually binding document. The presentation of the products is not contractually binding. List of specifications non-exhaustive. The logos as well as the visual identity of the company are owned by Manitou and cannot be used without authorisation. All rights reserved. The photos and diagrams contained in this brochure are only provided for consultation and information purposes.

MANITOU BF SA - Limited company with board of directors - Share capital: 39,668,399 euros - 857 802 508 RCS Nantes