

Technical sheet :

150 AETJ-C



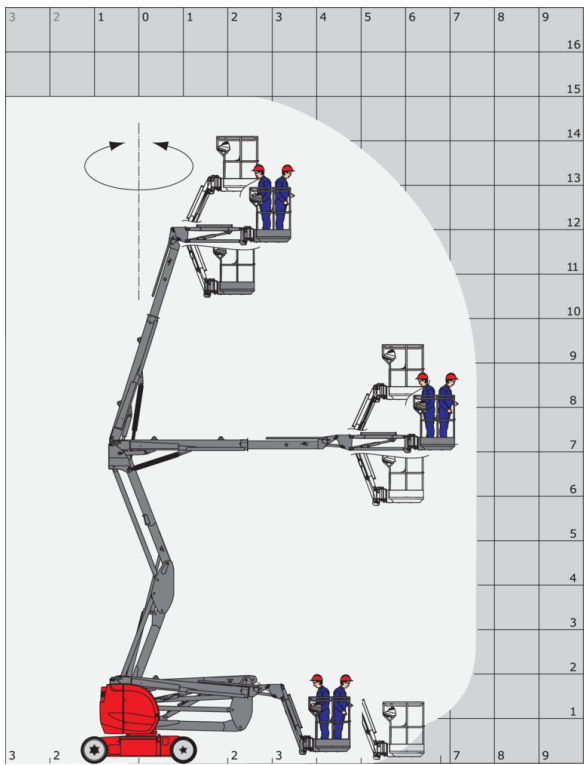
 **MANITOU**
HANDLING YOUR WORLD

| Capacities | | Metric |
|--|---------|--|
| Working height | h21 | 15 m |
| Floor height (access) | h20 | 0.40 m |
| Platform height | h7 | 12.98 m |
| Max. outreach | | 7.60 m |
| Overhang | | 7.07 m |
| Pendular arm rotation (top / bottom) | | +65 ° / -65 ° |
| Platform capacity | Q | 200 kg |
| Turret rotation | | 355 ° |
| Platform rotation (right / left) | | 66 ° / 59 ° |
| Number of people (indoor / outdoor) | | 2 / 2 |
| Weight and dimensions | | |
| Platform weight* | | 6700 kg |
| Platform dimensions (length x width) | lp / ep | 1.20 m x 0.92 m |
| Overall length | l1 | 6.05 m |
| Overall width | b1 | 1.50 m |
| Overall height | h17 | 1.97 m |
| Overall length (stowed) | l9 | 4.40 m |
| Overall height (stowed) | h18 | 2.08 m |
| Jib length | l13 | 1.26 m |
| Counterweight offset (turret at 90°) | a7 | 0.12 m |
| Counterweight Oversize / Reach | | 0.12 m |
| External turning radius | Wa3 | 3.96 m |
| Ground clearance at centre of wheelbase | m2 | 0.14 m |
| Wheelbase | y | 2 m |
| Performances | | |
| Drive speed - stowed | | 5 km/h |
| Drive speed - raised | | 0.60 km/h |
| Gradeability | | 22 % |
| Permissible leveling | | 3 ° |
| Wheels | | |
| Tires type | | Solid non-marking tires |
| Standard tires | | 24 x 7.5 in / 600 x 190 mm |
| Drive wheels (front / rear) | | 0 / 2 |
| Steering wheels (front / rear) | | 2 / 0 |
| Braking wheels (front / rear) | | 0 / 2 |
| Engine/Battery | | |
| Battery nominal voltage / capacity | | 48 V / 240 Ah |
| Battery energy | | 11 kWh |
| Integrated charger / charger | | 48 V / 30 A |
| Miscellaneous | | |
| Number of cycles with STD Battery (HIRD) | | 46 |
| Ground Pressure | | 13.50 dan/cm2 |
| Hydraulic Pressure | | 210 bar |
| Hydraulic tank capacity | | 15 l |
| Noise to environment (LWA) | | < 70 dB |
| Vibration on hands/arms | | < 0.52 m/s² |
| Standards compliance | | |
| This machine is in compliance with: | | European directives: 2006/42/EC- Machinery (revised EN280:2013) - 2004/108/EC (EMC) - 2006/95/EC (Low voltage) |

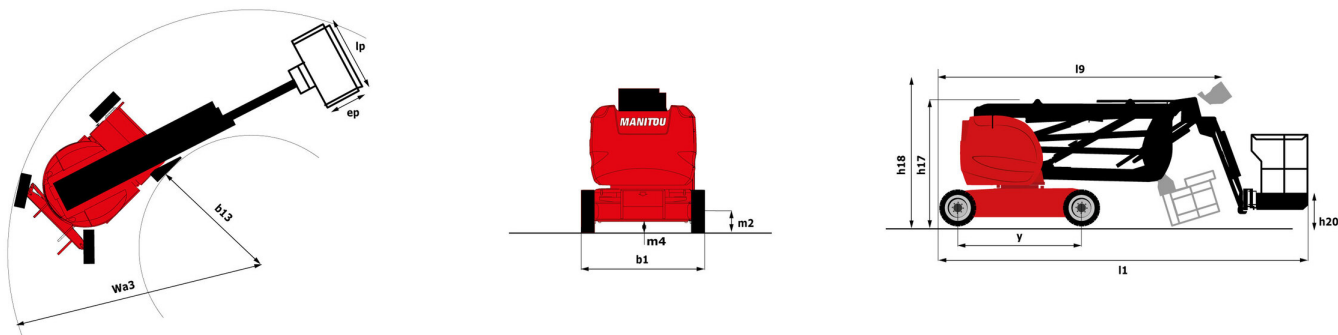
*Varies according to options and standards of the country to which the machine is delivered

150 AETJ-C - Load chart

Load Chart metric



150 AETJ-C - Dimensional drawing



Equipment

| Standard |
|---|
| 230V Predisposition |
| Audible alarm and illuminated indicator lamp (leveling, overload, lowering) |
| Battery charge indicator lamp |
| CAN bus technology |
| Easy Manager |
| Emergency stop button in platform and on frame |
| Hom in the platform |
| Hour meter |
| Integrated diagnostic assistance |
| Manual emergency lowering |
| Multi-voltage integrated charger |
| Negative-type braking on rear wheels |
| Non-marking rubber tyres |
| Pendular arm |
| Platform with open-work floor |
| Proportional controls |
| Slinging and securing rings |
| Tool box in platform |
| Traction battery |
| Travel possible at maximum height |

| Optional |
|--|
| 110 or 230V plug with differential circuit breaker |
| 3D |
| Biodegradable oil |
| Cold weather protection oil |
| Highly capacity battery |
| Lights |
| Maintenance-free battery |
| Personalized paintwork |
| Protective cover for control panel |
| SMS : Safe Man System |
| Safety harness |
| Water predisposition |
| Working headlight in platform |



Head Office

B.P. 249 - 430 rue de l'Aubinière

44150 Ancenis Cedex - France

Tel: +33 (0)2 40 09 10 11 - Fax: +33 (0)2 40 09 10 97

www.manitou.com



This publication provides a description of the configuration versions and options for Manitou products, which may differ for equipment. The equipment presented in this brochure may be part of a series, as an option, or it may not be available, depending on the versions. Manitou reserves the right, at any time and without notice, to amend the specifications described and represented. The specifications provided do not bind the manufacturer. For more details, please contact your Manitou agent. This is not a contractually binding document. The presentation of the products is not contractually binding. List of specifications non-exhaustive. The logos as well as the visual identity of the company are owned by Manitou and cannot be used without authorisation. All rights reserved. The photos and diagrams contained in this brochure are only provided for consultation and information purposes.

MANITOU BF SA - Limited company with board of directors - Share capital: 39,668,399 euros - 857 802 508 RCS Nantes