

Technical sheet :

200 ATJ ST5



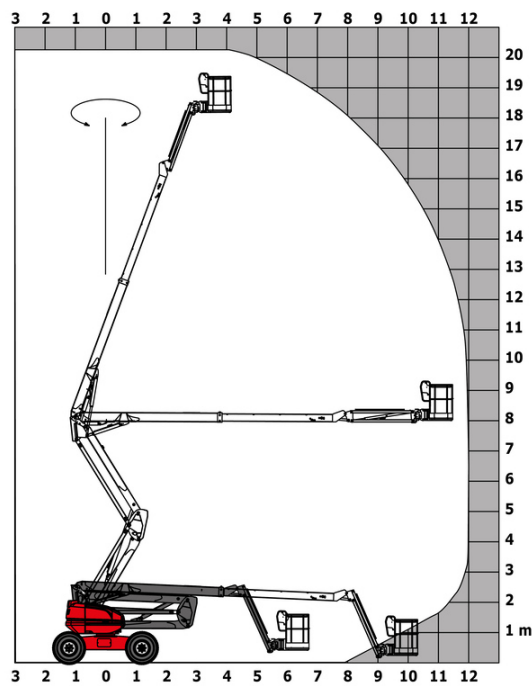
 **MANITOU**
HANDLING YOUR WORLD

| Capacities | | Metric |
|---|---------|--|
| Working height | h21 | 20.35 m |
| Floor height (access) | h20 | 0.50 m |
| Platform height | h7 | 18.35 m |
| Max. outreach | | 11.97 m |
| Overhang | | 7.95 m |
| Pendular arm rotation (top / bottom) | | +69 ° / -66 ° |
| Platform capacity | Q | 230 kg |
| Turret rotation | | 355 ° |
| Platform rotation (right / left) | | 90 ° / 90 ° |
| Number of people (indoor / outdoor) | | 2 / 2 |
| Weight and dimensions | | |
| Platform weight* | | 10050 kg |
| Platform dimensions (length x width) | lp / ep | 2.10 m x 0.76 m |
| Overall length | l1 | 8.43 m |
| Overall width | b1 | 2.40 m |
| Overall height | h17 | 2.70 m |
| Overall length (stowed) | l9 | 6.24 m |
| Overall height (stowed) | h18 | 2.99 m |
| Counterweight offset (turret at 90°) | a7 | 0.11 m |
| Counterweight Oversize / Reach | | 0.11 m |
| External turning radius | Wa3 | 3.90 m |
| Ground clearance at centre of wheelbase | m2 | 0.44 m |
| Wheelbase | y | 2.40 m |
| Performances | | |
| Drive speed - stowed | | 4.70 km/h |
| Drive speed - raised | | 0.80 km/h |
| Gradeability | | 40 % |
| Permissible leveling | | 5 ° |
| Wheels | | |
| Tires type | | Foam-cured tires |
| Standard tires | | 1025 x 365 mm |
| Drive wheels (front / rear) | | 2 / 2 |
| Steering wheels (front / rear) | | 2 / 2 |
| Braking wheels (front / rear) | | 0 / 2 |
| Engine/Battery | | |
| Engine brand / model | | Yanmar - 3TNV88C-KMU |
| Engine norm | | Stage V |
| I.C. Engine power rating / Power | | 34 Hp / 25.50 kW |
| Miscellaneous | | |
| Ground Pressure | | 20.65 dan/cm2 |
| Hydraulic Pressure | | 340 bar |
| Hydraulic oil tank capacity | | 80 l |
| Fuel tank | | 78.50 l |
| Standards compliance | | |
| This machine is in compliance with: | | European directives: 2006/42/EC- Machinery (revised EN280:2013) - 2004/108/EC (EMC) - 2006/95/EC (Low voltage) |

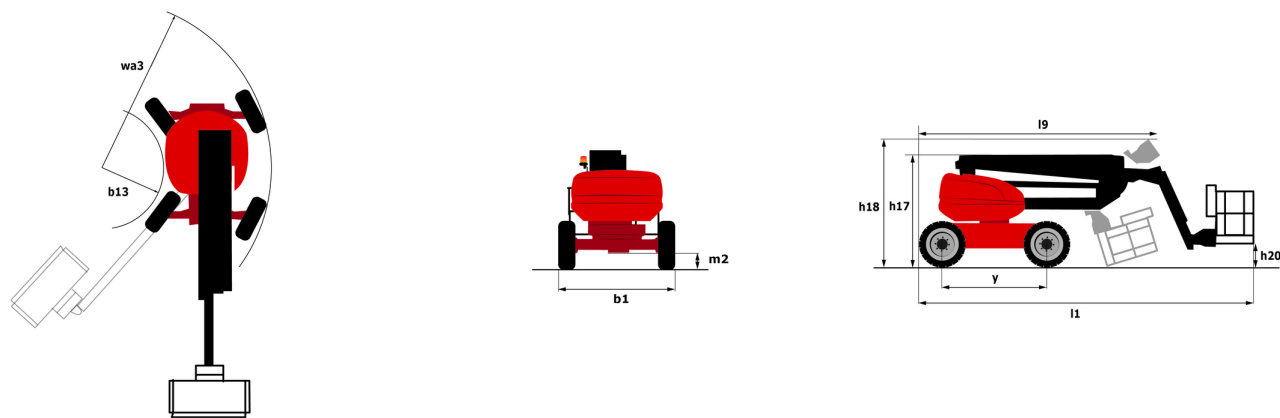
*Varies according to options and standards of the country to which the machine is delivered

200 ATJ ST5 - Load chart

Load Chart metric



200 ATJ ST5 - Dimensional drawing



Equipment

| Standard |
|---|
| 230V Predisposition |
| 4 simultaneous movements |
| 4 wheel drive |
| 4 wheel steer with crab mode |
| Audible alarm and illuminated indicator lamp (leveling, overload, lowering) |
| Backup electrical pump |
| CAN bus technology |
| Dead man pedal |
| Differential locking on rear axle |
| Easy Manager |
| Emergency stop button in platform and on frame |
| Engine with DPF |
| Front axle with limited slip |
| Fuel gauge with low level indicator |
| Galvanized basket 2,100 mm |
| Hour meter |
| LED rotating beacon |
| Large color screen on turret |
| Management via engine speed bearing |
| Oscillating front axle |
| Proportional controls |
| Stop & Go system |

| Optional |
|--|
| 110 or 230V plug with differential circuit breaker |
| Battery cut-off |
| Biodegradable oil |
| Coded anti-start |
| Cold weather protection oil |
| Continuous turret rotation |
| Fuel tank locking cap |
| Galvanized basket 2,100 mm |
| Galvanized basket 2.100 mm / 6'11" with lateral door |
| Highly capacity battery |
| Key lock on turret cover |
| Oil tank locking cap |
| On-board generator (3,5 or 5 kW) |
| Safety kit - Harness + helmet |
| Screen protection on the lower box control |
| Secondary Protection System (SPS) |
| Socket 230 V + differential circuit breaker |
| Water heater |
| Working light |



Head Office

B.P. 249 - 430 rue de l'Aubinière

44150 Ancenis Cedex - France

Tel: +33 (0)2 40 09 10 11 - Fax: +33 (0)2 40 09 10 97

www.manitou.com



This publication provides a description of the configuration versions and options for Manitou products, which may differ for equipment. The equipment presented in this brochure may be part of a series, as an option, or it may not be available, depending on the versions. Manitou reserves the right, at any time and without notice, to amend the specifications described and represented. The specifications provided do not bind the manufacturer. For more details, please contact your Manitou agent. This is not a contractually binding document. The presentation of the products is not contractually binding. List of specifications non-exhaustive. The logos as well as the visual identity of the company are owned by Manitou and cannot be used without authorisation. All rights reserved. The photos and diagrams contained in this brochure are only provided for consultation and information purposes.

MANITOU BF SA - Limited company with board of directors - Share capital: 39,668,399 euros - 857 802 508 RCS Nantes