

Technical sheet :

280 TJ ST5



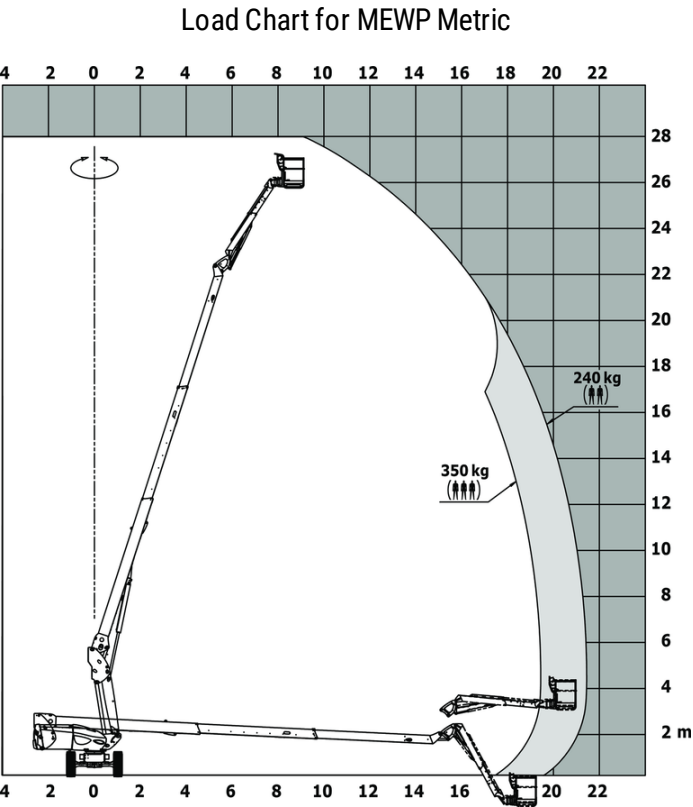
 **MANITOU**
HANDLING YOUR WORLD

| Capacities | | Metric |
|--|---------|--|
| Working height | h21 | 27.73 m |
| Platform height | h7 | 25.73 m |
| Maximum outreach | | 21.45 m |
| Pendular arm rotation (top / bottom) | | +56.80 ° / -62 ° |
| Platform capacity / capacity (maximum) | Q | 240 kg / 350 kg |
| Turret rotation | | 360 ° |
| Platform rotation (right / left) | | 90 ° / 90 ° |
| Number of people (indoor / outdoor) | | 3 / 2 |
| Weight and dimensions | | |
| Platform weight* | | 16500 kg |
| Platform dimensions (length x width) | lp / ep | 2.30 m x 0.90 m |
| Floor height (access) | h20 | 0.40 m |
| Overall length | l1 | 11.36 m |
| Overall width | b1 | 2.48 m |
| Overall height | h17 | 2.73 m |
| Overall length (stowed) | l9 | 8.09 m |
| Overall height (stowed) | h18 *** | 2.71 m |
| Jib length | l13 | 3.80 m |
| Telescopic jib length retracted / extended | | 2800 mm / 4300 mm |
| Counterweight offset (turret at 90°) | a7 | 1.43 m |
| Counterweight Oversize / Reach | | 1.45 m |
| External turning radius | Wa3 | 4.35 m |
| Ground clearance at centre of wheelbase | m2 | 0.41 m |
| Wheelbase | y | 2.80 m |
| Performances | | |
| Drive speed - stowed | | 4.50 km/h |
| Drive speed - raised | | 0.80 km/h |
| Gradeability | | 35 % |
| Permissible leveling | | 4 ° |
| Wheels | | |
| Tires type | | Solid Tires Cured-On |
| Drive wheels (front / rear) | | 2 / 2 |
| Steering wheels (front / rear) | | 2 / 2 |
| Braking wheels (front / rear) | | 2 / 2 |
| Engine/Battery | | |
| Engine brand / model | | Yanmar - 4TNV88C |
| Engine norm | | Stage V |
| I.C. Engine power rating / Power | | 46 Hp / 34.30 kW |
| Miscellaneous | | |
| Ground Pressure | | 21.30 dan/cm2 |
| Hydraulic Pressure | | 400 bar |
| Hydraulic tank capacity | | 94 l |
| Fuel tank | | 76 l |
| Noise to environment (LwA) | | < 106 dB |
| Vibration on hands/arms | | < 0.50 m/s² |
| Standards compliance | | |
| This machine is in compliance with: | | European directives: 2006/42/EC- Machinery (revised EN280:2013) - 2004/108/EC (EMC) - 2006/95/EC (Low voltage) |

*Varies according to options and standards of the country to which the machine is delivered

** According to "REDUCE cycle"

280 TJ ST5 - Load chart



280 TJ ST5 - Dimensional drawing



Equipment

| Standard |
|---|
| 230V Predisposition |
| 4 simultaneous movements |
| 4 wheel drive |
| 4 wheel steer with crab mode |
| Audible alarm and illuminated indicator lamp (leveling, overload, lowering) |
| Backup electrical pump |
| CAN bus technology |
| Connected machine |
| Continuous turret rotation |
| Dead man pedal |
| Differential locking on rear axle |
| Emergency stop button in platform and on frame |
| Engine on swivel chair |
| Engine with DPF (Diesel Particulate Filter) |
| Front axle with limited slip |
| Fuel gauge with low level indicator |
| Heavy-duty painted basket 2.30 m |
| Hom in the platform |
| Hour meter |
| LED rotating beacon |
| Large basket with three entries |
| Oscillating front axle |
| Remote control for transport |
| Stop & Go system |
| Telescopic jib |
| Turret orientation information |
| X Y function |

| Optional |
|--|
| Additional storage boxes |
| Battery blanket |
| Battery cut-off |
| Biodegradable hydraulic oil - Grade 32 |
| Cold weather protection oil |
| Easy link with remote lock |
| Engine Block Heater |
| High capacity starting battery |
| Hydraulic oil heater |
| Large basket 2.30m with lateral door |
| Lockable fuel cap |
| Non marking solid tyres |
| On-board generator (3,5 or 5 kW) |
| Painted narrow basket for heavy loads 1800mm (5 ft 11 in.) |
| Panel cradle |
| Personalized paintwork |
| Pipe cradle |
| Safety kit - Harness + helmet |
| Safety valve |
| Screen protection on the lower box control |
| Secondary Protection System (SPS) |
| Socket 230 V + differential circuit breaker |
| Spark arrester |
| Working light |



Head Office

B.P. 249 - 430 rue de l'Aubinière

44150 Ancenis Cedex - France

Tel: +33 (0)2 40 09 10 11 - Fax: +33 (0)2 40 09 10 97

www.manitou.com



This publication provides a description of the configuration versions and options for Manitou products, which may differ for equipment. The equipment presented in this brochure may be part of a series, as an option, or it may not be available, depending on the versions. Manitou reserves the right, at any time and without notice, to amend the specifications described and represented. The specifications provided do not bind the manufacturer. For more details, please contact your Manitou agent. This is not a contractually binding document. The presentation of the products is not contractually binding. List of specifications non-exhaustive. The logos as well as the visual identity of the company are owned by Manitou and cannot be used without authorisation. All rights reserved. The photos and diagrams contained in this brochure are only provided for consultation and information purposes.

MANITOU BF SA - Limited company with board of directors - Share capital: 39,668,399 euros - 857 802 508 RCS Nantes