

Ficha técnica :

MAN'GO 12



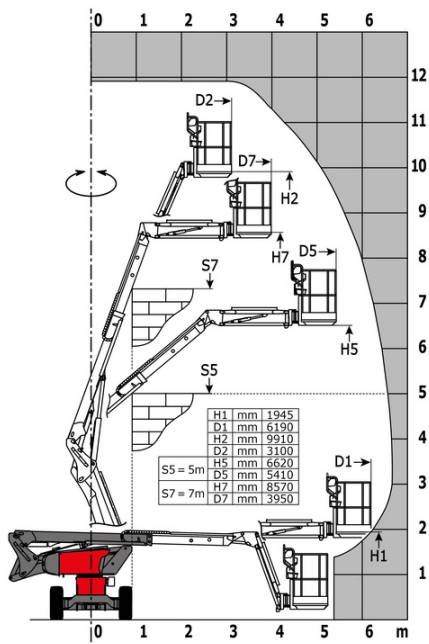
| Capacities | | Métrico |
|---|---------|-------------------------|
| Working height | h21 | 11.91 m |
| Platform height | h7 | 9.90 m |
| Max. outreach | | 6.19 m |
| Overhang | | 4.80 m |
| Pendular arm rotation (top / bottom) | | +64 ° / -70 ° |
| Platform capacity | Q | 230 kg |
| Turret rotation | | 350 ° |
| Platform rotation (right / left) | | 70 ° / 66 ° |
| Number of people (indoor / outdoor) | | 2 / 2 |
| Weight and dimensions | | |
| Platform weight* | | 4150 kg |
| Platform dimensions (length x width) | lp / ep | 1.50 m x 0.98 m |
| Floor height (access) | h20 | 0.39 m |
| Overall length | l1 | 5.50 m |
| Overall width | b1 | 1.80 m |
| Overall height | h17 | 2.02 m |
| Overall length (stowed) | l9 | 4.50 m |
| Overall height (stowed) | h18 *** | 2.49 m |
| Jib length | l13 | 1.46 m |
| Counterweight offset (turret at 90°) | a7 | 0.19 m |
| Internal turning radius / External turning radius | Wa3 | 1.71 m/4.11 m |
| Ground clearance at centre of wheelbase | m2 | 0.32 m |
| Wheelbase | y | 2 m |
| Performances | | |
| Drive speed - stowed | | 5.20 km/h |
| Drive speed - raised | | 1 km/h |
| Gradeability | | 45 % |
| Permissible leveling | | 4 ° |
| Wheels | | |
| Tires type | | Solid Tires Cured-On |
| Standard tires | | 720 x 240 mm |
| Drive wheels (front / rear) | | 2 / 2 |
| Steering wheels (front / rear) | | 2 / 0 |
| Braking wheels (front / rear) | | 2 / 2 |
| Engine/Battery | | |
| Engine brand / model | | Kubota - D1105-E4B |
| Engine norm | | Stage V |
| I.C. Engine power rating / Power | | 24.80 Hp / 18.50 kW |
| Miscellaneous | | |
| Ground Pressure | | 15 dan/cm2 |
| Hydraulic Pressure | | 400 bar |
| Hydraulic tank capacity | | 60 l |
| Fuel tank | | 53 l |
| Noise to environment (LwA) | | < 100 dB |
| Vibration on hands/arms | | < 0.76 m/s ² |
| Daily consumption ** | | 4.41 l |

*Varies according to options and standards of the country to which the machine is delivered

** According to "REDUCE cycle"

MAN'GO 12 - Diagramas de carga

Load Chart for MEWP Metric



Equipamiento

Estándar

3 Simultaneous movements
Audible alarm and illuminated indicator lamp (leveling, overload, lowering)
Basket 1,500 mm
CAN bus technology
Dead man pedal
Differential locking
Easy Manager
Emergency stop button in platform and on frame
Fuel gauge with low level indicator
Hom in the platform
Hour meter
Leveling unlocking
Management via engine speed bearing
Manual emergency lowering
Pendular arm
Proportional controls
Protective cover for control panel
Quick access to components
Simplified lift control system
Stop & Go system

Opcional

110 or 230V plug with differential circuit breaker
Audio warning on all motion
Battery cut-off
Biodegradable oil
Catalytic cleaner
Coded anti-start
Cold weather protection oil
High capacity starting battery
Initial verification report before putting into service
Key lock on turret cover
Lockable fuel cap
Non-marking tyres
On-board generator (3,5 or 5 kW)
SMS : Safe Man System
Safety harness
Screen protection on the lower box control
Spark arrester
Water heater
Water predisposition
Working light



Oficina Central

B.P. 249 - 430 rue de l'Aubinière

44150 Ancenis Cedex - Francia

Tel.: 00 33 (0)2 40 09 10 11 - Fax: 00 33 (0)2 40 09 10 97

www.manitou.com



Esta publicación describe las versiones y posibilidades de configuración de los productos Manitou que puedan diferir en equipamiento. Los equipamientos presentados en este folleto pueden ser de serie, opcionales o no estar disponibles en algunas versiones. Manitou se reserva el derecho, en cualquier momento y sin previo aviso, de modificar las especificaciones descritas y representadas. Las especificaciones aportadas no comprometen al fabricante. Para más información, póngase en contacto con su concesionario Manitou. Documento no contractual. Presentación de los productos no contractual. Lista de especificaciones no exhaustiva. Los logos y la identidad visual de la empresa son propiedad de Manitou y no pueden ser utilizados sin autorización. Todos los derechos reservados. Las fotos y los esquemas contenidos en este folleto se ofrecen para consulta y a título indicativo solamente.

Manitou BF SA - Sociedad anónima con Consejo de Administración - Capital social: 39 668 399 euros - 857 802 508 RCS Nantes