

Technical sheet :

# MAN'GO 33



 **MANITOU**  
HANDLING YOUR WORLD

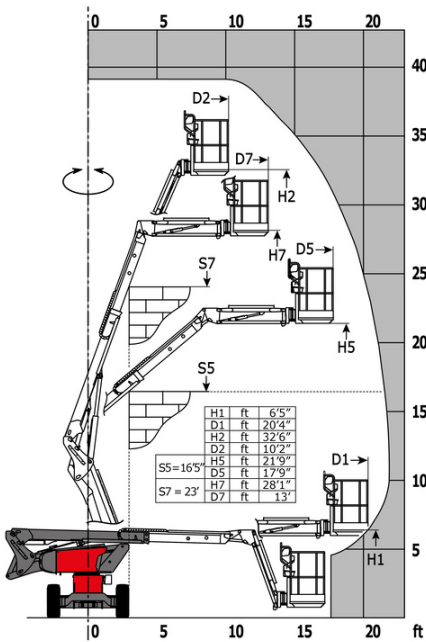
Capacities		Imperial
Working height	h21	38 ft 5 in
Platform height	h7	32 ft 6 in
Maximum outreach		21 ft 11 in
Overhang		15 ft 9 in
Pendular arm rotation (top / bottom)		+64 ° / -70 °
Platform capacity	Q	500 lb
Turret rotation		350 °
Platform rotation (right / left)		70 ° / 66 °
Number of people (indoor / outdoor)		2 / 2
Weight and dimensions		
Platform weight*		9149 lb
Platform dimensions (length x width)	lp / ep	4 ft 11 in x 3 ft 3 in
Floor height (access)	h20	1 ft 4 in
Overall length	l1	18 ft 1 in
Overall width	b1	5 ft 11 in
Overall height	h17	6 ft 7 in
Overall length (stowed)	l9	14 ft 9 in
Overall height (stowed)	h18 ***	8 ft 2 in
Jib length	l13	4 ft 9 in
Counterweight Oversize / Reach		7 in
External turning radius	Wa3	13 ft 6 in
Ground clearance at centre of wheelbase	m2	1 ft 1 in
Wheelbase	y	6 ft 7 in
Performances		
Drive speed - stowed		3 mph
Drive speed - raised		0.62 mph
Gradeability		45 %
Permissible leveling		4 °
Wheels		
Tires type		Super Elastic Solid Cushion
Standard tires		28 x 10 in / 720 x 240 mm
Drive wheels (front / rear)		2 / 2
Steering wheels (front / rear)		2 / 0
Braking wheels (front / rear)		2 / 2
Engine/Battery		
Engine brand / model		Kubota - D1105-E4B
Engine norm		Interim Tier 4, Stage IIIA, Stage V
I.C. Engine power rating / Power		24.80 Hp / 18.50 kW
Miscellaneous		
Hydraulic Pressure		5802 PSI
Hydraulic tank capacity		16 US gal
Fuel tank		14 US gal
Vibration on hands/arms		< 0.76 m/s²
Daily consumption **		1 US gal
Standards compliance		
This machine is in compliance with:		ANSI A92.20-2018 CSA B354.6 ICES-002-Issue 6 Standard Canadian EMC

\*Varies according to options and standards of the country to which the machine is delivered

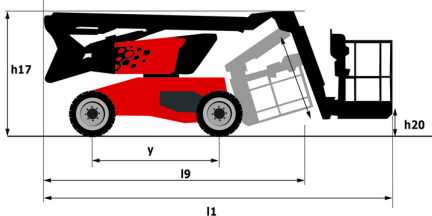
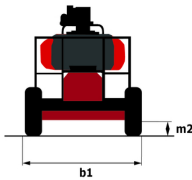
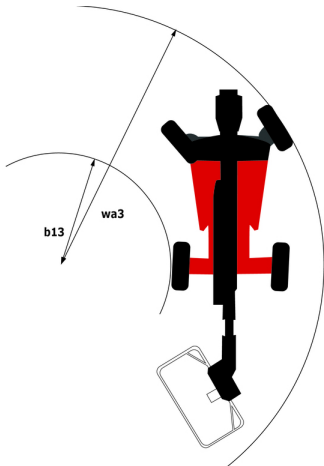
\*\* According to "REDUCE cycle"

MAN'GO 33 - Load chart

Load Chart for MEWP (Imperial)



MAN'GO 33 - Dimensional drawing



# Equipment

Standard
110 V American plug with differential circuit breaker
3 Simultaneous movements
Audible alarm and illuminated indicator lamp (leveling, overload, lowering)
Basket 1,500 mm
Battery cut-off
CAN bus technology
Dead man pedal
Differential locking
Easy Manager
Emergency stop button in platform and on frame
Fuel gauge with low level indicator
Hom in the platform
Hour meter
Integrated diagnostic assistance
Key lock on fuel tank
Leveling unlocking
Lift and drive
Management via engine speed bearing
Manual emergency lowering
Pendular arm
Proportional controls
Protective cover for control panel
Quick access to components
Simplified lift control system
Stop & Go system
Water heater

Optional
110 or 230V plug with differential circuit breaker
Battery blanket
Battery cut-off
Biodegradable oil
Cold weather protection oil
Engine compartment with key lock
Fan grille
High capacity starting battery
Hydraulic oil heater
Initial verification report before putting into service
Lockable fuel cap
Non-marking tyres
On-board generator (3,7 kW)
Screen protection on the lower box control
Secondary Protection System (SPS)
Sieve for fuel tank
Water predisposition
Working headlight in platform



**Head Office**

B.P. 249 - 430 rue de l'Aubinière

44150 Ancenis Cedex - France

Tel: +33 (0)2 40 09 10 11 - Fax: +33 (0)2 40 09 10 97

[www.manitou.com](http://www.manitou.com)



This publication provides a description of the configuration versions and options for Manitou products, which may differ for equipment. The equipment presented in this brochure may be part of a series, as an option, or it may not be available, depending on the versions. Manitou reserves the right, at any time and without notice, to amend the specifications described and represented. The specifications provided do not bind the manufacturer. For more details, please contact your Manitou agent. This is not a contractually binding document. The presentation of the products is not contractually binding. List of specifications non-exhaustive. The logos as well as the visual identity of the company are owned by Manitou and cannot be used without authorisation. All rights reserved. The photos and diagrams contained in this brochure are only provided for consultation and information purposes.

MANITOU BF SA - Limited company with board of directors - Share capital: 39,668,399 euros - 857 802 508 RCS Nantes